

## What can I deposit?

UAL Research Online currently contains **journal articles, monographs, book chapters, reports, conference papers, conference proceedings, exhibitions, video, audio, images, websites**. It is also able to manage **software, datasets, workshop presentations, and patents**. It does not hold student work, with the exception of approved PhD theses.

## File formats

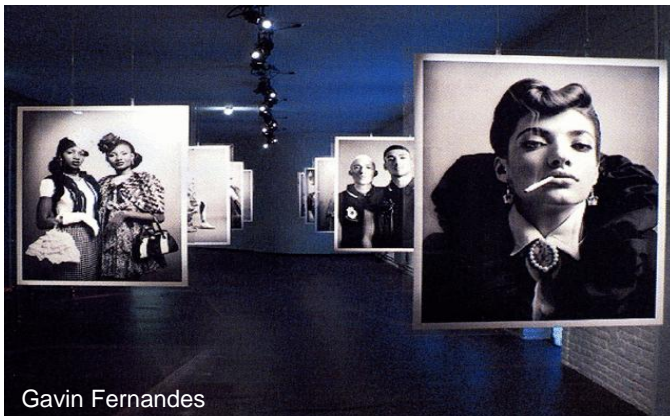
**Text:** pdf, word, txt, plain script, postscript

**Images:** jpeg, png, bmp, tiff, gif, photo shop, pdf

**Audio:** mp3, mpeg, wav, ac3, ogg

**Video:** Mov, mpeg, quick time, flash, avi, theora/ogg

**Websites:** we can archive most websites as long as all the files are available and contained within the home website



Gavin Fernandes

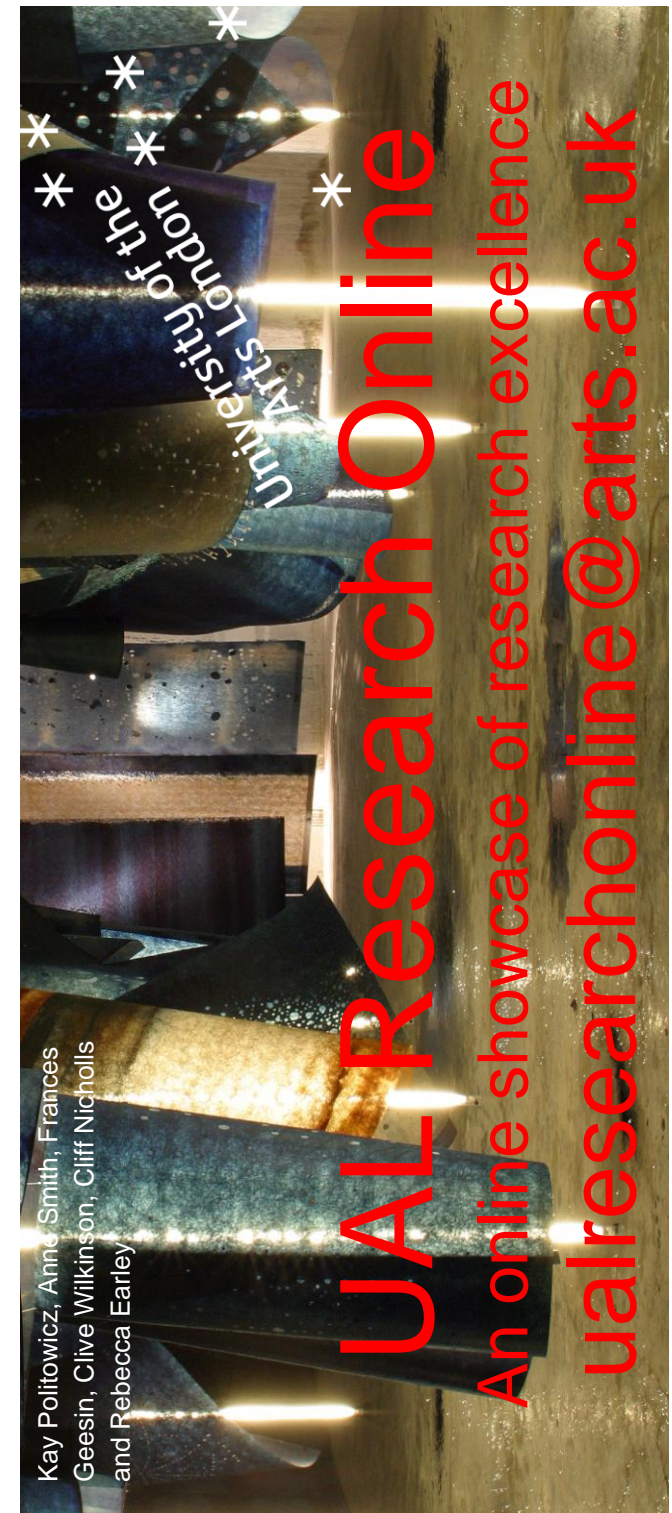


If you would like to submit your work to Research Online you can do so by logging in using your Staff username and password at <http://ualresearchonline.arts.ac.uk>

More information about how to deposit including a short video outlining the process can also be found at the Researchers section on the UAL Research Online website.

UAL Research Online can also be contacted directly at [ualresearchonline@arts.ac.uk](mailto:ualresearchonline@arts.ac.uk) or by telephone (0)207 514 6935.

University of the  
Arts London





## University of the Arts London

University of the Arts London is a vibrant world centre for innovation in arts, design, fashion, communication, and performing arts. Located within, and contributing to, one of the world's most exciting cultural capitals, the University is a unique creative community that draws together six distinctive and distinguished Colleges.

Proudly associated with some of the most original thinkers and practitioners in the arts, the University continues to innovate, challenge convention, and nurture exceptional talents.

One of our goals is to sustain and develop a world-class research culture that supports and informs the university's academic profile. As a leader in the arts and design sector, we aim to clearly articulate the practice-based nature of much of our research, and in doing so to demonstrate the importance of the creative arts to scholarly research.



Design Against Crime

## A different kind of scholarly repository...

UAL Research Online is the online collection of research outputs created by the University of the Arts London's staff and students. Items in the collection are freely and globally available, with no passwords or subscriptions required for viewing and downloading.

Institutional repositories are now widely accepted elements of research institutions and their libraries. Unlike traditional repositories, however, UAL Research Online has been designed to hold, describe and present the unique types of research produced by a specialist creative arts and design university.

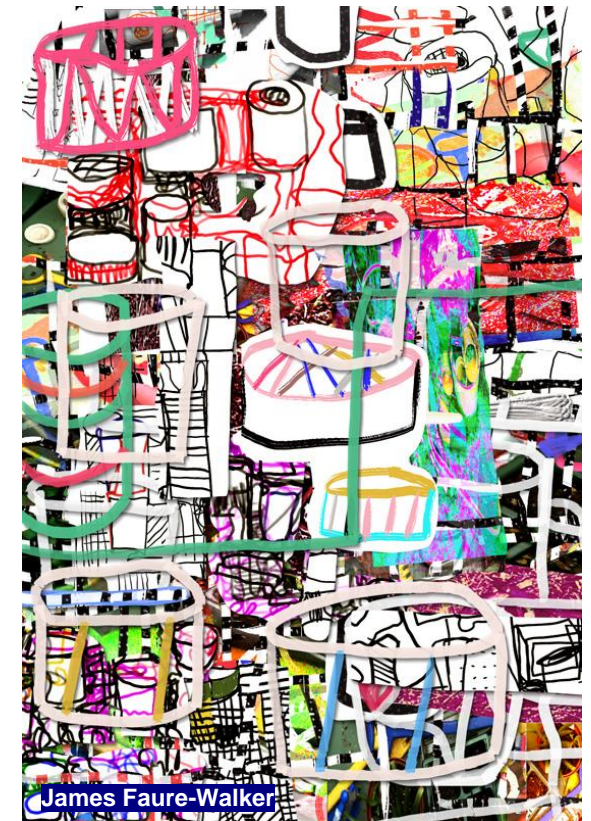


Graham Diprose

## ...designed for a different kind of scholarly research.

While maintaining the functionality, cross-searchability, and robustness of the EPrints repository software, UAL Research Online displays its collections visually, cycling gracefully through the diverse works in our collection.

Textual descriptions accompany each item, and are indexed and searchable, but are not foregrounded as the user explores the collection. The emphasis is always on visual presentation.



James Faure-Walker