

**Charlotte Hodes: Women and Pattern**

**The Bowes Museum, 13 October 2018 - 24 February 2019**

**Hard copy magazines:**

Ceramic Review, Editor's Choice, CR 294 Nov Dec 2018 p.2

Crafts magazine, Issue 275 November/December 2018

Ceramic Monthly, Exposure, February 2019 Issue

Decorative Arts Society Newsletter, No. 115 Spring 2019

Printmaking Today, Winter 2018 Volume 27 Issue 108

**Weblinks:**

<https://www.artfund.org/whats-on/exhibitions/2018/10/13/charlotte-hodes-women-and-pattern-exhibition>

<https://www.thisisdurham.com/whats-on/the-bowes-museum-charlotte-hodes-women-and-pattern-p964841>

<http://whatsoninthenortheast.co.uk/arts-and-museums/charlotte-hodes-women-and-pattern/82258&displayVersion=full>

[https://www.yorkpress.co.uk/events/Yorkshire/1319499.Charlotte\\_Hodes\\_\\_Women\\_and\\_Pattern/](https://www.yorkpress.co.uk/events/Yorkshire/1319499.Charlotte_Hodes__Women_and_Pattern/)

<https://www.familiesonline.co.uk/local/durham/whats-on/charlotte-hodes-women-and-pattern-161056>

<https://www.artrabbit.com/events/charlotte-hodes-women-and-pattern-the-bowes-museum>

<http://blogs.arts.ac.uk/fashion/2018/10/09/women-pattern-exhibition-opens-bowes-museum-curated-lcfs-charlotte-hodes/>

<http://www.thecrackmagazine.com/view-editorial/5970>

[https://www.tripadvisor.co.uk/ShowUserReviews-g190814-d260745-r632604071-The\\_Bowes\\_Museum-Barnard\\_Castle\\_County\\_Durham\\_England.html](https://www.tripadvisor.co.uk/ShowUserReviews-g190814-d260745-r632604071-The_Bowes_Museum-Barnard_Castle_County_Durham_England.html)

Text for Ceramic Monthly online posting:

"Originally published in February 2019 issue of Ceramics Monthly, pages (page 14). <http://www.ceramicsmonthly.org> . Copyright, The American Ceramic Society. Reprinted with permission."

## Teabowl celebration

Thirty-five makers from across the globe come together for *Chawan*, a celebration of the ceremonial teabowl. The exhibition at Stratford-upon-Avon's Stratford Gallery offers a spectrum of interpretations of the iconic form. Japanese potters are well represented and include Rizu Takahashi and Masahiro Fujita, alongside US makers such as Jeff Shapiro, Chris Gustin and Mitch Iburg, while the UK's contribution comes from Lisa Hammond, Margaret Curtis (pictured below), Eddie Curtis, Jack Doherty and more. 17 November–5 December; thestratfordgallery.co.uk



## Picture perfect

Charlotte Hodes' *Women and Pattern* fills the refurbished ceramics galleries at the Bowes Museum, County Durham, with work spanning the last decade of her making – from intricate papercut works, to ceramic vessels and tableware. Hodes' china is treated like a canvas for complex surfaces of hand-cut transfers. Through these works, Hodes aims to explore the relationship between pictures and patterns, and the representation of women in society. These contemporary pieces are placed among items from the museum's permanent collection, creating what Hodes calls 'a dynamic narrative between the historic and my own practice.' Until 24 February 2019; thebowesmuseum.org.uk

## DIARY DATES

### Flora

Joint exhibition of ceramics by Walter Keeler and paintings by Dorota Jurczak at Corvi-Mora, London. Until 3 November; corvi-mora.com

### Portmeirion: Pottery Trendsetter

Exhibition of pottery designs by popular Stoke-on-Trent factory Portmeirion at the Victoria and Albert Museum, London. Until 28 July 2019; vam.ac.uk

### Jennifer Lee

Solo exhibition by last issue's cover star, Scottish potter Jennifer Lee, at Kyoto's Sokyō Gallery. 3 November–8 December; gallery-sokyo.jp

### Forces de la Nature

Work by Norwegian ceramic artists Kari Dyrdal, Torbjørn Kvasbø and Marit Tingleff at the Musée National de Céramique in Sèvres, France. Until 1 April 2019; sevrescitceramique.fr

### Colin Orchard and Tanya Gomez

Paintings by Colin Orchard and porcelain by Tanya Gomez at The New Craftsman Gallery in St Ives, Cornwall. Until 17 November; newcraftsmanstives.com

### Corps-A-Corps

Solo show of ceramic sculpture by artist Elaine Wilson at Arthouse1, London. 9–30 November; arthouse1.co.uk

## Finding harmony

This autumn, London's Flow Gallery is presenting *Beyond Form*, a collaboration between painter Alessandra Taccia and ceramist Mizuyo Yamashita. Each has created serene, neutral-toned work that complements the other. Taccia, whose still lifes of domestic pottery are reminiscent of paintings by Ben Nicholson, describes her goal as 'achieving simpleness and simplicity in all I do', while Yamashita aims to find *wa* – the Japanese concept of balance – in her clean, minimal versions of traditional functional wares. Until 12 January; flowgallery.co.uk



April, was inspired by men's abuse of power, revenge, and features graphic works, *You're Not Thinking This Sculpture's* based on the Salome story (the Carly Simon song), a cast and hand-built platter with gold tears in his eyes. 'It felt political, we are afraid of saying, when, I'm pissed at the you get, at your t you get to walk down but even thinking who's after it felt empowering her – in subsequent capitulated head becomes suckling pig. terms of concept and something that Mendick 'I pour on glaze and they've gone through ous time in the kiln.' ering of control is he artist has embraced exhibiting at the which includes ects found around her Compare the Meerkat' (veau frog) made in th her family. 'The idea er we could sit around argue,' she says. ss of firing, with all

**Right: Charlotte Hodes, *History of Vessels #12*, 2014, height 58cm, in *Women and Pattern* at the Bowes Museum**

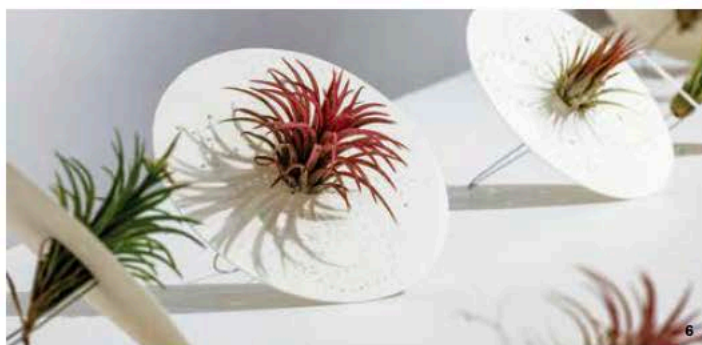
## Around the UK



### **Charlotte Hodes: *Women and Pattern***

The ceramist presents vessels and tableware that explore the female form by building up decorative surfaces using paper cuts, drawing and collage. Until 24 February 2019. The Bowes Museum, Barnard Castle, DL12 8NP. [thebowesmuseum.org.uk](http://thebowesmuseum.org.uk)





1 Charlotte Hodes' *After the Taking of Tea*; coffee pieces, varying dimensions, hand-cut enamel transfer on china, 2018. Photo: The Bowes Museum. 2 Charlotte Hodes' *Dressed in Pattern*; Linear Landscape, 13% in. (35 cm) in length, hand-cut enamel transfer on china, 2016. Photo: Peter Abrahams. "Charlotte Hodes: Women and Pattern," at The Bowes Museum ([www.thebowesmuseum.org.uk](http://www.thebowesmuseum.org.uk)) in Durham, UK, through February 10. 3 Ane-Katrine von Bülow's triangular floor pots, 24% in. (62 cm) in height, glazed stoneware, slab technique, silk-screen decoration, philodendron xanadu, 2014-18. 4 Vibeke Krog's untitled, to 17% in. (45 cm) in length, red stoneware, painted and stamped with slip, clancioe, thyrsliflora, 2017-18. 5 Mette Marie Ørsted's *Nature Climbing*, 9% in. (25 cm) in height per module, unglazed red clay, plant boxes, ivy, 2018. 6 Pia Baastrup's *Portraits*, porcelain, metal frames, tillandsia, 2017. 3-6 Photos: Ole Akhøj, "The Living Pot," at CLAY Museum of Ceramic Art Denmark (<http://claymuseum.dk>) in Middelfart, Denmark, through March 31.

## Exhibitions

### LONDON

#### Design Museum

##### *Home Futures*

To 24 March 2019

Challenging exhibition on our domestic landscapes.

#### Fashion and Textile Museum

##### *Swinging London: A Lifestyle Revolution / Terence Conran – Mary Quant*

8 February – 2 June 2019

The style and importance of this transformative period spanning 1952–77.

#### Kelmscott House, Hammer-smith

##### *Drawing with Light: Photographs from the William Morris Society Collection*

To 28 February 2019

Images of Morris & Co. as well as unseen photographs of Morris and his family.

#### Tate Britain

##### *Edward Burne-Jones*

To 24 February 2019

Major works including stained glass and tapestries.



Anni Albers, detail of wall-hanging, 1926. (Photo courtesy Tate)

#### Tate Modern

##### *Anni Albers*

To 27 January 2019

Influential textile artist blurring traditional boundaries between craft and art.

#### Two Temple Place

##### *John Ruskin: The Power of Seeing*

26 January – 22 April 2019

Celebrating the legacy and enduring relevance of Ruskin's ideas and vision.

#### V&A

##### *Videogames: Design/Play/Disrupt*

To 24 February 2019

Design process behind videogames.



Dior écarlate afternoon dress, Autumn-Winter 1955, V&A, London. (Photo © Laziz Hamani)

##### *Christian Dior*

2 February – 14 July 2019

Exploring one of the 20th century's most influential couturiers.

#### William Morris Gallery

##### *The Enchanted Garden*

To 27 January 2019

The inspiration of gardens for Morris and subsequent artists and designers.

### OUTSIDE LONDON

#### Bowes Museum

##### *Charlotte Hodes: Women and Pattern*



Charlotte Hodes, Petal Bowl, earthenware, 2012. (Photo The Bowes Museum)

To 24 February 2019

Examining the pictorial and pattern, and the representation of women.

#### Sainsbury Centre, Norwich

##### *Elisabeth Frink: Humans and Other Animals*

To 24 February 2019

Over 150 works by the artist, the largest showing of Frink's work in 25 years.

#### V&A Dundee

##### *Ocean Liners: Speed and Style*

To 24 February

The design and cultural impact of liners.

#### The Whitworth, University of Manchester

##### *Alice Kettle: Thread Bearing Witness*

To 24 February 2019

Series of large textiles considering cultural heritage and refugee displacement.

### OVERSEAS

#### MAK Vienna

##### *Koloman Moser. Universal Artist between Gustav Klimt and Josef Hoffmann*

To 22 April 2019

Showcasing Moser's wide-ranging oeuvre.





*After the Taking of Tea* (2018) Charlotte Hodes, hand cut transfer on china, #25 Tassel Dress, 31 cm diameter, courtesy of The Bowes Museum

exhibition will provide a comprehensive overview of Blake's achievements and ambitions across a range of media.  
Until 2 Feb 2019

## Exhibitions ENGLAND

ALFRED EAST GALLERY: KETTERING  
MUSEUM AND ART GALLERY  
NN16 0AN

[www.kettering.gov.uk](http://www.kettering.gov.uk)

**The Hedge Project; Claire Morris-Wright prints.**

Until 6 Jan 2019

ASHMOLEAN

Beaumont Street, Oxford, OX1 2PH

[www.ashmolean.org](http://www.ashmolean.org)

**Plum Blossom and Green Willow:**

**Surimono Poetry Prints.** This exhibition highlights rarely shown surimono from the Ashmolean's collections, including a number of new acquisitions, offering a rare insight into Japanese literati culture and customs of the early nineteenth century. Surimono were privately published prints combining witty poems with elegant images by leading designers of the time.

Until 17 Mar 2019

BOWES MUSEUM

Bowes Museum, County Durham

**Charlotte Hodes: Women and Pattern.**

The latest exhibition in The Bowes Museum's refurbished ceramics gallery, will showcase the unique work created by ceramicist Charlotte Hodes over the past decade. Hodes is a British artist whose work crosses a range of processes and is renowned for her large intricate papercuts and ornate ceramic vessels with handcut transfers.

Until 10 Feb 2019

BRISTOL MUSEUM & ART GALLERY

Queens Rd, Bristol, BS8 1RL

[www.bristolmuseums.org.uk](http://www.bristolmuseums.org.uk)

Bristol Museum presents a series of three exhibitions showcasing their collection of Japanese woodblock prints.

**Hokusai and Hiroshige: Masters of Japanese landscape prints.**

Until 6 Jan 2019

**Masters of Japanese prints: Life in the city.**

12 Jan – 12 May 2019

**Masters of Japanese prints: Nature and seasons.**

18 May – 8 Sept 2019

BRLSI

16-18 Queens Square

[www.brslsi.org](http://www.brslsi.org)

**Society of Wood Engravers**

annual exhibition of

members of SWE, a

range of approaches

using this unique art

Until 15 Dec

CLARE HALL

University of Cambridge

Cambridge, CB3 9AA

[www.clarehall.cam.ac.uk](http://www.clarehall.cam.ac.uk)

exhibitions

**Metmorphoses and**

**Brown.** Mathematic

printmaker David B

body of digital print

Until 11 Dec

THE CRAFT CENTRE

City Art Gallery, Le

[www.craftcentrelee.org](http://www.craftcentrelee.org)

**Karolina Larusdottir**

**Exhibition.** A collec

renowned printmak

Larusdottir.

Until 26 Jan 2019

**Gail Kelly – Solo P**

Timeless woodcut a

landscapes printed

2 Feb – 22 Jun 201

CURWEN PRINT S

STUDIO

Chilford Hall, nr Lin

**inkedUp Printmake**

1 & 2 Dec

FITZWILLIAM MUS

Charrington Print R

Cambridge, CB2 1RF

[www.fitzmuseum.cam.ac.uk](http://www.fitzmuseum.cam.ac.uk)

**Print REbels: Hader**

**and the origins of t**

**Painter-Printmaker**

Until 6 Jan 2019

**Amateur Etcher of**

**by Francis Seymour**

Until 6 Jan 2019

THE HIGGINS BED

Castle Lane, Bedfor

**Bawden's Beasts.** La

this exhibition.

Until 27 Jan 2019

HUDDERSFIELD A

Princess Alexandra

HD1 2SU



What's on › Exhibitions › [Charlotte Hodes: Women and Pattern](#)

# Charlotte Hodes: Women and Pattern

The Bowes Museum

13 October 2018 – 24 February 2019

**A** Free with National Art Pass



The latest exhibition in The Bowes Museum's refurbished ceramics gallery showcases the unique work of ceramicist Charlotte Hodes.

Charlotte Hodes is a British artist renowned for her large intricate papercuts and ornate ceramic vessels. Central to her work is the exploration of the female figure and its relationship to decoration and pattern.

Using standard vessel forms and everyday tableware, which she treats as her 'canvas', she builds up rich and complex surfaces through a direct process of drawing and collage.

This exhibition presents work from the last decade, from Hodes' time at the Spode factory and the Wallace Collection up to the present day, and includes vases as well as examples of her tableware.



Charlotte Hodes, *After the Taking of Tea*, 2018, hand cut transfer on china

Courtesy of The Bowes Museum

You are here > [What's On](#) > The Bowes Museum - Charlotte Hodes: Women and Pattern

# The Bowes Museum - Charlotte Hodes: Women and Pattern

The Bowes Museum  
Barnard Castle  
County Durham  
DL12 8NP

Tel: +44 01833 690606

Email

Visit Website

From



This latest exhibition in the Museum's refurbished ceramics gallery will showcase the unique work created by ceramicist Charlotte Hodes over the past decade. 1



All  
Events

Kids

Music

Films

TV

Arts and Museums

Comedy

Clubs and Classes

Sport and Leisure

## what's on Arts and Museums



### Charlotte Hodes: Women and Pattern The Bowes Museum

This latest exhibition in the Museum's refurbished ceramics gallery will showcase the unique work created by ceramicist Charlotte Hodes over the past decade.

#### Information

**The Bowes Museum**

Newgate  
Barnard Castle  
DL128NP

Ad

Wh

Wh

Ev

Na

Ca

Wh

Wh

Ar

E

W

an

REC



cer

fash

mon

Keit

star

year

abili

and





SHOP NOW

## Events

Find an event



Add your event. It's free »

What?

--- All Events ---

and

- ☐ Family events  
☐ Christmas

When?

From

To

Where?

--- Your local area ---

Search »

### Charlotte Hodes: Women and Pattern

**Where:** The Bowes Museum, Newgate, Barnard Castle, Yorkshire, DL12 8NP  
**When:** 13 October to 24 February  
 10:00am to 5:00pm  
**Every:** Saturday, Sunday, Monday, Tuesday, Wednesday, Thursday, Friday  
**Next On:** November 16th 2018 at 10:00am  
**How much:** Included in admission charge  
**Contact:** [info@thebowesmuseum.org.uk](mailto:info@thebowesmuseum.org.uk)  
 01833 690606

Add to calendar: [Google](#) | [Outlook](#) | [iCal](#) | [Yahoo!](#)

### Exhibitions



This latest exhibition in the Museum's refurbished ceramics gallery will showcase the unique work created by ceramicist Charlotte Hodes over the past decade.



[Print event »](#)
[Email event to a friend »](#)  
[Report event »](#)



**emma's diary**  
**OFFERS**  
PRODUCTS WILL VARY

**Best buys at great prices**  
**NEW OFFERS ADDED WEEKLY**

**VIEW NOW**

[Home](#) | [Local What's On](#) | [Charlotte Hodes: Women and Pattern @](#)



# Charlotte Hodes: Women and Pattern @

## Where

, Barnard Castle, Durham, Durham, DL12 8NP

## When

13 Oct 2018 - 24 Feb 2019

10.00 - 17.00

Monday, Tuesday, Wednesday, Thursday, Friday, Saturday, Sunday





# THE STAND

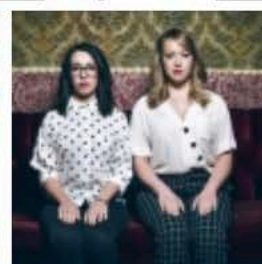
## COMEDY CLUB BAR & KITCHEN

WWW.THESTAND.CO.UK  
T: 0191 300 9700

# LIVE COMEDY 7 NIGHTS A WEEK

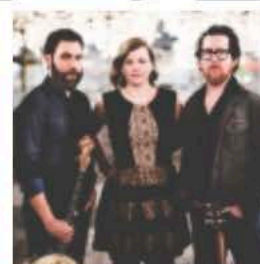
## GLASGOW FILM FESTIVAL 2019

20 FEB - 3 MAR  
THE PERFECT MOVIE MIX



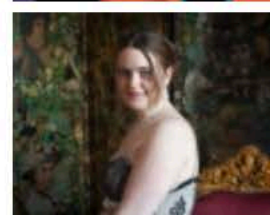
**Flo. Joan. Very funny.**

Flo & Joan were one of the HUGE hits at the Edinburgh Fringe Festival last year and they...



**Once more with feeling**

Newfoundland has a storied history of stunning songwriters, poets and players and over t...



**STUDY FOR AN OPEN**

< Back to results

## ART EDITORIAL



**I DETECT A  
PATTERN HERE...**



Like 0

Charlotte Hodes' ongoing exploration into the female figure and its relationship to decoration and pattern really comes to the fore in a stunning exhibition, which can currently be seen at the Bowes Museum.

A leading figure in contemporary art, Charlotte Hodes' work deftly skips back and forth between the boundaries that exist between the fine and decorative arts. She draws heavily on craft processes, but uses these to create imagery firmly situated within the language of fine art, bringing her considerable experience as a painter to both her extraordinarily intricate papercuts and ceramic wares, which serve as her alternative canvas. Paula Rego is a fan commenting: "In Charlotte's pictures the pattern does not stay within the outline. It overlaps and takes on an existence of its own." Along with the relationship between the pictorial and pattern, representation of women is key to her work and that is fully explored in this exhibition which presents work from her time at the Spode factory and the Wallace Collection, right up to the present day, and includes vases as well as examples of her tableware.

*Charlotte Hodes: Women and Pattern, until 24 February, Bowes Museum, Barnard Castle. [thebowesmuseum.org.uk](http://thebowesmuseum.org.uk)*





EXHIBITION

# Charlotte Hodes: Women and Pattern

13 Oct 2018 - 24 Feb 2019

[Times and details](#) ▾


**The Bowes Museum**  
[Durham](#)  
[England, United Kingdom](#)  
[Location details](#) ▾





Europe > United Kingdom (UK) > England > Durham > Barnard Castle > Barnard Castle - Things to Do > The Bowes Museum

# “Thoroughly enjoyed our visit!”


 Review of The Bowes Museum



600 photos

## The Bowes Museum

 Newgate, Barnard Castle DL12 8NP, England

 +44 1833 690606 
  Website 
  E-mail 
  Improve this listing



naomiihb  
Inverness,  
United  
Kingdom

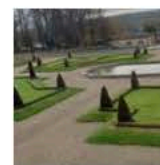
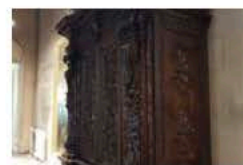
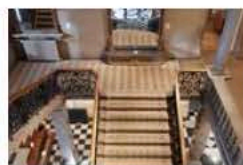
 59  17


 Reviewed 11 November 2018  via mobile

## Thoroughly enjoyed our visit!

Had a lovely day with my husband at the Bowes Museum. Especially enjoyed the Catwalk exhibit there currently. Loved seeing the Alexander McQueen pieces in real life. Brilliant and diverse range of exhibits. Really enjoyed looking at the beautiful work of Charlotte Hodes aswell. Would definitely come back if we ever visit the area again. You can easily spend a good few hours there. Loved it.

**Date of experience:** November 2018



[Ask naomiihb about The Bowes Museum](#)

 Thank naomiihb

