

# THE LONDON GROUP AT ST IVES



## Forthcoming Exhibitions and Events

### 2018

Drawing Distinctions - works on paper

A joint exhibition with The London Group and The Art Faculty and Alumni of Wisconsin Stout University, Menomine, USA.

17 September-29 October

Furlong Gallery, University Wisconsin Stout, Menomine, USA

Povera - The President's Prize

Stephen Carley, Micheál O'Connell and Jockel Liess

9-15 November; daily 2-6

The Cello Factory

Artists' Talks, Thursday 15 November, 6-8

The London Group Christmas Exhibition

The Cello Factory

5-14 December; daily 2-6

Artists' Talks, Friday 14 December, 6-8

### 2019

In the Dark

16-19 January; daily 2-6

The Cello Factory

Drawing Distinctions

3-12 April, daily 2-6

The Cello Factory

Artists' Talks 12 April, 6-8

The 84th London Group Open

Autumn

The Cello Factory

### 2020

Draw III

Spring

The Cello Factory

The London Group Annual

Autumn

The Cello Factory

This catalogue is dedicated to

**Anne Cloudsley LG**

1915-2012

and generously funded in her memory

Elected to the Group 2002

The London Group is very grateful to Jane Humphrey for designing and producing this catalogue and gives her sincere thanks

First published in Great Britain in 2018 by The London Group

[www.thelondongroup.com](http://www.thelondongroup.com)  
[enquiries@thelondongroup.com](mailto:enquiries@thelondongroup.com)

Designed by Jane Humphrey  
ISBN 978-0-9927089-6-2

Texts © Suzan Swale, Susan Haire and Sue Davis.  
Photos of artists work: © courtesy of the artists.

No part of this publication can be reproduced, stored in a retrieval system or transmitted in any form or by any means, electronic, mechanical, photocopying, recording or otherwise, without the permissions of The London Group.

Printed by Brightsea Press, Exeter, Devon.

**BELGRAVESTIVES**  
Modern & Contemporary Art

## The London Group - the St Ives Connection

**8-29 September 2018**



Monday-Saturday 10-6  
[www.belgravestives.co.uk](http://www.belgravestives.co.uk)  
+44 (0)1736 794888

Belgrave St Ives  
22 Fore St, St Ives  
TR26 1HE



The exhibition includes work by earlier members of The London Group with a strong St Ives association, for example Barbara Hepworth and Terry Frost. Also included are several artists selected from the rich history of The London Group whose work has been represented in exhibitions of Modern British Art at the Belgrave Gallery, London.

It is 20 years since Belgrave Gallery opened in St Ives and the association with The London Group to run both exhibitions simultaneously in the art-focussed town of St Ives is a unique and exciting event that helps mark the occasion.



**Terry Frost Three Graces 1960**  
Acrylic and watercolour on paper

Belgrave St Ives have produced a separate catalogue for The London Group - the St Ives Connection



## The London Group - at St Ives

**8-29 September 2018**

**PENWITH**  
SOCIETY OF ARTS IN CORNWALL  
**GALLERY**



**Monday-Saturday 10-5.30**

**Artists' Talks:**  
**Saturday 8 September**  
**10.30-12**

[www.thelondongroup.com](http://www.thelondongroup.com)  
[www.penwithgallery.com](http://www.penwithgallery.com)  
**+44 (0)1736 795579**

**Curated by Suzan Swale**

**The Penwith Gallery,**  
**Back Road West, St Ives,**  
**Cornwall TR26 1NL**



## Introduction

The London Group is having nine shows this year in some surprising venues ranging from an old crypt and a churchyard to a central London underground car park and a university in Wisconsin. But we have been full of anticipation for this exhibition in the Penwith Gallery which has had years of planning – nowhere could be more fitting for a London Group regional exhibition and it is exciting that 75 members are taking part. We are thrilled to bring a show to St Ives that demonstrates the breadth of work that we as a group celebrate. We loved the Penwith Society's recent show in The Cello Factory, our London base, and the ceramic works stood out for us, a very fine but unusual sight in the gallery and it so happens that we have no London Group members who are primarily ceramicists. We should make amends!

The London Group, founded in 1913, was formed of an enlarged Camden Town Group, the English Vorticists and other independent artists. Founder members included Wyndham Lewis, Sickert, Bomberg, Gaudier-Brzeska and Epstein who coined The London Group name. Unusually for its time it had women members – from its inception – and we are proud that the Penwith Society's illustrious founder member and benefactor Barbara Hepworth was also a member of The London Group. Other notable artists who were members of both The London Group and the Penwith Society are Alan Davie, Terry Frost, Patrick Heron and Bryan Wynter.

Susan Haire  
President of The London Group

Sue Davis (chairman)

**PENWITH**  
SOCIETY OF ARTS IN CORNWALL  
**GALLERY**

In the summer of 2015 I stayed in the cottage next to Alfred Wallis's place in Harry's Court, Back Road, near the Tate Gallery St Ives. Whilst exploring on the first day, I discovered The Penwith Gallery the home of The Penwith Society of Artists. From that moment on I became obsessed with the idea that The London Group should exhibit in this unique space made from an old pilchard factory and surrounding properties. I was already familiar with Cornwall, having been taught by Paul Feiler and Karl Weschke at The West of England College of Art, Bristol, and had visited Barbara Hepworth's studio and Patrick Heron's "Eagle's Nest". I had painted in Karl Weschke's barn and had been taught by Roger Hilton. Terry Frost was also a good friend.

It has taken us three years for the planning and shaping of these three exhibitions to unfold. For me it has been a journey of discovery, starting at the age of nineteen as a young student at Bristol until now. There you have it. "The London Group at St Ives", a collaboration between two long-established artists' collectives, their histories and three beautiful galleries. The London metropolis meets the land of clear seas, granite and remarkable light.

Suzan Swale LG







**Eric Moody *The Thinker***  
Wood, metal and pigments - 40x40x8cm



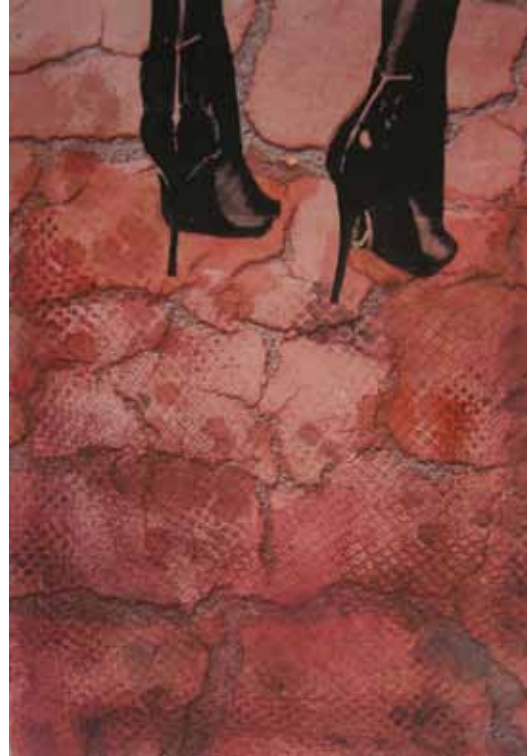
**Ece Clarke *Untitled 2017***  
Etching on Somerset paper - 63x44cm



**C Morey de Morand *Moral Dilemma***  
Acrylic on linen - 100x100cm



**Frank Bowling** *OBE RA Som III*  
Acrylic on collaged canvas - 70x70cm



**Janet Patterson** *Footloose Downunder*  
Mixed media on paper - 40x32cm



**Suzan Swale** *Artemisia*  
Acrylic on canvas - 112x112cm



**Marenka Gabeler** *Grandmother's Orchids*  
Oil on canvas - 25x30cm



**Bill Watson** *Ottoman Towers*  
Wood and stone - 57x43x31cm



**Mark Ainsworth** *The Alchemists Dream*  
Oil on canvas - 100x120cm

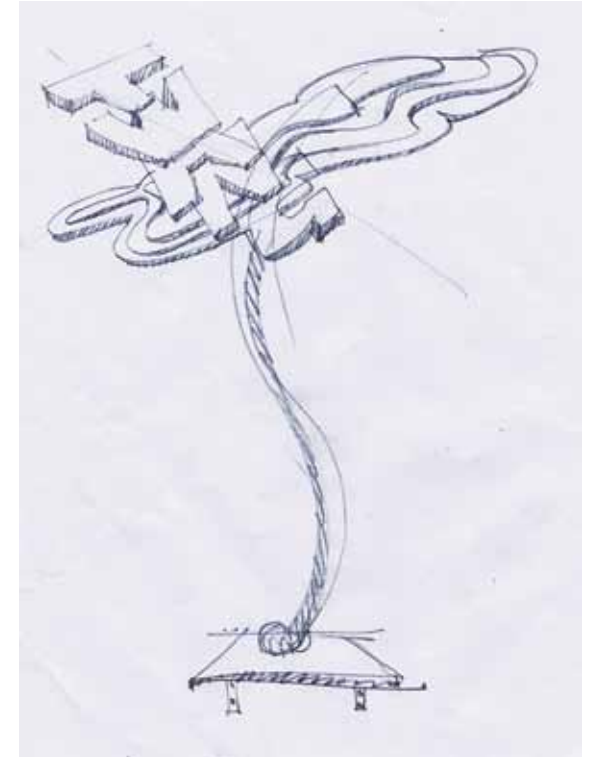




**Michael Thorpe** *Conversation Piece Vaux*  
Oil on canvas - 82x84cm



**Matthew Kolakowski** *Slim Slow Slider*  
Oil on canvas on board - 46x46cm



**Christopher Poulton** *Twang* (preparatory drawing for sculpture)  
Wood, carpet, lino and metal - 80x70x30cm





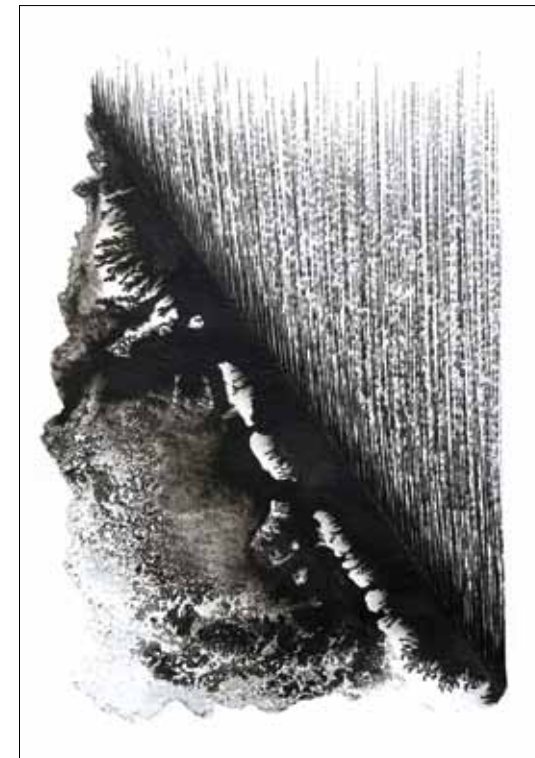
**Tricia Gillman**  
**Moment String 3**  
 Paper, card, paint, pencil,  
 charcoal and biro on paper -  
 145x15cm



**Anthony Eyton RA** *Figures on a Beach*  
 Etching - 32x64cm



**Anthony Whishaw RA** *Taking Aim II*  
 Collage and acrylic on board - 60.5x30cm



**Martin Heron** *A Promise Of Deliverance*  
 Pen and ink on paper - 42x34cm



**Aude Hérail Jäger Ethnological Museum I and II, Belgrade**  
Graphite and mixed media on paper - 42x65cm



**Slawomir Blatton Study for Nude**  
Watercolour - 55x72cm



**Erika Winstone Mark/Max with Two Men with Cigarette**  
Acrylic, enamel, wood silverpoint and gouache on canvas - 41x120cm



**Claire Parrish Rebar S10**  
Graphite on polyester film - 25x35cm





**Philip Crozier Study No. 16 for 'By Henshall Brook'**  
Oil on canvas - 92x107cm



**Peter Morrell Affirmation**  
Oil painting - 103x125cm



**Judith Jones In The Night Garden**  
Archival matte photograph - 42x61cm



**Daniel Preece River Thames at Dusk**  
Oil on canvas - 100x130cm





**David Shutt *The Triangular Field***  
Oil on canvas - 80x100cm



**Vaughan Grylls *Freckles Over Frankfurt***  
Digital print - 81x120cm



**David Tebbs *Graffiti Adventure***  
Oil on canvas - 71x92cm



**David Wiseman *Woodland River Walk down to Three Cliffs, Gower***  
Acrylic on canvas - 78x104cm



**Victoria Bartlett *Blossoms***  
Paper - 58x68x11cm



**Jeff Lowe *Form of Space***  
Zinc and powder coated steel - 110x130x85cm

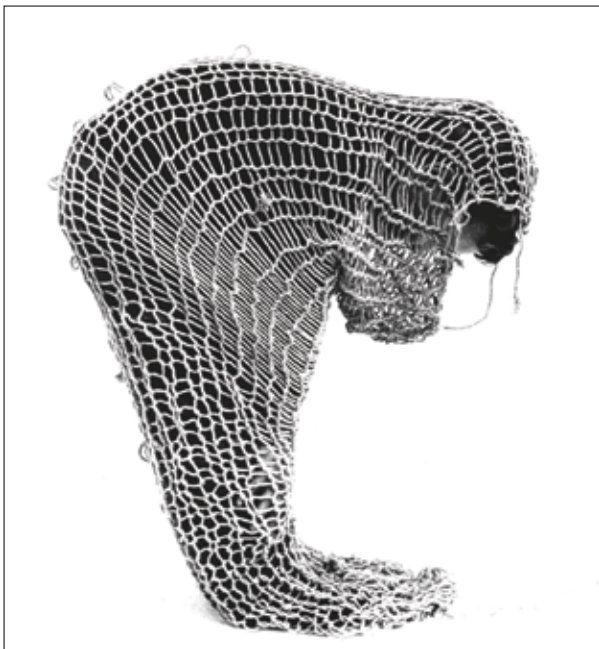


**James Faure Walker *May 10, no.2***  
Watercolour - 70x100cm



**Alexander Ramsay *Freedom of Movement 7***  
Pastel and charcoal on paper - 80x110cm





**Victoria Rance Cole as Worm**  
C-type photograph - 26x21cm



**Paul Tecklenberg Pair Tree (triptych)**  
Silver gelatine photograph, stainless steel and wood - 90x17x17cm



**Annie Johns Archive Floral/Herbarium Specimen (i)**  
Recovered staples and pins, herbarium paper and impasto gel - 42x60cm



**David Redfern Genomes or Genesis**  
Mixed media construction - 91x127cm





**Kathleen Mullaniff Songbird**  
Oil on canvas - 121x91cm



**Susan Haire Posy II (Pocketful of Posies series)**  
C Type on Dibond using litter picked up in the street - 50x42cm



**Graham Miles Coldfall I Reflections series**  
Giclee print - 59x84cm



**Tommy Seaward Herald's Jacaranda (detail)**  
Mixed media - 36x32x12cm



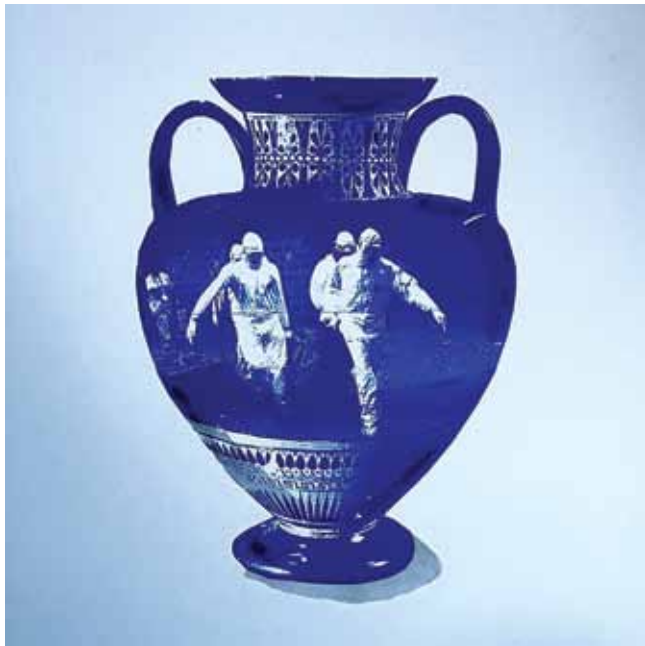
**Moich Abrahams *Guardian of the Truth***  
Acrylic, concrete and resin on canvas on wood - 46x36cm



**Ian Parker *Demarcation***  
Oil, wax and acrylic on panel - 40x30cm



**Sam Jarman *Common Ground***  
Silkscreen print - 108x78cm



**Tisna Westerhof *Delft Blue Vessel II***  
Silkscreenprint and watercolour - 40x30cm



**Clive Burton (Idea prototype for) *Plinth***  
Mixed media size - 110x30x30cm



**Peter Clossick *Friends, The Last Few Days***  
Oil on board - 122x122cm





**Michael Phillipson** *some time later*  
Mixed media on paper - 95x76cm



**Victoria Arney** *Walking and Falling at the Same Time*  
Etching with braille - 50x40cm



**Paul & Laura Carey** *Gary McCann*  
Bronze resin - 60x32x36cm



**Philippa Tunstall** *Grey Formality 4*  
Oil on board - 61x61cm



**Eugene Palmer** *They're Here*  
Oil on canvas - 143x91cm



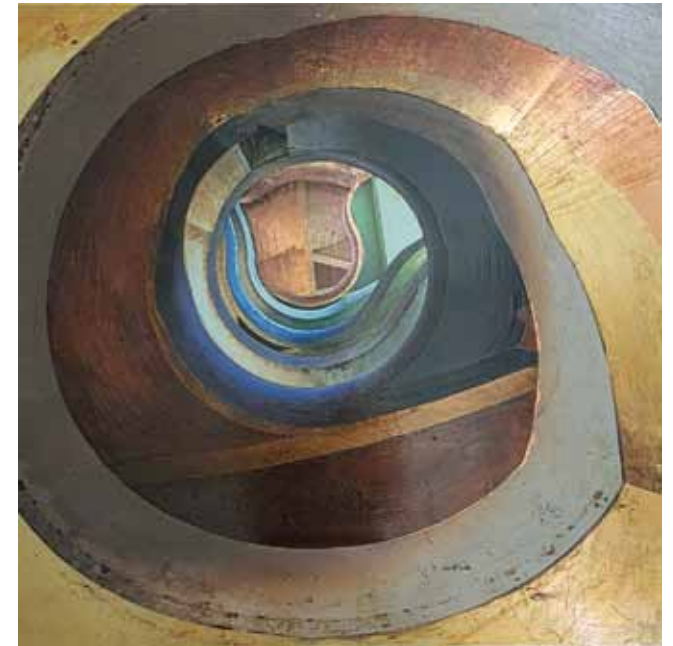
**Cadi Froehlich** *Interception*  
Copper and mixed media - 180x60x60cm



**John Crossley** *If I Had a Rainbow*  
Watercolour and gouache on paper - 58x56cm



**Susan Wilson** *The Scrubs, Edgelands*  
Oil on linen - 127x70cm



**Darren Nisbett** *Descending Spiral I*  
Inkjet on painted and gilded aluminium - 80x80x10cm





**Tom Scase** *Symbiosis*  
Paint, ink, gum and collage on canvas - 122x76cm



**Tim Craven** *Twin Pillars (Lady Park Wood)*  
Casein on canvas - 64x95cm



**Charlotte C Mortensson** *First Street*  
Archival photographic print mounted on aluminium - 60x80cm



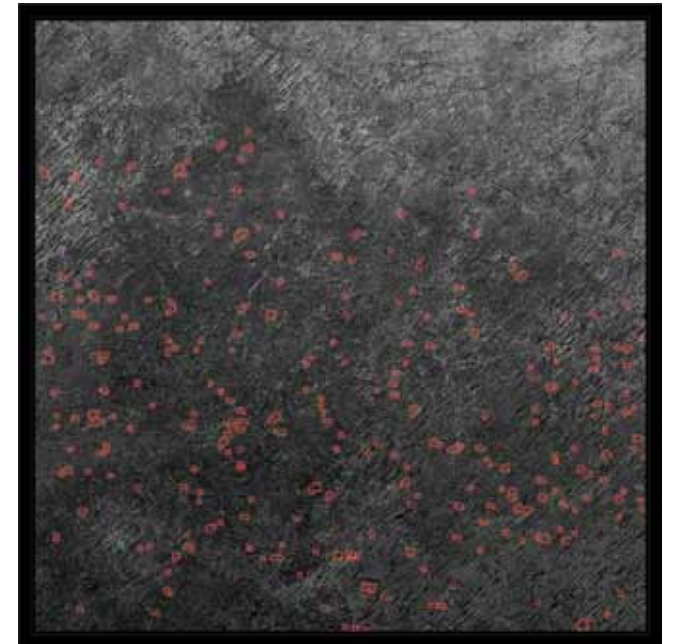
**Arthur Wilson** *Summer Sea and Shadows*  
Giclee print - 121x59cm



**Jane Humphrey *Untitled***  
Acrylic on canvas - 30x30cm



**Bill Henderson *Shadowplay and Spinnering* 2018**  
Acrylic on paper - 98x78cm



**Angela Eames *Fires Over Western Africa #2***  
Archival print (framed Dibond) - 52x52cm





**Almuth Tebbenhoff** *By Jove*  
Cor-ten steel - 100x100x3cm



**Gillian Ingham** *Sarabande II*  
Acrylic on canvas - 149x111cm



**Wendy Anderson** *Solo Stand*  
Oil and collage on canvas - 61x61cm





**Robert Clarke** *Cross Current*  
Acrylic on canvas - 80x80cm



**Neil Weerdmeester** *Goose Green*  
Gloss paint on aluminium panel - 120x90cm



**Philippa Stjernsward** *Mimosa*  
Oil and wax on canvas - 29x28cm



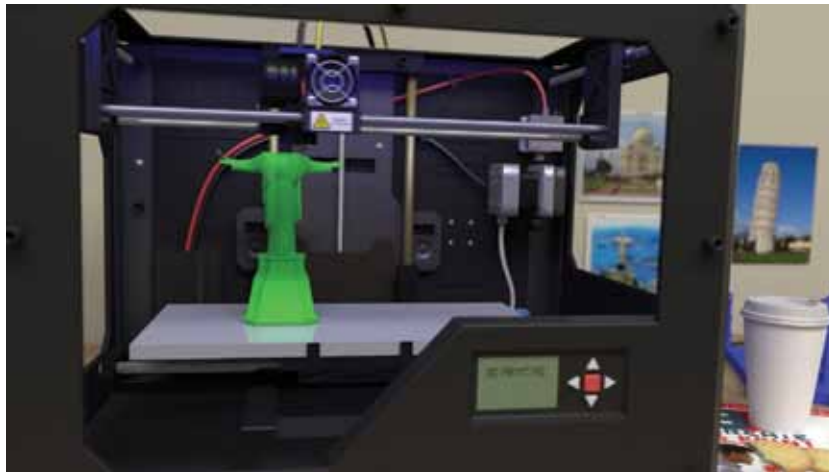
**Mark Dunford Red Tree Summer**  
Oil on board - 110x110cm



**Julie Held Blaze**  
Acrylic and oil on canvas - 122x61cm



**Pauline Little Plot**  
Oil on canvas - 40x40cm



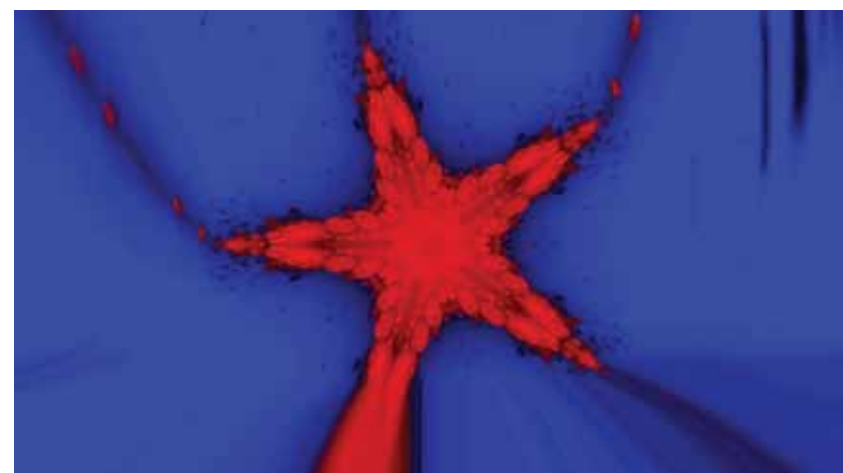
**David Theobald *Modern Wonder***  
Digital animation - 3mins 40secs



**Amanda Loomes *Prime***  
HD video - 7min 30secs



**Eric Fong *Reflection 04***  
HD video



**Genetic Moo *Becoming Starfish***  
Digital video - 3mins





**Bryan Bengé Locis**  
Digital video - 4mins 12secs

## OFFICERS, COMMITTEE MEMBERS AND MEMBERSHIP 2018

### Officers

#### President

Susan Haire

#### Vice-President

Gillian Ingham

#### Hon. Treasurer

Christine Styrnau\*

#### Hon. Secretary

Darren Nisbett

### Working Committee

The above 4 Officers and:

Tim Craven

Genetic Moo

Martin Heron

Judith Jones

Ian Parker

Claire Parrish

David Redfern

Suzan Swale

David Wiseman

### Membership Committee

The Working Committee  
(less\*) and:

Eric Fong

Almuth Tebbenhoff

Paul Tecklenberg

Philippa Tunstill

Erika Winstone

Note \* = non-artist member

Members' websites can be found on  
the individual artists' pages at  
[www.thelondongroup.com](http://www.thelondongroup.com)

Moich Abrahams

Mark Ainsworth

Wendy Anderson

Victoria Arney

Victoria Bartlett

Bryan Bengé

Slawomir Blatton

Frank Bowling OBE RA

Clive Burton

Paul & Laura Carey

Stephen Carley

Ece Clarke

Robert Clarke

Peter Clossick

Robert Coward Honorary Member

Sandra Crisp

John Crossley

Philip Crozier

Gus Cummins RA

Jeff Dellow

Mark Dickens

Mark Dunford

Angela Eames

Anthony Eyton RA

James Faure Walker

Cadi Froehlich

Marenka Gabeler

Tricia Gillman

Anthony Green RA

Vaughan Grylls

Alexandra Harley

Julie Held

Bill Henderson

Aude Hérail Jäger

John Holden

Jane Humphrey Life Member

Sam Jarman

Annie Johns

Richard Kemp

Matthew Kolakowski

Jockel Liess

Mike Liggins Honorary Member

Pauline Little

Amanda Loomes

Jeff Lowe

Peter Lowe

Graham Mileson

Eric Moody

C. Morey de Morand

Peter Morrell

Charlotte C. Mortensson

Kathleen Mullaniff

Janet Nathan

Micheál O'Connell

Ken Oliver

Eugene Palmer

Janet Patterson

Michael Phillipson

Christopher Poulton

Daniel Preece

Alexander Ramsay

Victoria Rance

Simon Read

Dame Paula Rego DBE RA

Tom Scase

Tommy Seaward Life Member

David Shutt

Philippa Stjernsward

David Tebbs

David Theobald

Michael Thorpe

Bill Watson

Neil Weerdmeester

Tisna Westerhof

Anthony Whishaw RA

Arthur Wilson

Susan Wilson

Gary Wragg

The **LONDON**  
**GROUP** visual arts  
since 1913



**PENWITH**  
SOCIETY OF ARTS IN CORNWALL  
**GALLERY**

Published by The London Group  
ISBN 978-0-9927089-6-2