

No



PRIVATE MUSEUM

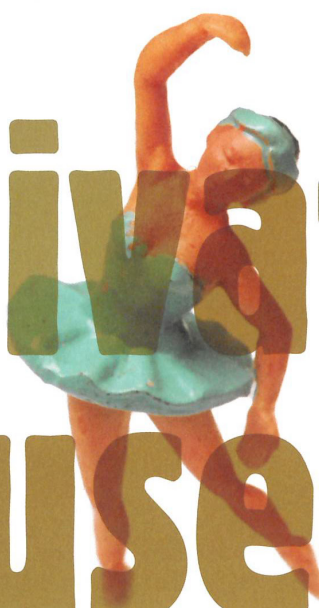
FIELDSTUDY



FIELDSTUDY 6



Private Museum



Private Museum was researched by Val Williams and Lorna Crabbe in the summer of 2005, and photographed by Laura Thomas. The Musgrave Collection is at 77 Seaside Road, Eastbourne, Sussex and is open from February until October. Please contact the Museum on 01323 648106 for opening times.

George Musgrave's private museum is on a quiet shopping street in the southern English seaside town of Eastbourne. Among the charity shops, souvenir emporiums, newsagents and decaying hotels, the Musgrave Collection is an unusual and somewhat startling enterprise. Artist, designer, filmmaker, storyteller, collector, George Musgrave has, at ninety years of age, created a museum around his own life, interests and collections, constructing an idiosyncratic, self-curated, vision of a personal archive. In 2004, the Photography and the Archive Research Centre collaborated with Tate Modern to devise a series of seminars, which examined and interrogated the visual archive. It looked at a range of archival activities, from forensic anthropology to architectural salvage. At its centre was the notion of dispersal, retrieval and collecting, both private and public. The discovery, by Val Williams and Lorna Crabbe, of the Musgrave Collection and their subsequent invitation to Laura Thomas to make photographs for an issue of *Fieldstudy*, was a reminder that museums, now invariably institutionalised, controlled by national or local cultural policy, were, originally, the product of personal vision or obsession. George Musgrave's hand-made, low-tech self-curated museum

is an idiosyncratic use of a personal archive, ranging from coin collections to dioramas, from painted portraits to pottery fragments.

The Musgrave collection can be viewed on many different levels, from a simple appreciation of the objects on display, to a delight in the kind of eccentricity which itself can be in danger of becoming institutionalized through mainstream culture. The Musgrave collection challenges many notions, of curatorship and connoisseurship, of specialist mediation, of excellence. It is fantastical, eerie and perplexing, a cabinet of curiosities which both defies and compliments contemporary museum practice. The Musgrave Collection can be seen as an artwork in its own right, fashioned from ordinary objects and driven by an extraordinary desire for an audience for a spectacle.







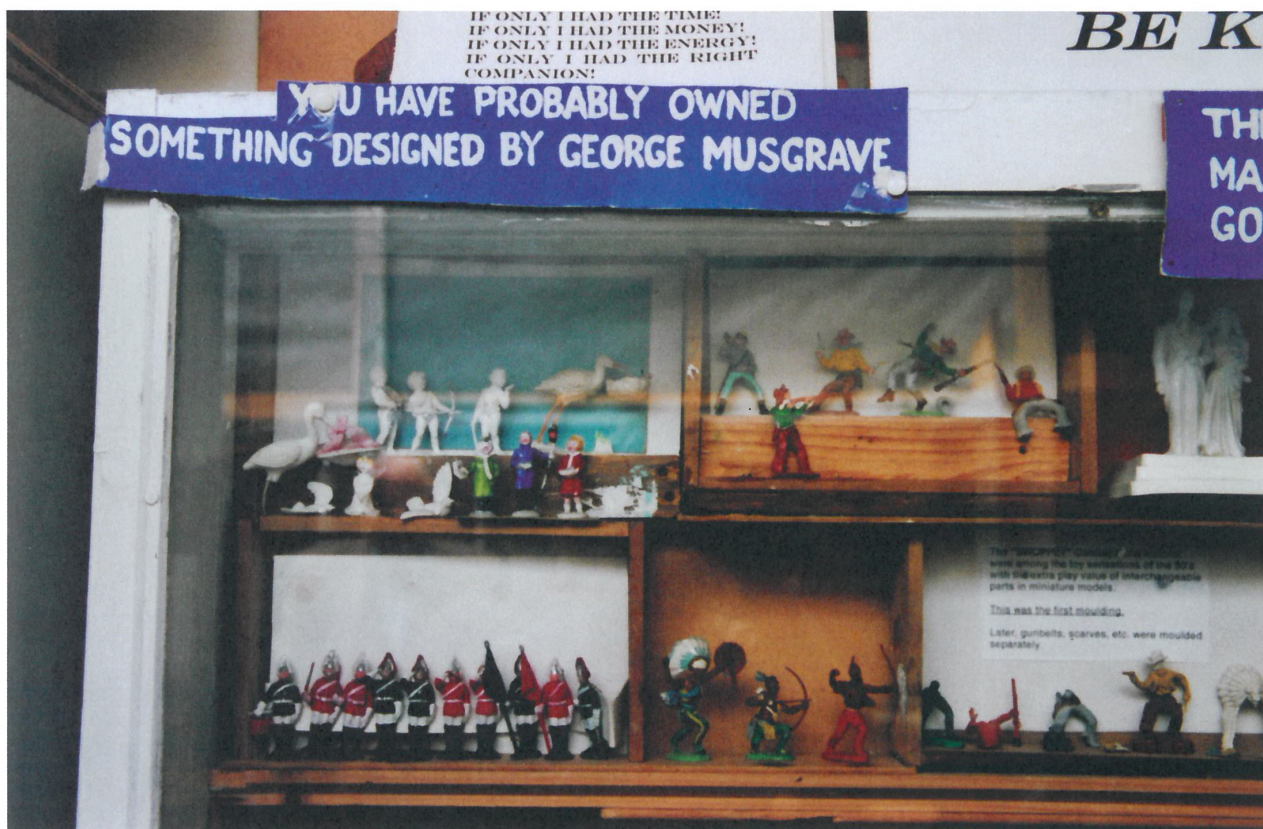
Moulds for flexible dolls for
Doll's House manufacturer
1964.





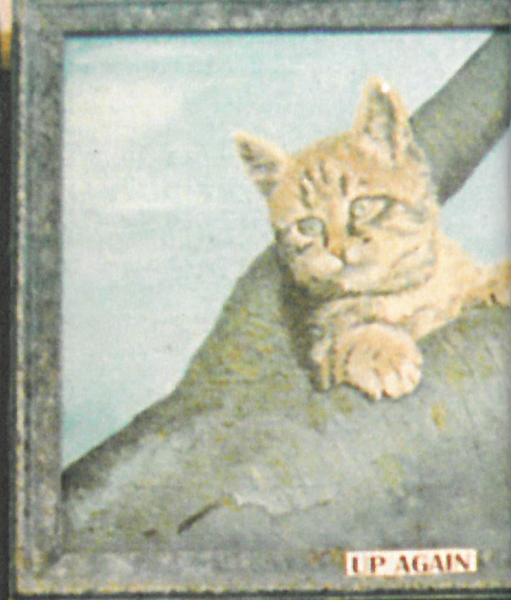








GRAND ANSON FARM DEACONS



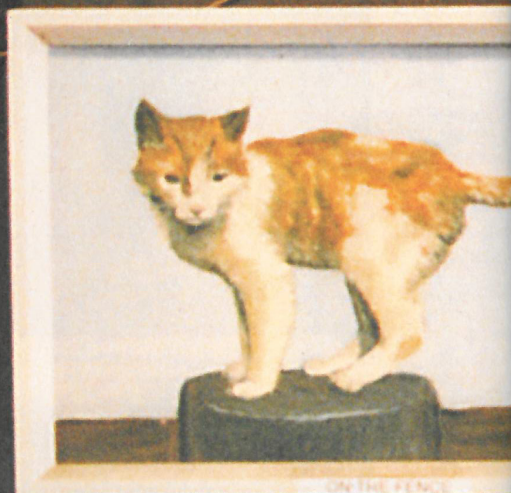
UP AGAIN



MY HOUSE



SPILED MILK



ONE FOOT & NOY



STRAWBERRY JAM



KEYHOLE VIEW



Trunks

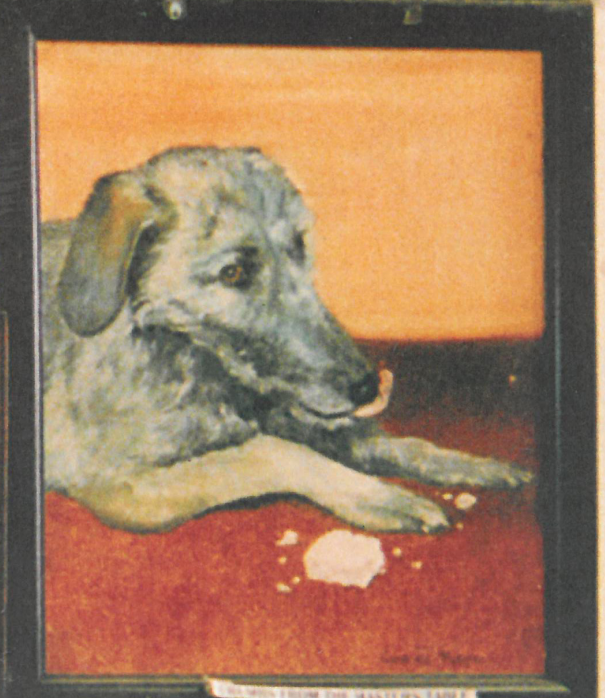


SLEEPING PARTNERS



George H. Mayne

SOMEONE IS LOOKING AT US



THEY'VE COME FROM THE MOUNTAIN LAND



MANTLEPIECE



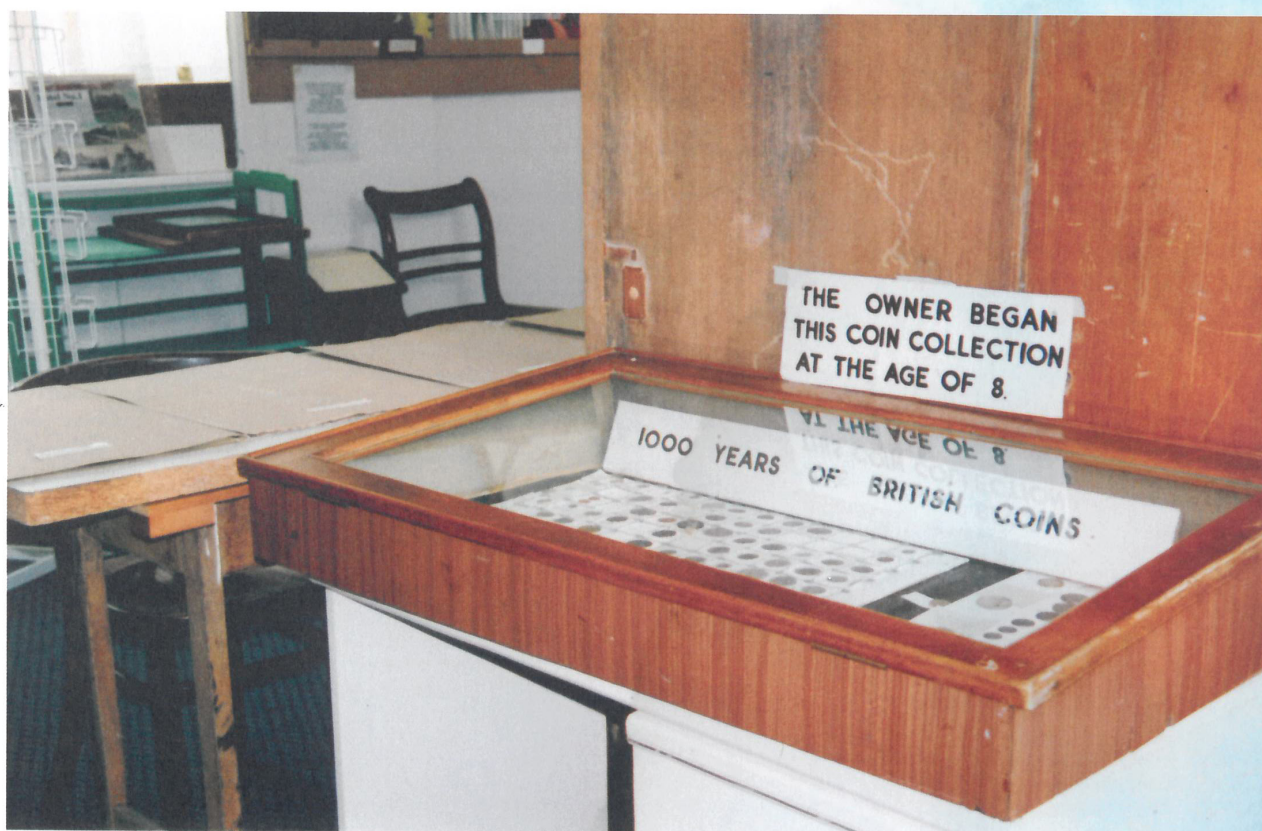
PAIS



CHANGING SEASONS
A 3D SPECTACULAR
The more you look the more you see













PLEASE NOTE: THIS IS
NOT 'SUBBUTEO'!

18

'CUP-TIE' WAS THE
CREATION OF
GEORGE MUSGRAVE

EXHIBITED AT THE
BRIGHTON TOY FAIR 1960





The Photography and the Archive

Research Centre is part of the University of the Arts London and is based at the London College of Communication, Elephant and Castle, London SE1 6SB. The Centre organizes study days, seminar programmes, conferences, research projects and publications. For information about its activities and past and future events, see the Centre's website at www.photographyresearchcentre.co.uk or contact Lorna Crabbe on l.crabbe@lcc.arts.ac.uk t. +44 (0)20 7514 6625. Past issues of *Fieldstudy* are also available.

Photography and the Archive
Research Centre:

Director: Professor Val Williams
Administrator: Lorna Crabbe
Research Assistant: Bob Pullen
Journal Editor: Roger Hargreaves
Interns: Robin Silas Christian and
Ian Peppiatt.

Laura Thomas is a photographer based in Kent. Her recent projects include commissions for *Six Small Airports* in 2003 and *Useful Stitches* in 2004.

UNIVERSITY OF THE ARTS
LONDON LONDON COLLEGE OF
COMMUNICATION CAMBURY HILL COLLEGE OF
ARTS CENTRAL SAINT MARTINS COLLEGE OF ART
AND DESIGN CHELSEA COLLEGE OF ART AND
DESIGN LONDON COLLEGE OF FASHION

and the
Archive
Research
Centre

IF YOU THINK
THIS EXHIBITION
WORTH SEEING
TELL EVERYONE

FOR
FOR
FOR