



ual:

**the
exchange**

How do we create belonging in creative educational spaces?



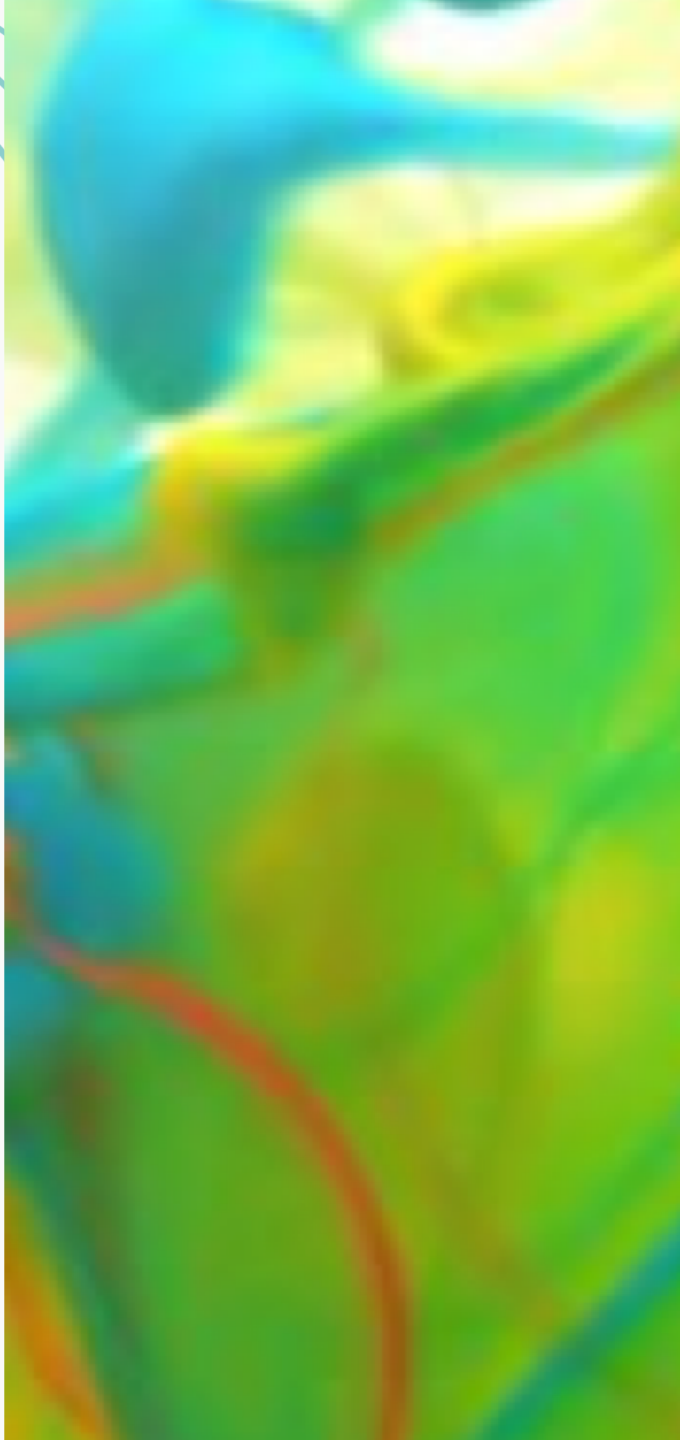
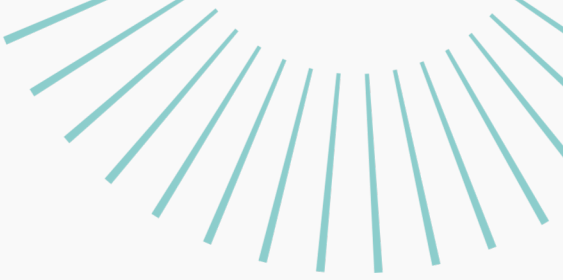
Liz Bunting & Vikki Hill
Academic Enhancement Team
GLAD 2021 Conference
23 April 2021



ual:

Session outline

- Share context of Enhancement work at UAL
- Introduce podcasts
- Take part in a Listening event
- Share reflections on using podcasts to respond to awarding differentials
- Open discussion on fostering belonging in creative educational spaces



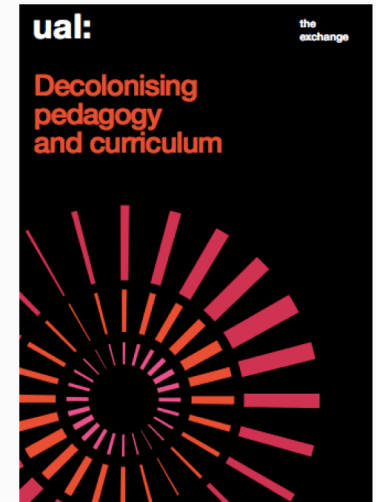
ual:

the
exchange

Fostering belonging and compassionate pedagogy

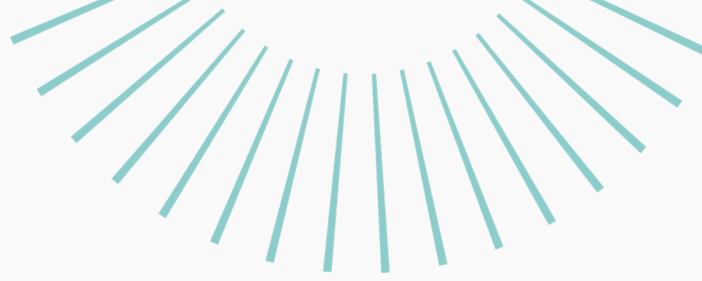


the
exchange



<https://www.arts.ac.uk/about-ual/teaching-and-learning-exchange/resources/aem-and-attainment-resources>

ual:



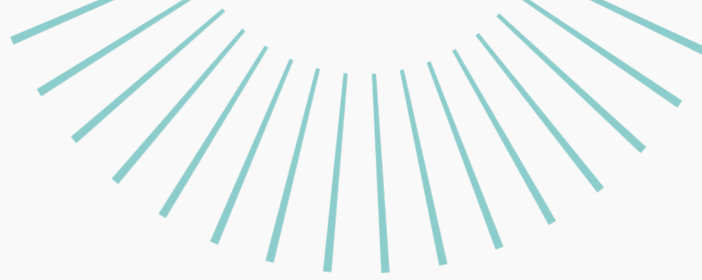
the
exchange

Belonging

- *'To teach in a manner that respects and cares for the souls of our students is essential if we are to provide the necessary conditions where learning can most deeply and intimately begin'* (bell hooks, 1994:13)
- *'Belonging or being fully human means more than having access. Belonging entails being respected at a basic level that includes the right to both co-create and make demands upon society'* (john a powell, 2019: 37)



ual:



Staff development themes

→ Relational understanding of staff development

‘The prevalence of recall of disagreements, rather than agreements, in the participants’ accounts of the workshop point to the role that discussions play in making meaning and understanding...’

→ Expectations of staff development

‘...participants highlighted different needs with some wanting a more practical approach and others a more theoretical exploration...’

Vikki Hill, Dr Emily Salines and Prof Susan Orr, *Art and Design Assessment Practices: Investigating the role of staff development in the implementation of new assessment criteria*, 2021 (Under Review)



ual:

Podcasts

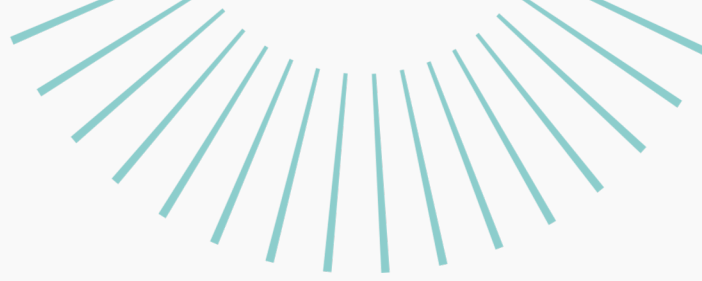
→ Listening

'We think we listen, but very rarely do we listen with real understanding, true empathy. Yet listening, of this very special kind, is one of the most potent forces for change that I know' (Carl Rogers, 1980)

→ Dialogue

Provide a polyvocal dialogue, which continues beyond the podcast itself and constructing knowledge through partnership (Freire, 1970).

Critical pedagogy cannot be defined by a single voice, but rather must gather a diversity of voices (Stommel, 2014).



ual:



the
exchange

Belonging in higher education



◀ All episodes

Interrogating Spaces

Belonging in Higher Education

JULY 22, 2020 NEIL CURRANT, HANSIKA JETHNANI, JESS MOODY, DR GURNAM SINGH, TERRELL STRAYHORN, LIZ THOMAS, DAVID WHITE
EPISODE 4



Interrogating Spaces
Belonging in Higher Education



00:03 | 46:19

<https://interrogatingspaces.buzzsprout.com/683798/4671476-belonging-in-higher-education>



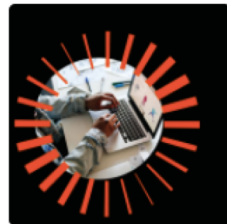
Belonging in online learning environments

◀ All episodes

Interrogating Spaces

Belonging in online learning environments

JULY 31, 2020 UAL TEACHING, LEARNING AND EMPLOYABILITY EXCHANGE SEASON 1 EPISODE 5



Interrogating Spaces

Belonging in online learning environments



00:00 | 45:58

LISTEN ON



SHARE EPISODE



<https://interrogatingspaces.buzzsprout.com/683798/4795271-belonging-in-online-learning-environments>



Dr Bonnie Stewart



Jess Moody



Dr Terrell Strayhorn



Jennifer Williams-Baffoe



Professor Liz Thomas



Hansika Jethnani



Neil Curren



Dr Gurnam Singh




David White

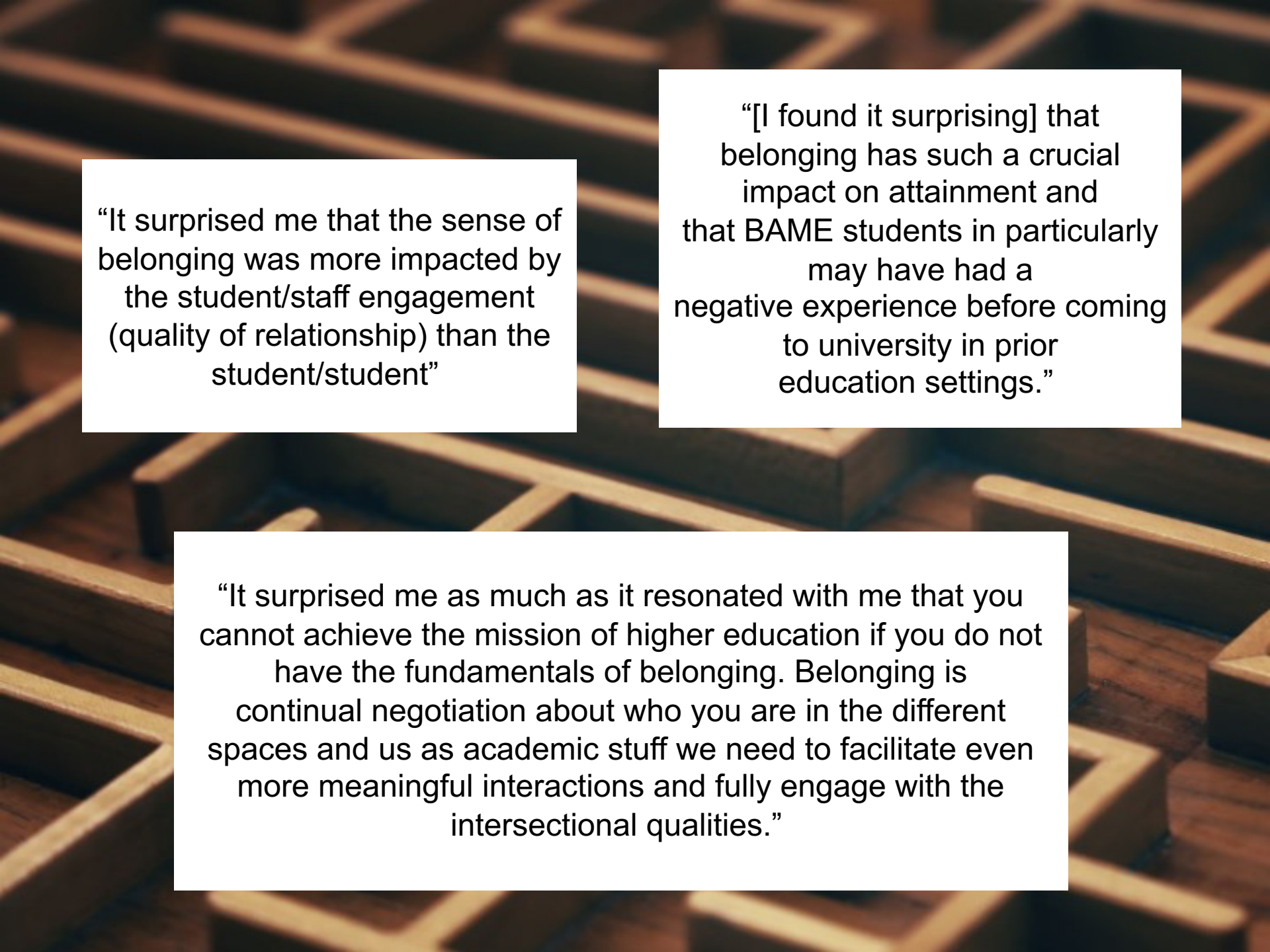
ual:



the
exchange

Listen... (please choose 1 of the following)

- 
- A decorative element on the left side of the slide, consisting of numerous thin, teal-colored lines radiating from a central point, forming a partial circular shape.
1. Belonging in higher education:
from 0:00 to 19:57
 2. Belonging in higher education
from 23:45 to end
 3. Belonging in online learning environments
from 0:00 to 20:00



“It surprised me that the sense of belonging was more impacted by the student/staff engagement (quality of relationship) than the student/student”

“[I found it surprising] that belonging has such a crucial impact on attainment and that BAME students in particular may have had a negative experience before coming to university in prior education settings.”

“It surprised me as much as it resonated with me that you cannot achieve the mission of higher education if you do not have the fundamentals of belonging. Belonging is continual negotiation about who you are in the different spaces and us as academic staff we need to facilitate even more meaningful interactions and fully engage with the intersectional qualities.”

ual:

the
exchange

How might you foster a sense of belonging for students and staff in your creative context?



References

- Freire, P. (1970) *Pedagogy of the Oppressed*, New York: Seabury
- Hill, V., Salines, E. and Orr, S. (2021, Unpublished) , *Art and Design Assessment Practices: Investigating the role of staff development in the implementation of new assessment criteria*
- Hooks, b. (1994) *Teaching to Transgress*, New York: Routledge.
- powell, j.a. (2019) *Building Belonging in a Time of Othering*. 16 April. Available at: <https://www.youtube.com/watch?v=7swl6jZ0rd4> (Accessed 9 February 2021).
- Rogers, C. (1980) *A Way of Being*, Boston: Houghton Mifflin,
- Stommel, J. (2014) <https://hybridpedagogy.org/critical-digital-pedagogy-definition/>



ual:

the
exchange

Thank you!



Vikki Hill
Educational Developer: Attainment
(Identity and Cultural Experience)
Academic Enhancement Team
v.hill@arts.ac.uk

Liz Bunting
Educational Developer:
Academic Enhancement Team
l.bunting@fashion.arts.ac.uk

