

'The Picture Connects All the Dots'

The role of art historical image maps in *Deadwind* Season 3



Dr. Tom Cardwell
Helsinki Collegium for Advanced Studies/
University of the Arts London

Key Questions

- How are image maps used in Deadwind Season 3?
- What is significant about the use of art historical images on the murder suspect's wall?
- What parallels can be found with Aby Warburg's *Mnemosyne Atlas*?





DEADWIND

SEASON 3

Serial pinboarding...



Contrasting walls in *Deadwind* Season 3



Stills from *Deadwind* S3 E4





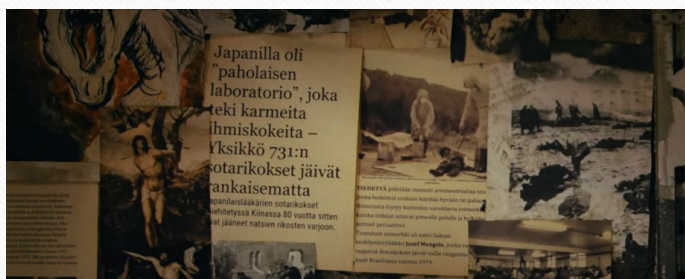
Still from *Deadwind* S3 E4 showing a reproduction of El Greco's *St. Francis Receiving the Stigmata* (around 1590).

Warburg's *Mnemosyne Atlas*



(left) Re-creation of the *Bilderatlas Mnemosyne* at Haus der Kulturen der Welt, Berlin, 2019, (right) detail of panel 47

Parallels



(left) Stills from Deadwind S3 E4, (right) Re-creation of Panel 32 from Aby Warburg's *Mnemosyne Atlas*

Conclusions

🌐 tomcardwell.uk
🐦 [@tomhcardwell](https://twitter.com/tomhcardwell)



Tom Cardwell *Iron Man* 2023 digital print based on original paintings 340 x 190 cm