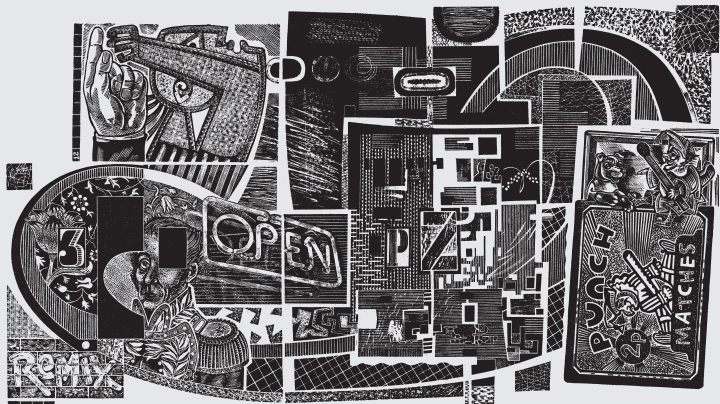


# Previews



*Creative Review* (2017) Peter Lawrence, Wood engraving, 150 x 270 mm

## Peter Lawrence: Making a Mark

**28 Mar–15 Apr**

North Wall Arts Centre, South Parade, Summertown, Oxford, OX2 7JN

[www.thenorthwall.com](http://www.thenorthwall.com)

Influential wood engraver Peter Lawrence presents a monumental retrospective of 125 works of engravings, paintings and collages produced over the past 25 years. A former Chair of the Society of Wood Engravers, since then Lawrence has become the bellwether of surrealism within the medium.

In the late 1990s he began to make paintings and collages, which 'led directly to a development in my engravings, both in producing the first abstract engravings and echoing the collages by introducing a variety of styles, sometimes within a single print.' Whilst it is impossible to do justice to this exhibition's incredible variety in a single feature image, these juxtaposed styles are evident in *Creative Review*, which incorporates examples of traditional engraving skill and subject matter within an entirely abstract and contemporary composition.

Newfound freedom in painting inspired Lawrence to improvise when engraving, not an easy endeavour in such a painstaking process. What do you do if you make a mistake? 'You swear and then you carry on!' Lawrence's sense of humour, combined with uplifting style and ambitious technical excellence, make this an exhibition not to be missed. The planning and detail of the black and white engravings contrast with the spontaneous and colourful paintings and collages to create a body of work in a wide range of styles – abstract, surreal, humorous and representational.

Also on display will be the *20 Duets* book, the sui generis experiment with jazz musician Paul Dunmall taking improvisation within engraving to the extreme by sharing the same block, involving each completing 20 wood blocks that had been started by the other, entirely without conferring. There are accompanying events including an opening, meet the artist, talk and a concert. Check the website for details.

## Johanna Love: Zeichnen im Garten der unendlichen Zeit (Drawing in the Garden of Endless Time)

**7 May–30 Jul**

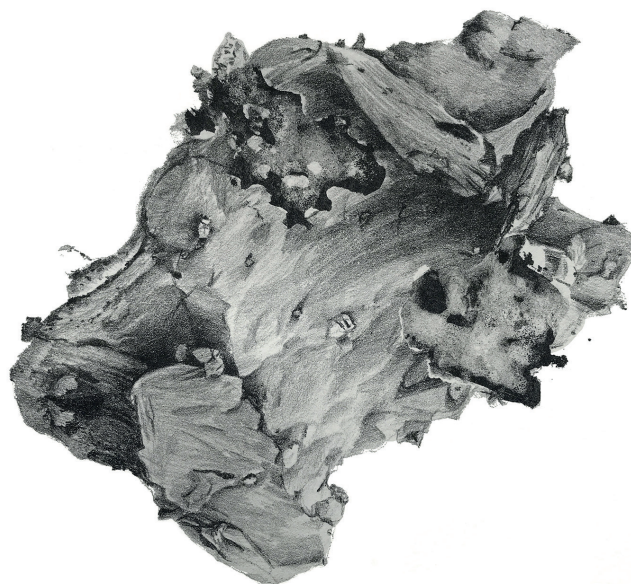
Museum Kloster Bentlage, Bentlager Weg 130, 48432 Rheine Mesum, Germany

[www.kloster-bentlage.de](http://www.kloster-bentlage.de)

Innovative artist and Scientific Associate at The Natural History Museum, Johanna Love, ignites two pre-conceivably mundane topics, dust and scientific imagery, to expose a hidden realm of beauty and fascination. Her subject is the dust taken from the reliquary shrine at Museum Kloster Bentlage, a former monastery, where she has been awarded a scholarship to produce a series of colossal lithographs. The stones, some over a staggering one square metre in size, will be printed at Deb Chaney Editions in Paris.

The creative process begins with the diligent collection of dust samples from the reliquary (comprised largely of insect matter, plant material and 500-year-old human bone), then using electron microscopy to achieve images of the overlooked and invisible particles at a scale and clarity that seems beyond imagination or understanding. The images emerging from this scientific visualisation are alien and strange, tangled masses of forms and surfaces or lonely angular fragments. Love takes these images, seemingly disconnected from reality and works by analogue means to gradually re-introduce the elements that they seem to exclude. Through stone lithography, her observation and imagination combine to embalm new aesthetic and meaning within the limestone's grainy, fossil-like surface.

Love first became interested in the concept of dust while completing a practice-based PhD at Chelsea College of Arts in 2013, which examined how the existence of dust on the surface of photographic printed images shifted visual perception. Now she has become a serial investigator and collector of fine particles. 'I have become increasingly interested in exploring the concept of dust and its physical and metaphysical implications. My interests are in the dust as an archive of time and place; of history and memory; and also of the discord between the scientific image and human perception.'



*Reliquienstaub II* (2022) Johanna Love. Stone lithograph on Somerset Satin 330gsm, 760 x 560 mm

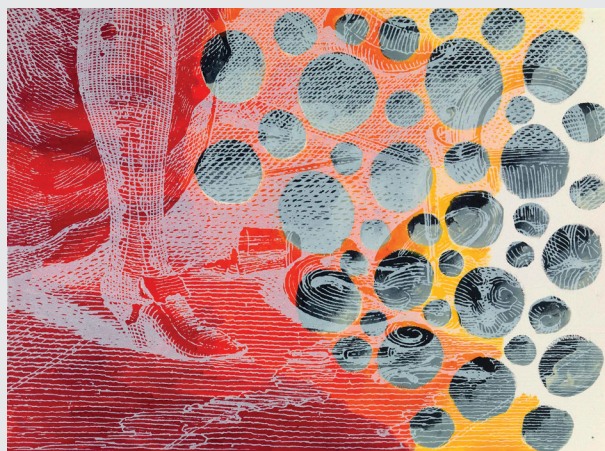
## Lubaina Himid: Alla Prima/Cross Hatch

10 Mar–22 Apr

Cristea Roberts Gallery, 43 Pall Mall, London, SW1Y 5JG  
[www.cristearoberts.com](http://www.cristearoberts.com)

Turner prize winner Lubaina Himid RA brings her pivotal work to the printmaking scene in this exhibition of original print at Cristea Roberts Gallery. Himid is known for her powerful approaches both technically and thematically; her activist work delves into uncovering lost identities and repressed cultural histories. She continues to be a pioneering force in the UK's Black Arts Movement stemming back to the 1980s.

Each of the 24 prints started out as a painting on paper, subsequently transformed with screenprinted detail from engravings by William Hogarth. These overlays, printed in collaboration with Magda Stawarska at ArtLab Contemporary Print Studio, feature fragments of Hogarth's works enlarged to such a scale that very fine incisions and cross-hatching marks are revealed as prominent new details. These works capture both the unique aspects of painting and the subtle variations in texture and opacity that come with each printing of an engraving plate.

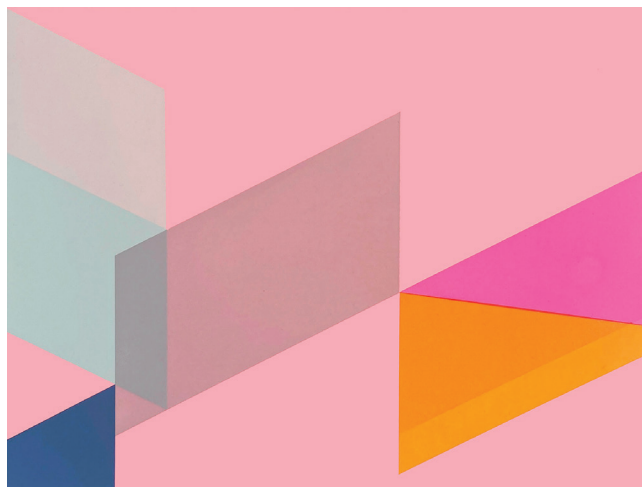


*A Rake's Progress Hole in her Stocking (3)* (2022) Lubaina Himid. Screenprint with extensive hand-painting in acrylic on Arches Watercolour 640 gsm paper, 577 x 770 mm. Courtesy Lubaina Himid and Cristea Roberts Gallery, London © Lubaina Himid

The pair, who have been working together since 2005, chose to use etching ink through a very coarse screen. The different consistencies in the mix of screenprinting base to etching ink provided variations in transparency of the layers and this skillful use of inks achieved sharp, striking contrasts. 'Some elements disappear and different features start to be revealed', according to Stawarska, 'the whole process is a conversation between painting and print.'

Hogarth's works were a satirical critique of social issues he saw around him. Himid famously reimagined Hogarth's work in 1986 with her installation *A Fashionable Marriage*. This subsequent reference is more subdued and whether onlookers recognise the distinctive fragments belonging to his depictions of modern morality or not, these works are engaging on many levels and perhaps a timely reminder that the issues she raised in 1986 remain lurking in parts of society today.

## LISTINGS



*Linger 5* (2022) Frea Buckler, Screenprint on Aluminium, 300 x 400 mm. At F-Block Gallery

Please check with venues before travelling

### EXHIBITIONS: LONDON

#### THE BRITISH MUSEUM

Great Russell Street, London, WC1B 3DG  
[www.britishmuseum.org](http://www.britishmuseum.org)

#### Artists making books: poetry to politics

Until 17 Sep

#### Venice 1500 Jacopo de' Barbari and the rise of printmaking

Until 21 May

#### CRISTEA ROBERTS GALLERY

43 Pall Mall, London, SW1Y 5JG  
[www.cristearoberts.com](http://www.cristearoberts.com)

#### Lubaina Himid: Alla Prima/Cross Hatch.

See preview.

10 Mar–22 Apr

#### Memories: Etel Adnan & Howard Hodgkin

10 Mar–22 Apr

#### Joe Tilson: Breaking the Rules

28 Apr–3 Jun

#### EAMES FINE ART GALLERY

58 Bermondsey Street, London SE1 3UD  
[www.eamesfineart.com](http://www.eamesfineart.com)

#### Harvey Daniels: Good Times. Luminous watercolours, etchings and woodcuts.

19 Mar

#### ROYAL ACADEMY

Burlington House, Piccadilly, London W1J 0BD  
[www.royalacademy.org.uk](http://www.royalacademy.org.uk)

#### Katherine Jones RA. Taper to Green.

Sir Hugh Casson Room.

Until 26 Mar

#### Emma Stibbon RA: Whaling Station

#### Deception Island, Antarctica: A Work in Focus.

Collections cabinet display.

Until 23 April

#### SLAUGHTERHAUS Print Studio

Vincent's Yard, 23 Alphabet Mews, SW9 0FN  
[www.slaughterhaus.net](http://www.slaughterhaus.net)

#### stars.punchy.curve. An exhibition of work from the HAUSPrint Etching Year.

11–21 May

#### SOUTHBANK PRINTMAKERS GALLERY

Gabriel's Wharf, 56 Upper Ground, London SE1 9PP  
[www.southbankprintmakers.com](http://www.southbankprintmakers.com)

#### Jane Stothert. Graphic architectural and nautical screenprints.

6–19 Mar

#### Nicola Styan. Screenprinted cityscapes.

20 Mar–2 Apr

#### Julie Sullock. Abstract, coloured etchings.

3–16 Apr

**Maureen Sweeney.** Bold and expressive screenprints.

17–30 Apr

#### Roy Tonkin. Landscape monoprints.

1–14 May

#### V&A

Cromwell Road, London SW7 2RL

[www.vam.ac.uk](http://www.vam.ac.uk)

#### Print and Prejudice: Women Printmakers, 1700–1930

Until 7 May

#### Paul Nash and the Art of the Book.

Illustrations and book jacket designs.

Until 13 Aug

### EXHIBITIONS: ENGLAND

#### ANIMA MUNDI GALLERY

Street-an-Pol, St Ives, Cornwall, TR26 2DS  
[www.animamundigallery.com](http://www.animamundigallery.com)

#### Rebel Women of the Apocrypha. Etchings by Marcelle Hanselaar RE.

Until 25 Mar

#### ASHMOLEAN MUSEUM

Beaumont Street, Oxford, OX1 2PH  
[www.ashmolean.org](http://www.ashmolean.org)

#### Dia al-Azzawi: Painting Poetry. Book arts, drawings, prints and a monumental ten-metre tapestry. Free exhibition.

Until 11 Jun

#### Art in China 1949–1999. Featuring pictorial woodblock printing developed from a folk craft to an increasingly creative medium used for both propaganda purposes and more subtle landscapes. Free exhibition.

Until 24 Sep

#### CANWOOD GALLERY

Hereford, HR1 4NF  
[www.canwoodgallery.com](http://www.canwoodgallery.com)

#### Alone Together. Arts Council-funded, hanging print installation responding to 'aleness' by SPIKED print collective.

5 May–11 Jun

#### CHIPPENHAM MUSEUM

9–10 Market Pl, Chippenham SN15 3HF  
[www.chippenham.gov.uk/chippenham-museum](http://www.chippenham.gov.uk/chippenham-museum)

#### Contemporary Print & Ink on Paper Press.

See preview issue no. 124.

Until 25 Mar

#### THE CRAFT CENTRE & DESIGN GALLERY

City Art Gallery, The Headrow, Leeds LS1 3AB

[www.craftcentreleeds.co.uk](http://www.craftcentreleeds.co.uk)

#### Still – Print Exhibition

Until 17 June

## LISTINGS

**Homegrown Showcase: Kirstie Williams and Andy Poplar of Vinegar & Brown Paper.** Screenprints, textiles, glassware and typography.  
22 Apr–22 Jul

### EASTGATE STUDIO

11 Eastgate, Beverley, HU17 0DR  
www.eastgatestudio.co.uk  
**Still.** Prints influenced by winter tranquillity.  
Until 1 Apr  
**In Focus.** Hull Print Collective.  
7 Apr–20 May

### F-BLOCK GALLERY

Bower Ashton Campus, University of the West of England, Kennel Lodge Road, Bristol, BS3 2JT  
www.uwe.ac.uk  
**Near and Far.** An exhibition of printmaking by staff including Frea Buckler.  
13–24 Mar

### THE FITZWILLIAM MUSEUM

University of Cambridge, Trumpington St, Cambridge CB2 1RB  
www.fitzmuseum.cam.ac.uk  
**Bearing Witness? Violence and Trauma on Paper.** Marcelle Hanselaar RE alongside prints from the collection.  
Until 2 Apr

### THE HEPWORTH WAKEFIELD

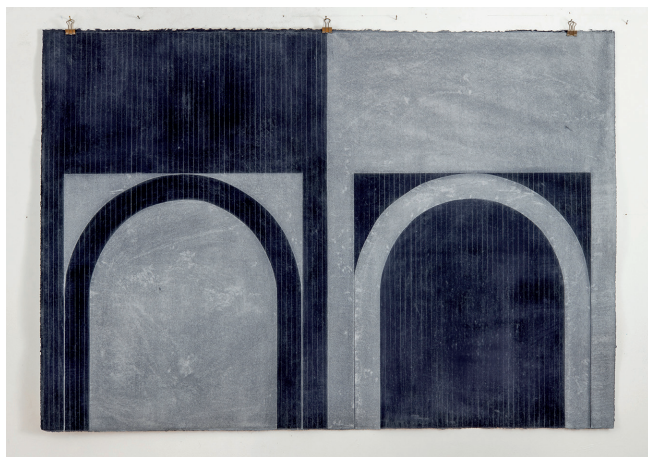
Gallery Walk, Wakefield, West Yorkshire, WF1 5AW  
www.hepworthwakefield.org  
**The Hepworth Wakefield Print Fair**  
25–26 Mar  
**Daisie Jacobs.** Cyanotypes.  
Until 1 Apr  
**Magic in this Country: Hepworth, Moore and the Land.** Lithographs and sculpture.  
Until Jan 2024

### THE HOLBURNE MUSEUM

Great Pulteney Street, Bath, BA2 4DB  
www.holburne.org  
**Illustrating the World: Woodcuts in the Age of Dürer**  
Until 23 Apr  
**Alberta Whittle: Dipping below a waxing moon, the dance claims us for release.**  
See profile p16.  
Until 8 May

### THE JOHN RYLANDS RESEARCH INSTITUTE AND LIBRARY

150 Deansgate, Manchester, M3 3EH  
www.library.manchester.ac.uk/rylands



*Shelter* (2022) Sandra Porter, Carborundum print with hand done black Indian ink. 760 x 1120 mm. At The Whittox Gallery

**Transitions in Print.** Revealing secrets of the European printing revolution.  
Until 18 Mar

### MUSEUM IN THE PARK, STROUD

Stratford Park, Stratford Rd, Stroud GL5 4AF  
museuminthepark.org.uk  
**Society of Wood Engravers: 85th Annual Exhibition.** Open call, juried exhibition.  
22 Apr–18 Jun

### THE MUSEUM OF EAST ASIAN ART

12 Bennett Street, Bath BA1 2QJ  
www.meaa.org.uk  
**Revolution, Propaganda, Art: Printmaking in Modern China.** See profile p10.  
Until 3 June

### NORTH WALL ARTS CENTRE

South Parade, Summertown, Oxford, OX2 7JN  
www.thenorthwall.com  
**Peter Lawrence: Making a Mark.** See preview.  
28 Mar–15 Apr

### PALLANT HOUSE GALLERY

8–9 North Pallant, Chichester, West Sussex, PO19 1TJ  
www.pallant.org.uk  
**Choreographing a Collection: The Bob Lockyer Bequest.** Featuring Cornelia Parker RA, Howard Hodgkin RA and more.  
Until 23 Apr  
**Sussex Landscape: Chalk, Wood and Water**  
Until 23 Apr  
**Birds and Beasts: The Wild Escape**  
Until 30 Apr

### SARAH WISEMAN GALLERY

40–41 South Parade, Oxford, OX2 7JL  
www.wisegal.com  
**Colour Balance.** Exhibition of four contemporary printmakers using colour: Hetty Haxworth, Emma Studd, Kate Watkins and Claire Willberg.  
Until 25 Mar

### ST BARBE MUSEUM

New Street, Lymington, SO41 9BH  
www.stbarbe-museum.org.uk  
**Scene through Wood: A Century of Wood Engraving.** Touring exhibition, curated by Anne Desmet RA RE.  
Until 22 Apr

### WESTGATE OXFORD

Castle Street, Oxford, OX1 1NZ  
www.westgateoxford.co.uk



*Ferns and Hydrangea Flowers* (2022) Julie Sullock, Etching, screenprint and hand watercolour, 260 x 260 mm. At Southbank Printmakers Gallery

**Swarm.** As part of Woolwich Contemporary Print Fair's Climate Art Installation Award, Leonie Bradley ARE scales up *Swarm* to a 10 metres-long screenprinted sculpture.  
2–16 Apr

### WHITTOX GALLERY

Whittox Lane, Frome, Somerset, BA11 3BY  
risefrome.com/the-whittox-gallery  
**Significant Form.** Bringing together two phases of print and painting separated by 32 years from Sandra Porter RWA. *The Siena Series* of large canvases made in 1990 and works on paper entitled *Shelter* created in 2022.  
22 Apr–18 Jun

### EXHIBITIONS: WALES, SCOTLAND & N. IRELAND

#### ABERYSTWYTH UNIVERSITY SCHOOL OF ART GALLERY & MUSEUM

Buarth Mawr, Aberystwyth, Ceredigion, SY23 1NG  
www.aber.ac.uk  
**At Cross Purposes.** Group show including prints.  
Until 21 Apr

#### CASTLE GALLERY INVERNESS

43 Castle Street, Inverness, IV2 3DU  
www.castlegallery.co.uk  
**Hilke MacIntyre**  
Until 25 Mar  
**Spring Mixed Exhibition**  
1–29 April

#### DICK INSTITUTE

Elmbank Avenue, Kilmarnock, KA1 3BU  
www.eastayrshireleisure.com  
**Georgia O'Keefe: Memories of Drawings**  
Until 22 Apr

#### GLASGOW PRINT STUDIO

Trongate 103, Glasgow G1 5HD  
www.gpsart.co.uk  
**Love of Print: International**  
Until 1 April

#### RUTHIN CRAFT CENTRE

Lon Parcwr, Ruthin, Wales LL15 1BB  
www.ruthincraftcentre.org.uk  
**Motive Motif: Artists Commemorate the Suffragettes**  
Until 16 Apr

#### SCOTTISH NATIONAL GALLERY OF MODERN ART

The Mound, Edinburgh, EH2 2EL  
www.nationalgalleries.org  
**Alberta Whittle. Create Dangerously.**  
See profile p16.  
1 Apr–7 Jan 2024

### TAIGH CHEARSABHAGH MUSEUM & ARTS CENTRE

Lochmaddy, North Uist, Western Isles HS6 5AA, Scotland  
www.taigh-chearsabhagh.org  
**EBBE+FLOW**  
Until 29 Apr

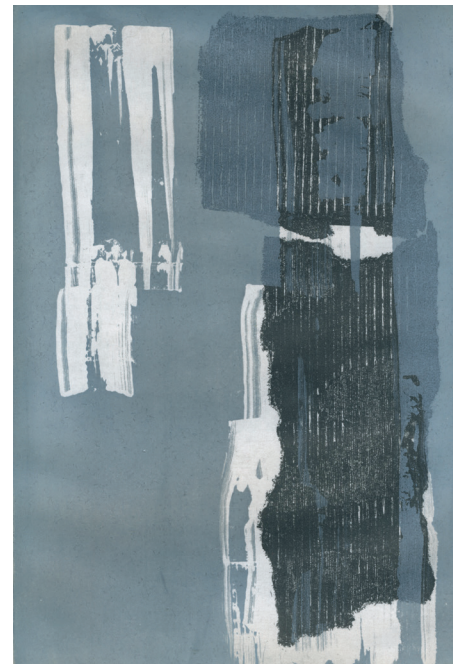
### EXHIBITIONS: EUROPE

#### MUSEUM DER MODERNE

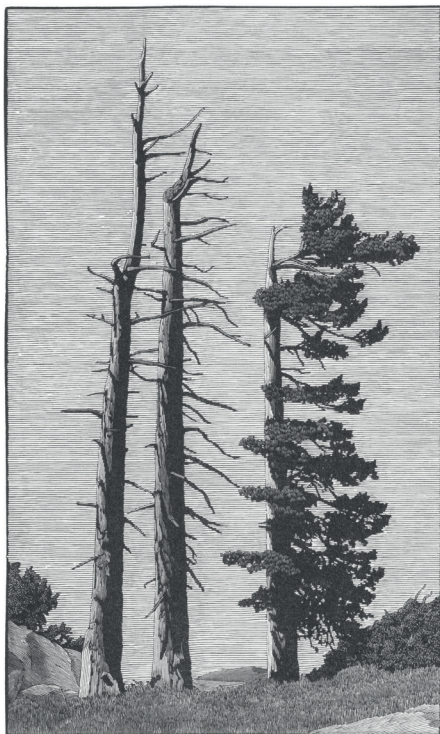
Altstadt (Rupertinum), Wiener-Philharmoniker-Gasse 9, 5020 Salzburg, Austria  
www.museumdermoderne.at  
**Mask and Face.** Inge Morath and Saul Steinberg  
Until 6 Jun

#### MUSEUM FRANZ GERTSCH

Platanenstrasse 3, Postfach, CH-3401 Burgdorf, Switzerland  
www.museum-franzgertsch.ch  
**Franz Gertsch: Colour Proofs.** Extensive colour tests from powered pigments.  
Until 18 Jun



*Honour I* (2023) Molly Scott, Etching, 295 x 200 mm. At SLAUGHTERHAUS Print Studio



*Two Down, One to Go I* (2022)  
Richard Wagener. Wood engraving,  
188 x 112 mm. At Museum in the  
Park

#### MUSEUM KLOSTER BENTLAGE

Bentlager Weg 130, 48432 Rheine Mesum,  
Germany

[www.kloster-bentlage.de](http://www.kloster-bentlage.de)

**Johanna Love: Zeichnen im Garten der  
unendlichen Zeit (Drawing in the Garden  
of Endless Time).** See preview.  
7 May–30 Jul

#### NATIONAL GALLERY OF IRELAND

Merrion Square West, Dublin 2, Ireland  
[www.nationalgallery.ie](http://www.nationalgallery.ie)

**Alice Maher and Jamie Murphy: Memento  
Civitem.** Letterpress, book art.  
Until 17 Sept

#### ROYAL LIBRARY OF TURIN (BIBLIOTECA REALE)

Piazza Castello 191, Torino, Italy  
[www.museireali.beniculturali.it](http://www.museireali.beniculturali.it)

**SMENS: La xilografia in rivista.** Woodcuts  
from the SMENS magazine archive including  
Barry Moser, Leonard Baskin and Simon  
Brett RE.  
Until 25 Mar

#### EXHIBITIONS: NORTH AMERICA, CANADA & BEYOND

#### ANNENBERG CENTER FOR THE PERFORMING ARTS

Annenberg Center, University of  
Pennsylvania, 3680 Walnut Street,  
Philadelphia, PA 19104–6219, USA  
[www.pennlivearts.org](http://www.pennlivearts.org)

**Excluded/Inclusion: The Work of Chen  
Lok Lee**

Until 31 May

#### CLEVELAND MUSEUM OF ART

11150 East Boulevard, Cleveland, Ohio 44106,  
USA

[www.clevelandart.org](http://www.clevelandart.org)

**Modern Impressions: Light and Water in  
Chinese Prints**

Until 7 May

#### HIGHPOINT CENTER FOR PRINTMAKING

912 West Lake Street, Minneapolis, MN,  
55408, USA

[www.highpointprintmaking.org](http://www.highpointprintmaking.org)

**McKnight Printmaking Fellowship**

Exhibition

Until 28 Mar

#### THE JANET TURNER PRINT MUSEUM

California State University, Chico,  
400 West First Street, Chico, CA 95929, USA  
[www.csuchico.edu/turner](http://www.csuchico.edu/turner)

**Prints by Juana Estrada Hernandez and  
Humberto Saenz.** See preview issue no. 124.

Until Apr

**27th Juried Student Print Exhibition and  
20th Ink & Clay.** Printmaking and ceramics.

18 Apr–13 May

#### LOS ANGELES COUNTY MUSEUM OF ART

5905 Wilshire Blvd., Los Angeles,  
CA 90036, USA

[www.lacma.org](http://www.lacma.org)

**Pressing Politics: Revolutionary Graphics  
from Mexico and Germany.** Tracing two  
key moments in print history: the revival  
of German Expressionist graphics in 1918  
and the formation of the Taller de Gráfica  
Popular (People's Print Workshop) in Mexico  
City in the late 1930s.  
Until 22 July

#### PHILADELPHIA MUSEUM OF ART

Main Building, 2600 Benjamin Franklin  
Parkway, Philadelphia, PA 19130, USA

[www.philamuseum.org](http://www.philamuseum.org)

**Macho Men: Hypermasculinity in Dutch  
& American Prints.** Bringing together  
depictions of masculinity from Holland in the  
1590s and the US during the Great Depression.  
Until 20 Mar

#### PRINT CENTER NEW YORK

535 West 24th Street, New York, NY 10011, USA  
[www.printcenternewyork.org](http://www.printcenternewyork.org)

**Nicole Eisenman: Prince.** Demonstrating  
how the artist moves fluidly between two-  
and three-dimensions, combining drawing,  
printmaking and sculpture.

Until May 13

#### ARTS FAIRS, CONFERENCES, OPEN STUDIOS & FESTIVALS

#### LONDON ORIGINAL PRINT FAIR

Somerset House, Strand, London, WC2R 1LA  
[www.londonoriginalprintfair.com](http://www.londonoriginalprintfair.com)

**London Original Print Fair 2023.**

38th Edition of the Fair, see diary p5.  
30 Mar–2 Apr

**Right Stranger** (2021) Jo Lysaght.  
Linocut reduction, 250 x 210 mm.  
At Aratoi Wairarapa Museum  
of Art and History

#### PAGES CONTEMPORARY ARTISTS' BOOK FAIR

Parkinson Court, University of Leeds

[www.pagesartistbooks.org](http://www.pagesartistbooks.org)

Pages Contemporary Artists' Book Fair.  
17–18 Mar

#### PAPER INK PRINT FESTIVAL

Landmark Arts Centre, Ferry Road,  
Teddington, TW11 9NN

[www.landmarkartscentre.org](http://www.landmarkartscentre.org)

**Paper Ink Print Festival.** Inaugural event  
of biennial printmaking festival.

17–19 Mar

#### PARIS PRINT FAIR

15 Rue de l'École de Médecine, 75006 Paris

[www.parisprintfair.fr](http://www.parisprintfair.fr)

22–26 Mar

#### PRINTMAKING, ARTISTS' BOOKS, LANDSCAPE AND NATURE

The Station, Silver Street, Bristol, BS1 2AG  
[www.cfrp.uwe.ac.uk](http://www.cfrp.uwe.ac.uk)

LAND2 & Book Arts at the CFPR present a  
free, one-day event of printmaking, artists'  
books, landscape and nature, exploring  
environmental themes including but not  
limited to water quality, land degradation,  
pollution and damage to the landscape.  
30 Mar

**Right Dog** (1981) Barry Moser.  
Wood engraving, 220 x 110 mm

