

A N I M A M U N D I



IN THE GARDEN: GIGGLES IN THE GREENERY

A graphic anthology of new works by
12 INTERNATIONAL ARTISTS

Initiated, curated and Riso printed by
DOMINICA HARRISON

With support from
MANCHESTER METROPOLITAN UNIVERSITY
AND UNIVERSITY OF ARTS LONDON

The inaugural book of the graphic anthology 'Anima Mundi', exploring inter-species communication between humans, plants, fungi, and minerals.

'Anima Mundi' books are artefacts that draw viewers' attention to diverse and wonderful life within more-than-human-world. The protagonist, Seraphina, who travels the Four Kingdoms represents open-minded curiosity and respect when encountering other lifeforms. As we navigate an era dominated by information saturation, a mental health crisis and pressing environmental issues, we need to urgently re-imagine our relationship with nature. 'In The Garden' specifically explores entheogenic plants and their potential to expand consciousness. Every plant featured in the book has a rich history of medicinal and ritual use. These plants have enabled humans to probe the mysteries of consciousness, bridging human experiences with a greater sense of the Spirit and facilitating our recognition, acceptance, and engagement with the more-than-human world.



Eleanor Mulhearn - @ELEANOR_MULHEARN
Visual artist working across a range of mediums and processes, including sculpture, installation and experimental animation, to produce works engaging with Enchantment as a core theme. She is the course leader for Illustration course in MMU, Manchester.



Kim Noce - @KIMNOCE
Synergetic, multimodal and mix-media Maker of empathic, interactive and immersive experiences. Director of 19 films screened in more than 500 major international film festivals, winning more than 50 prizes worldwide. She is a course leader for MA Animation at LCC, London.



Ala Nunu - @ALA_NUNU
Award-winning animation director based in Porto. She is a co-director of Oscar-nominated international production cooperative COLA Animation.



Yu Sun - @YUSUNNNNN
Award-winning animation director based in London who is keen to explore the various possibility of the mixed media and how can we tell and understand others' experiences through animation.



Andrew Alexander - @ANDYALEXANDY
Brooklyn based artist and publisher. He runs CRAM books which publishes funny, honest and sad risograph comics and artbooks.



Anna Firth - @TALLGRILL
San Francisco Bay Area-based animator and drawer. Anna teaches animation at California College of the Arts.



Sofya Baychuk - @AWHALER
Animation artist and a plant lover based in Angouleme, looking for stories behind it all.



Dominica Harrison - @NICAHARRISON
BAFTA-nominated director who exercises play as the main approach to creating work. She works interdisciplinary, between animation, illustration, printmaking and installation to create immersive and multidimensional art. She lectures Illustration at MMU and MA Animation at LCC.



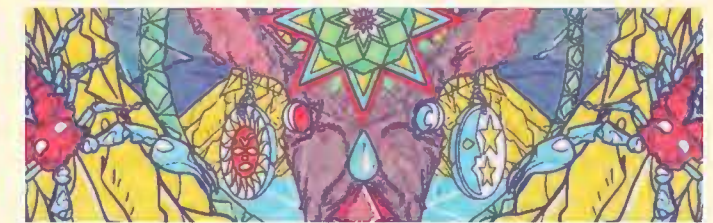
Mo Riza - @MONDOMATIC
New York City based street artist. He works across the mediums of drawing, sculpture and photography.



Dal Park - @DAL_PARK
Animation director and illustrator based in Berlin whose work uses humour and odd characters to make sense of the everyday life.



Christopher Rainbow - @CHRISTOPHER_RAINBOW
Artist and illustrator with a particular interest in visual storytelling, and is the publisher of the Risograph comics press, Sputnikat based in Moscow.



Ben Thompson - @BYE.BT
Multidisciplinary artist, illustrator, lecturer and occultist, utilising *The Work* as a conduit for their personal Magickal practice. They lecture in Animation + Illustration at the University of Bolton.

Preview

[Start of the book]



Preface

PREFACE:

'In The Garden: Giggles In The Greenery' is the inaugural book of the graphic anthology 'Anima Mundi', exploring inter-species communication between humans, plants, fungi, and minerals.

The inspiration for this anthology arose from my ongoing exploration of the more-than-human world. Until very recently, humans have arrogantly considered themselves the sole possessors of intelligence. However, decades of scientific advancements in biological and behavioural sciences, alongside a growing appreciation for non-western systems of knowledge, have proven that it is not the case. We are finally starting to embrace the existence of many other entirely different to our own forms of intelligence, communication, and ways of being.

'Anima Mundi' books are artefacts that draw viewers' attention to diverse and wonderful life within more-than-human-world. The protagonist, Seraphina, who travels the Four Kingdoms represents open-minded curiosity and respect when encountering other lifeforms. We have much to learn from this world around and ancient and sacred knowledge can be valuable tools for understanding and connecting with our surroundings. As we navigate an era dominated by information saturation, a mental health crisis and pressing environmental issues, we need to urgently re-imagine our relationship with nature.

'In The Garden' specifically explores entheogenic plants and their potential to expand consciousness. Every plant featured in the book has a rich history of medicinal use, acting as guides, helpers, and teachers for those seeking knowledge. These plants have enabled humans to probe the mysteries of consciousness, bridging human experiences with a greater sense of the Spirit and facilitating our recognition, acceptance, and engagement with the more-than-human world.

Seraphina invites you to join her as she wonders through the garden, probing and pondering the flora that our ancestors have utilised as folk medicines and ritual sacraments, helping them to understand that the world extends beyond humanities narrow field of perception. Seraphina recognises that expanding our perception of consciousness allows us to see ourselves as part of the larger organic whole, where all life is woven, interconnected and infinite. She hopes that as you follow her journey, you too will contemplate this perspective.

Let this book be an invitation to wonder and Seraphina be a guide for the curious.



Dominica Harrison.

The visual essays presented in this book are a depiction of in-depth historical, mythological, and spiritual research into the origins of each medicine. The result is designed to entertain and inform - not provide medical advice.

'In The Garden' is initiated, curated, and designed by Dominica Harrison.
Featuring work by Yu Sun, Andy Alexander, Kim Nooe, Ben Thompson, Sofya Baychuk, Ala Nunu, Dal Park, Chris Rainbow, Mo Riza, Eleanor Mulhearn, Anna Firth and Dominica Harrison.
Inlay pattern by Ben Thompson.



Hi! ♡

RISO-PRINTED IN 4 COLOURS ON 100% RECYCLED 160 GSM AND 6. F SMITH COLORPLAN PAPER
 SUPPORTED BY MANCHESTER METROPOLITAN UNIVERSITY AND UNIVERSITY OF ARTS LONDON
 PRINTED AT MANCHESTER METROPOLITAN UNIVERSITY
 AN OCCULT COMMODITY
 DH2024OC001

PRELUDE DOMINICA HARRISON 1	NYPHAEAE NOUCHALI (BLUE WATER LILY) 3 ELEONOR MULHEARN	IPOMOEA (MORNING GLORY) 7 ANDREW ALEXANDER	ANADENANTERA COLUBRINA (CEBIL) 11 MO RIZA
	DATURA STRAMONIUM (THORN APPLE) 15 KIM NOCE	ATROPA BELLADONNA (BELLADONNA) 19 ANNA FIRTH	BANISTERIOPSIS CAAPI + PSYCHOTRIA VIRIDIS (CAYAHUASCA) 23 DAL PARK
	DUBOSIA HOPWOODII (PITURI) 27 ALA NUNU	PAPAVER SOMNIFERUM (POPPY) 31 SOFYA MELEHOVA	ECHINOPSIS PACHANOI (SAN PEDRO) 35 CHRISTOPHER RAINBOW
MANDRAGORA OFFICINARUM (MANDRAKE) 39 YU SUN	CANNABIS (MARIJUANA) 43 DOMINICA HARRISON	LOPHOPHORA WILLIAMSII (PEYOTE) 47 BEN THOMPSON	51 DOMINICA HARRISON EPILOGUE

CONTENTS:

CONTENTS:



Datura said:

women were doctors
without degrees
barred from books
learning from each
other
called wise women
by the people,
witches
by the authorities.
healing herbs
is your heritage
your birthright.



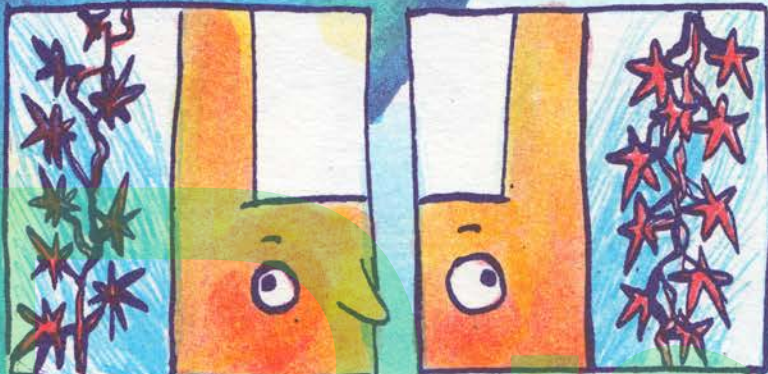
BY THIS POINT, SERAPHINA WAS FEELING WEARY AFTER HER ENCOUNTERS



SHE LAY DOWN FOR A NAP



THAT'S WHEN SHE HEARD THE WHISPERS



IN HER LEFT EAR

IN HER RIGHT EAR

THEN SHE SAW THEM



WE ARE THE DAY AND THE NIGHT



WE ARE THE FIRST AND THE LAST

YOU ARE SO BEAUTIFUL!

WILL YOU SHOW ME THE WAY?

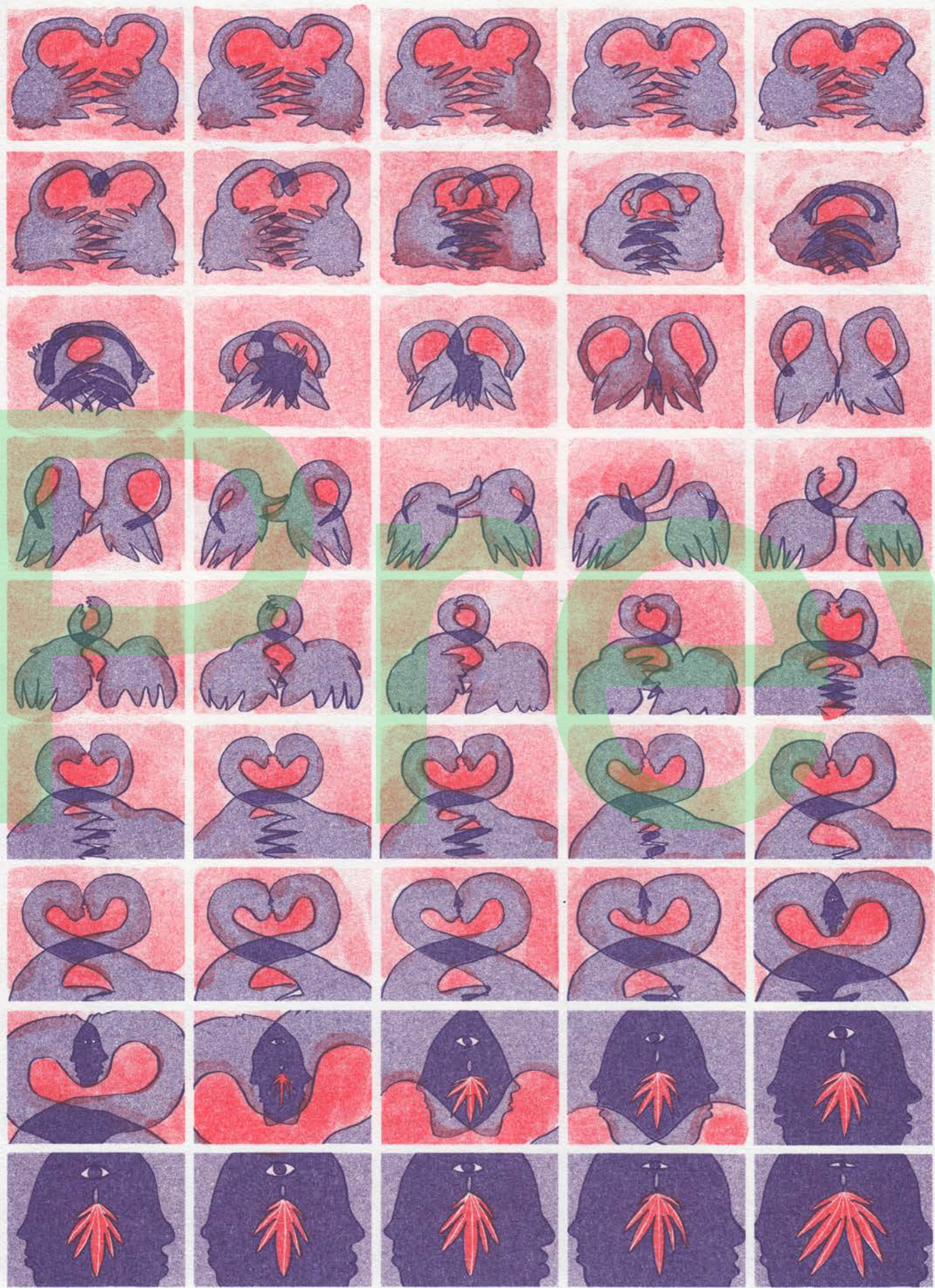
COME DANCE WITH US


YOU WILL FIND YOUR WAY

WHEN YOU WILL FIND YOUR BALANCE



MARIJUANA





Alienation
from nature
and the loss of the
experience of being part
of the living creation is the
greatest tragedy of our materialistic
era ... Therefore I attribute absolute
highest importance to consciousness change.
... I am convinced that these soul-opening,
mind-revealing substances will find their appropriate
place in our society and our culture.

- Dr. Albert Hofmann

325

Anima Mundi #1
In The Garden

12 prophetic plants
12 artists
1 book
1 film



view

[End of the book]

**IN THE GARDEN:
GIGGLES IN THE GREENERY
EXAMPLE SPREADS**



**IN THE GARDEN:
GIGGLES IN THE GREENERY
EXAMPLE SPREADS**