

# Simson&Volley

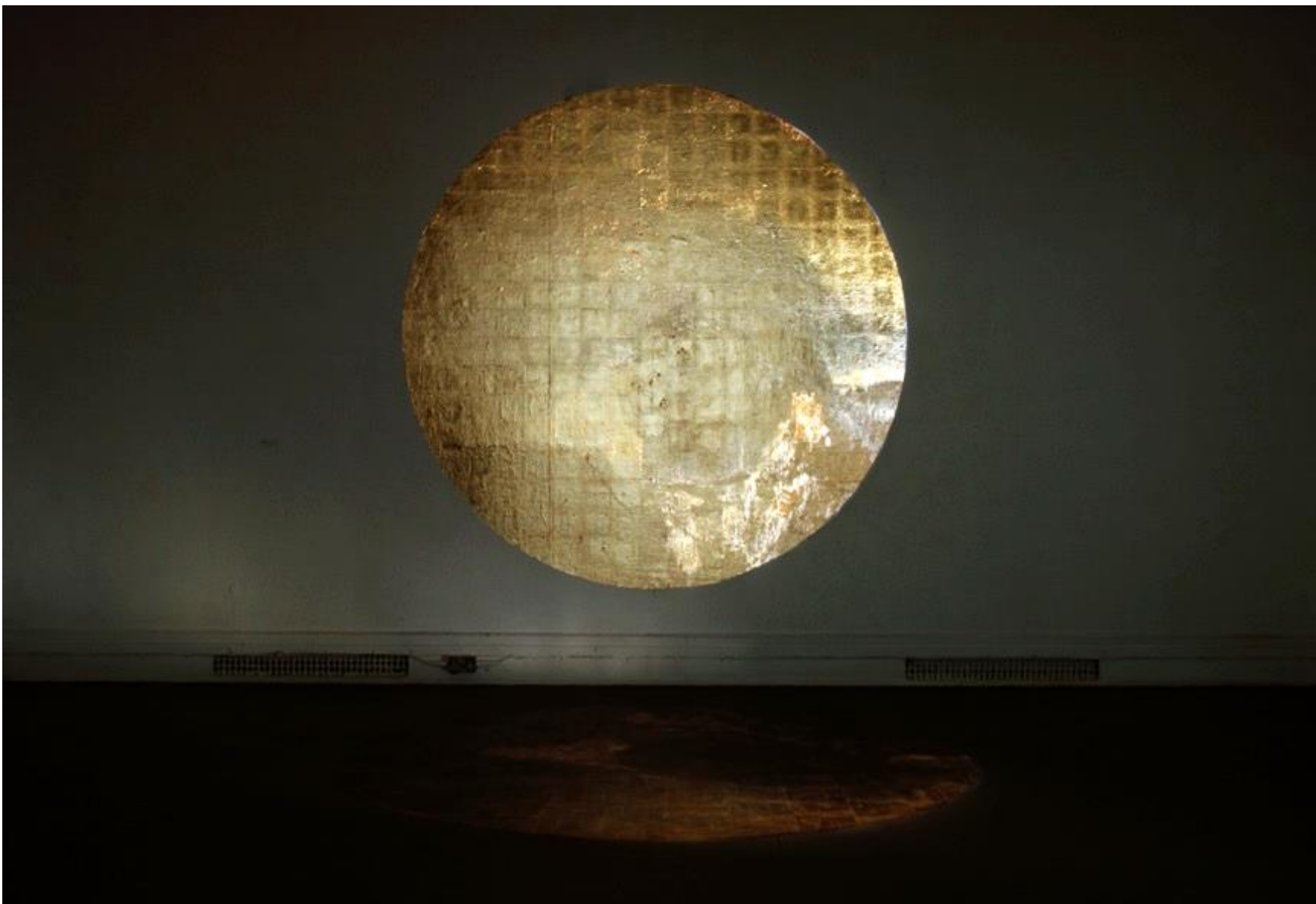
Gold, Silver and Blue (or the Sun, the Moon and the Night Sky)

Planets 360 Workshop

5 May 2021

@jo.volley

@henrietta\_simson



*Gold and silver.... They are the earthly reflections of the sun and moon and thus also of all realities of spirit and soul which are related to the heavenly pair.*

Titus Burkhardt, *Alchemy*, 1967

*Ich Bin Der Welt Abhanden Gekommen (I am lost to the World)*

Simson&Volley, 2009

Site specific installation, Slade Research Centre, UCL

Metal leaf on alizarin crimson, OHP projection, excavated floor



*Burnished gold leaf asserts the density and the preciousness of the panel, creating the illusion that the sacred image is presented on a support of solid gold. Not only does this deny any notional interval between actual surface and illusory forms, but it also overwhelms any spatial implications of pictorial light by brilliance of surface.*

Paul Hills, *The Light of Early Italian Painting*, 1987



*Orbit*

Simson&Volley, 2013

Site specific installation, portico, UCL

Metal leaf on wooden benches

2.5m D



*Orbit*  
In installation with *Constellations*



*Orbit*  
In installation with *Constellations*



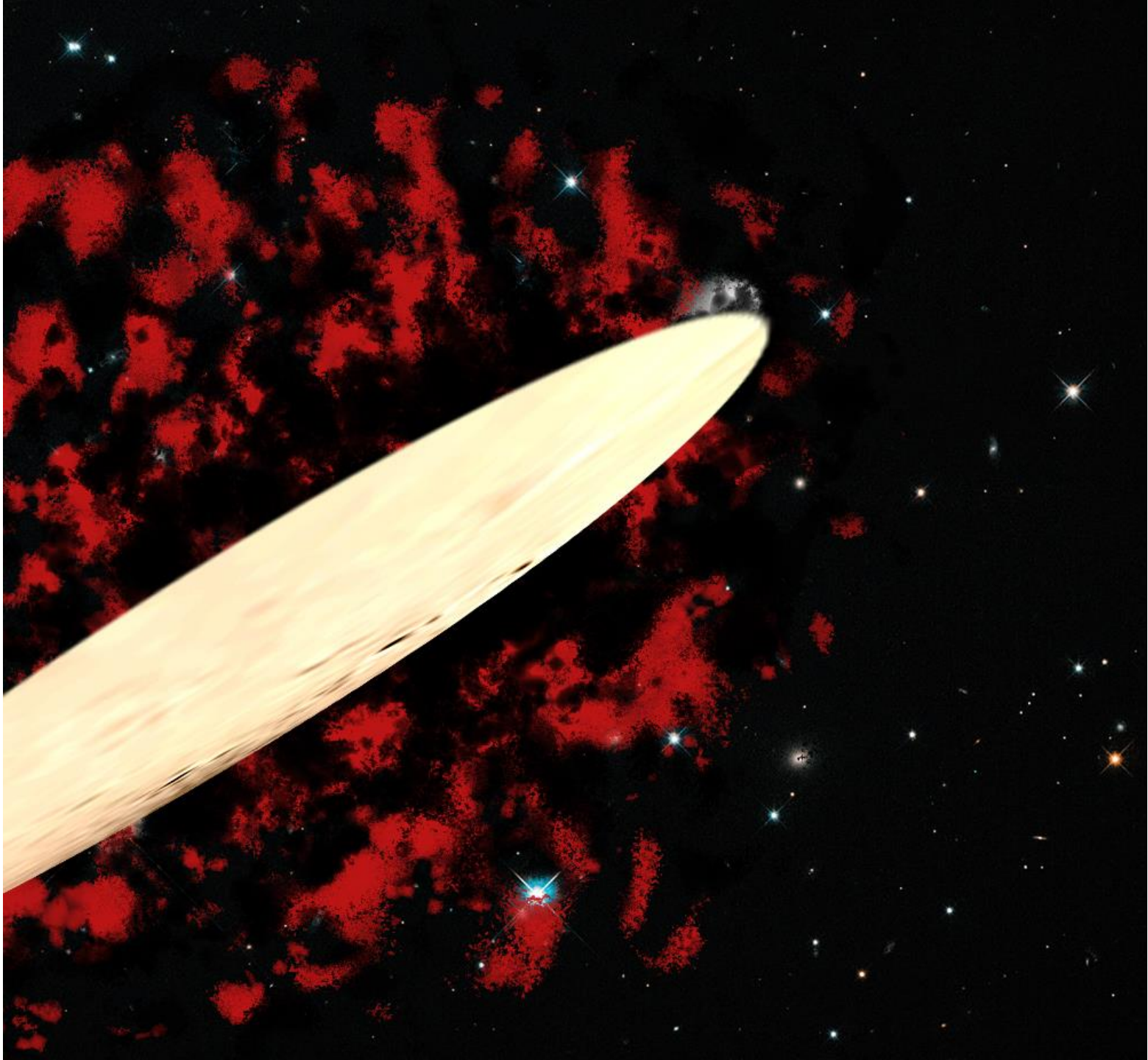
*Orbit*

In installation, evening shot from inside library



*An Everywhere of Silver,  
With Ropes of Sand  
To keep it from effacing  
The Track called Land.*

Emily Dickinson *An Everywhere of Silver*, c.1864



Sketch for *Ison*  
Simson



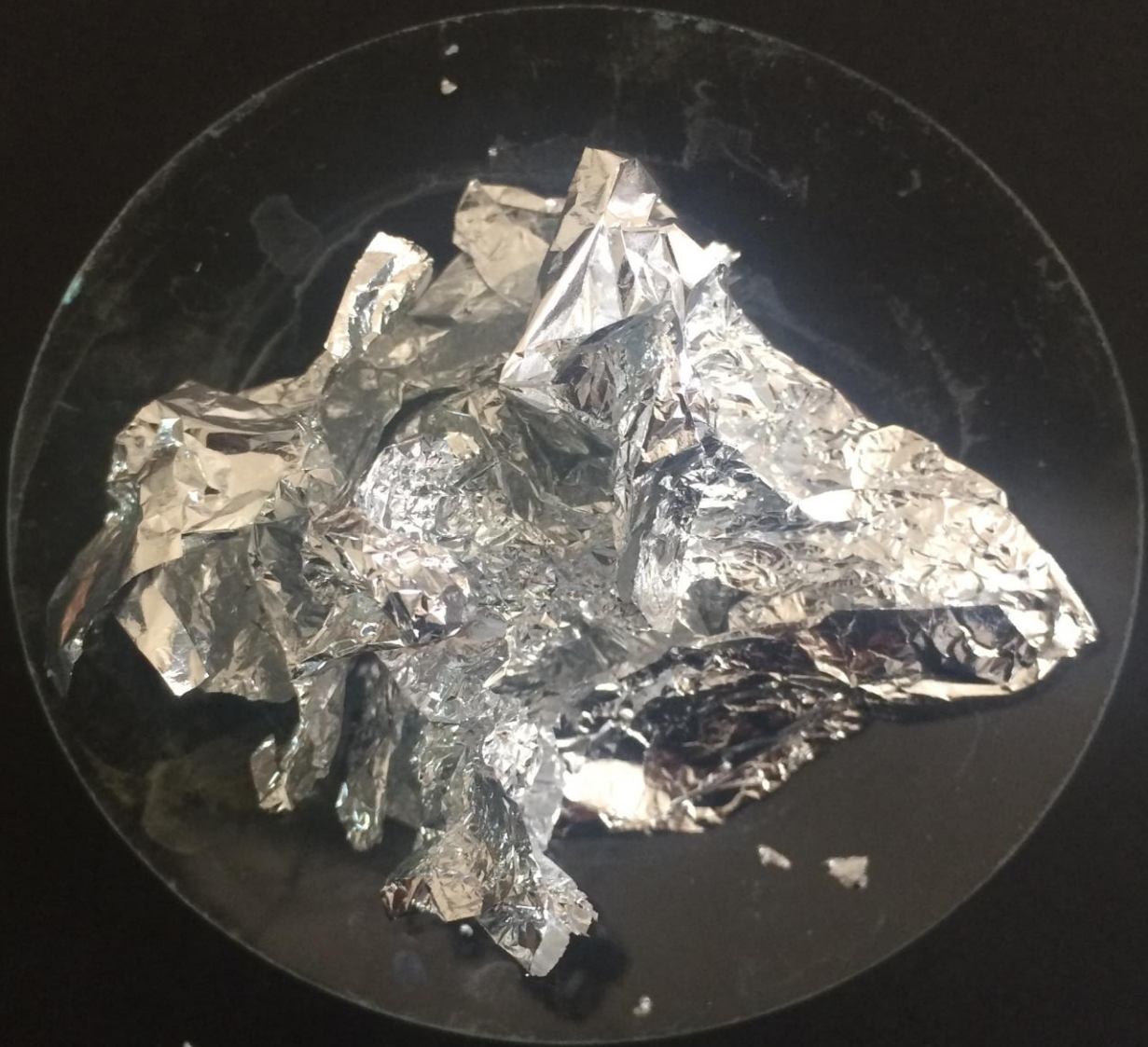
*Ison*  
Simson&Volley, 2013  
South Cloisters, UCL  
Metal leaf on printed paper  
7 x 5 feet



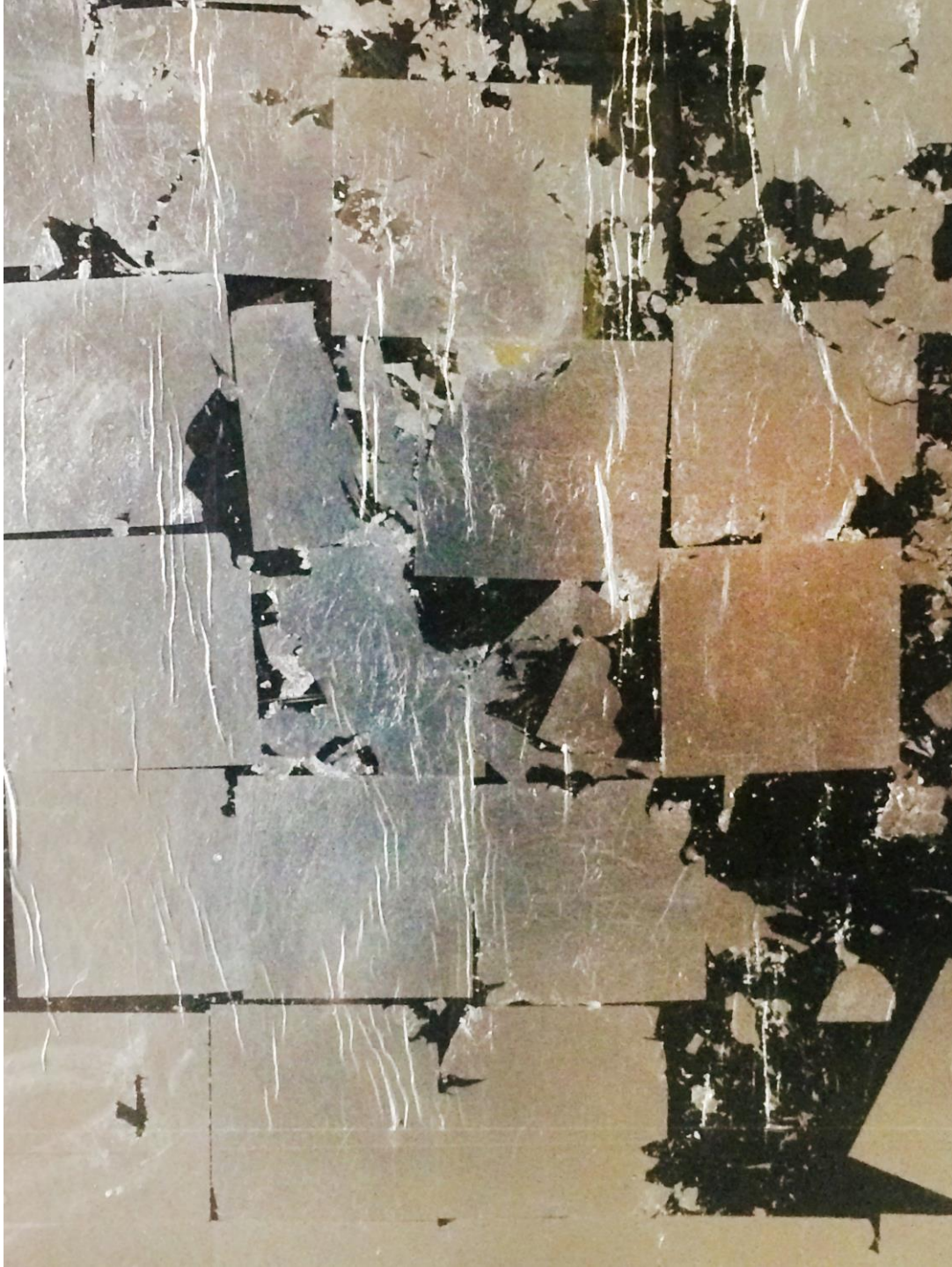
*Ison*  
Simson&Volley, 2013  
South Cloisters, UCL  
Metal leaf on printed paper  
7 x 5 feet



*Image of Ison*  
Hubble Space  
Telescope, 2013



Sketch for *Ison*  
Volley



*Ison*  
Simson&Volley, 2013  
Detail



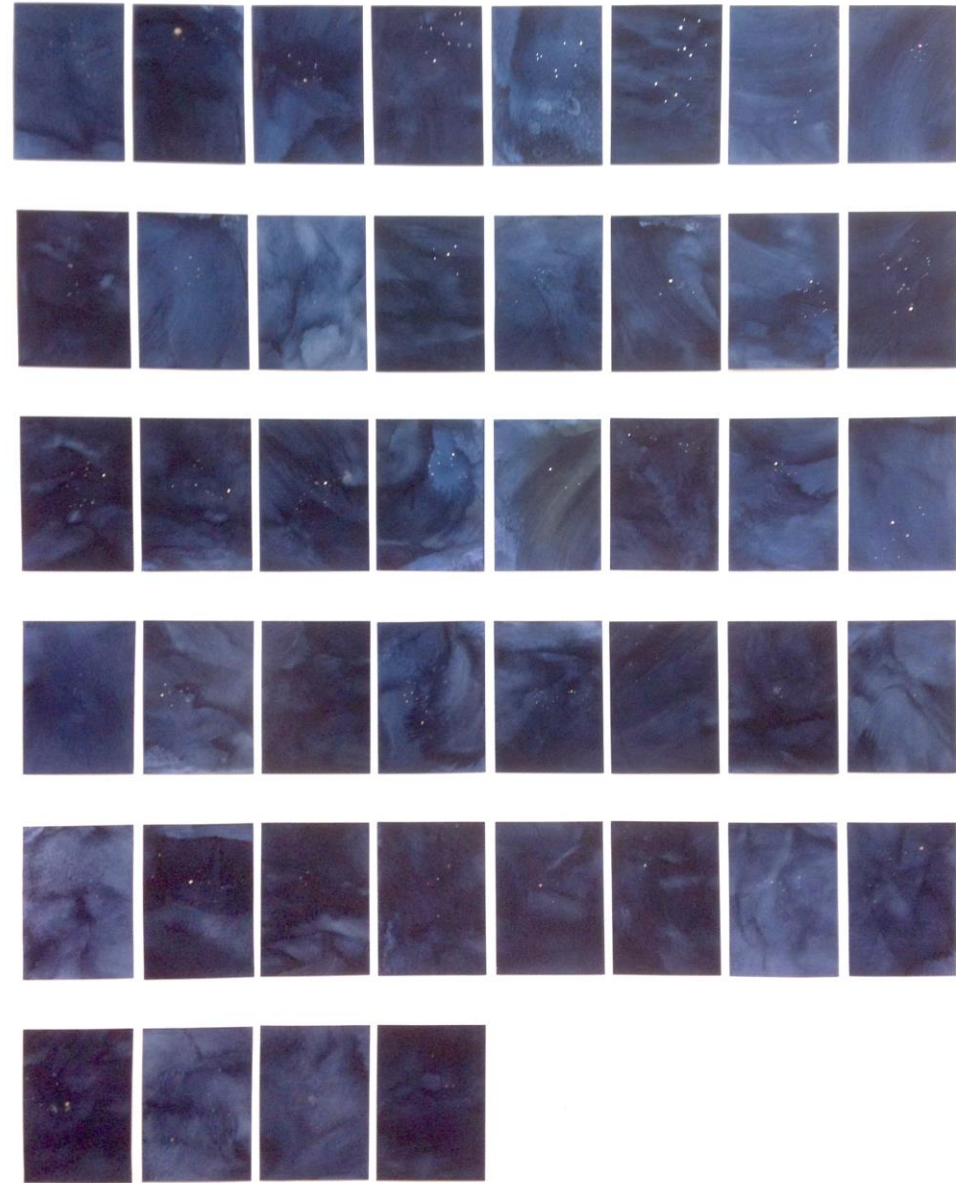
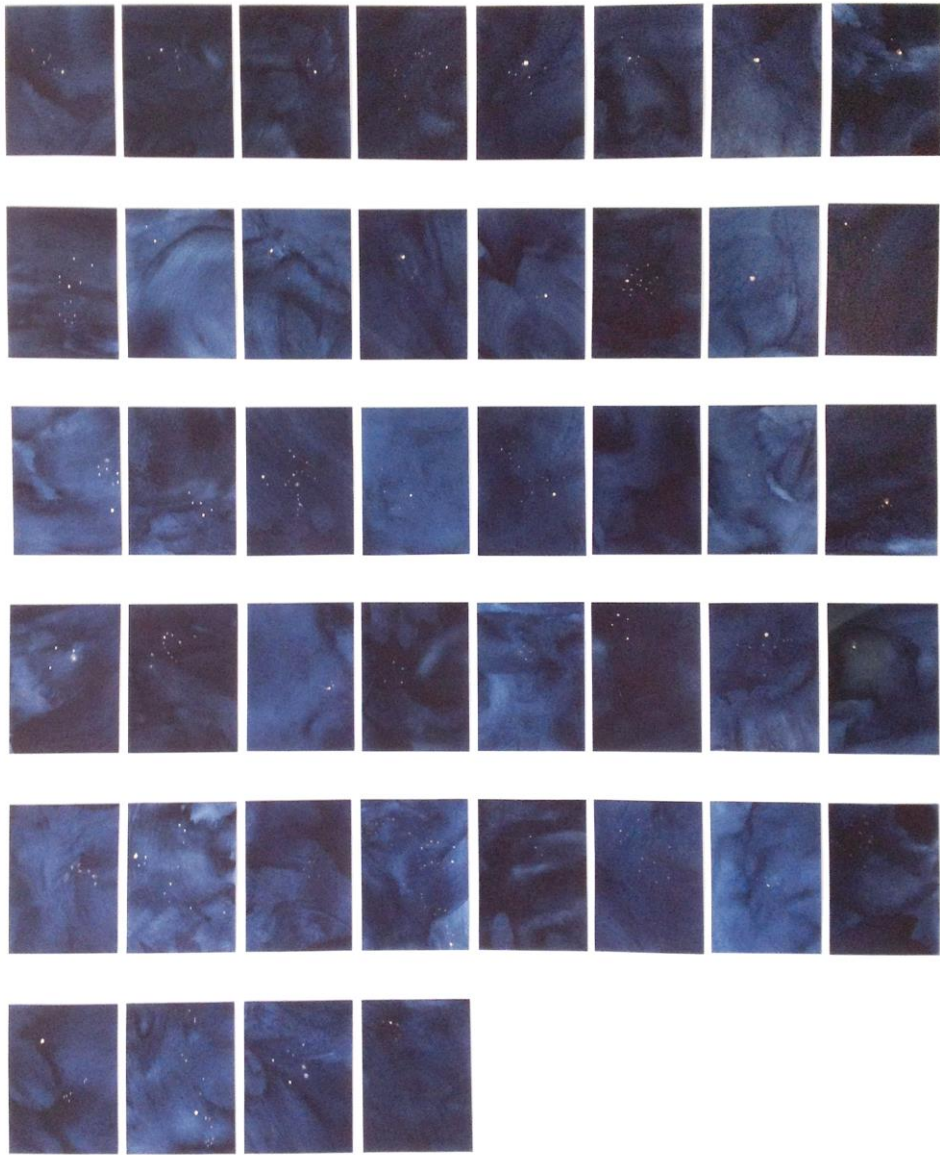
*Ison*  
Simson&Volley, 2013  
Detail



*Ison*  
Simson&Volley, 2013  
Detail

*We love to contemplate blue, not because it advances to us, but because it draws us after it.*

Johann Wolfgang von Goethe, Theory of Colours, 1810



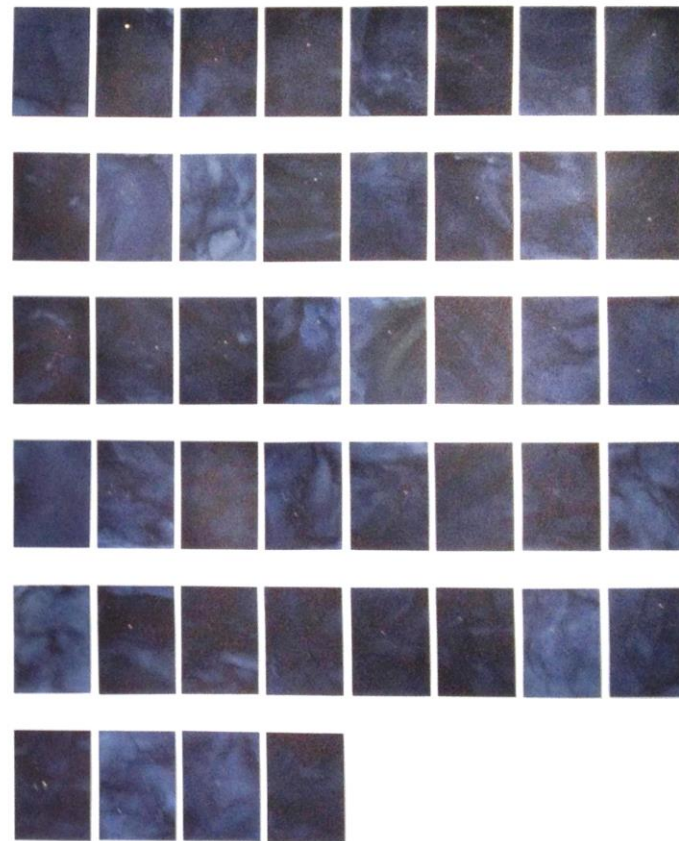
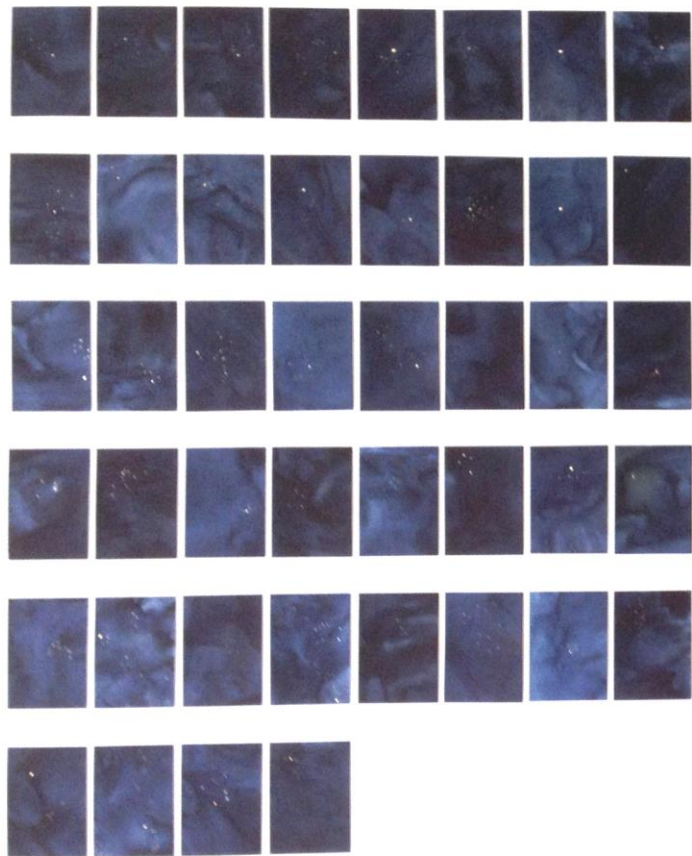
*Constellations*  
Simson&Volley, 2013  
Metal leaf and paper  
2 x 7 x 5 feet



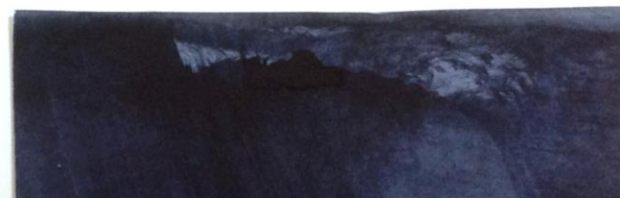
*Constellations, legend detail*



*Detail from Taurus*



*Constellations*  
Simson&Volley, 2013  
Metal leaf and paper  
2 x 7 x 5 feet



*Constellations, detail*



Lapis Lazuli



*Constellations*  
Simson&Volley, 2013  
Metal leaf and paper  
2 x 7 x 5 feet

*If the world were clear, art would not exist. Expression begins where thought ends.*

Albert Camus, *The Myth of Sisyphus*, 1942