

A photograph of a hand with a blue ring and a heart-shaped pendant on a striped background. The hand is positioned on the right side of the frame, with a blue ring on the ring finger. A heart-shaped pendant is visible on a chain in the upper left. The background consists of vertical stripes in shades of blue, green, and yellow. The text "scentsory design™" is overlaid in white on the lower left.

scentsory design™

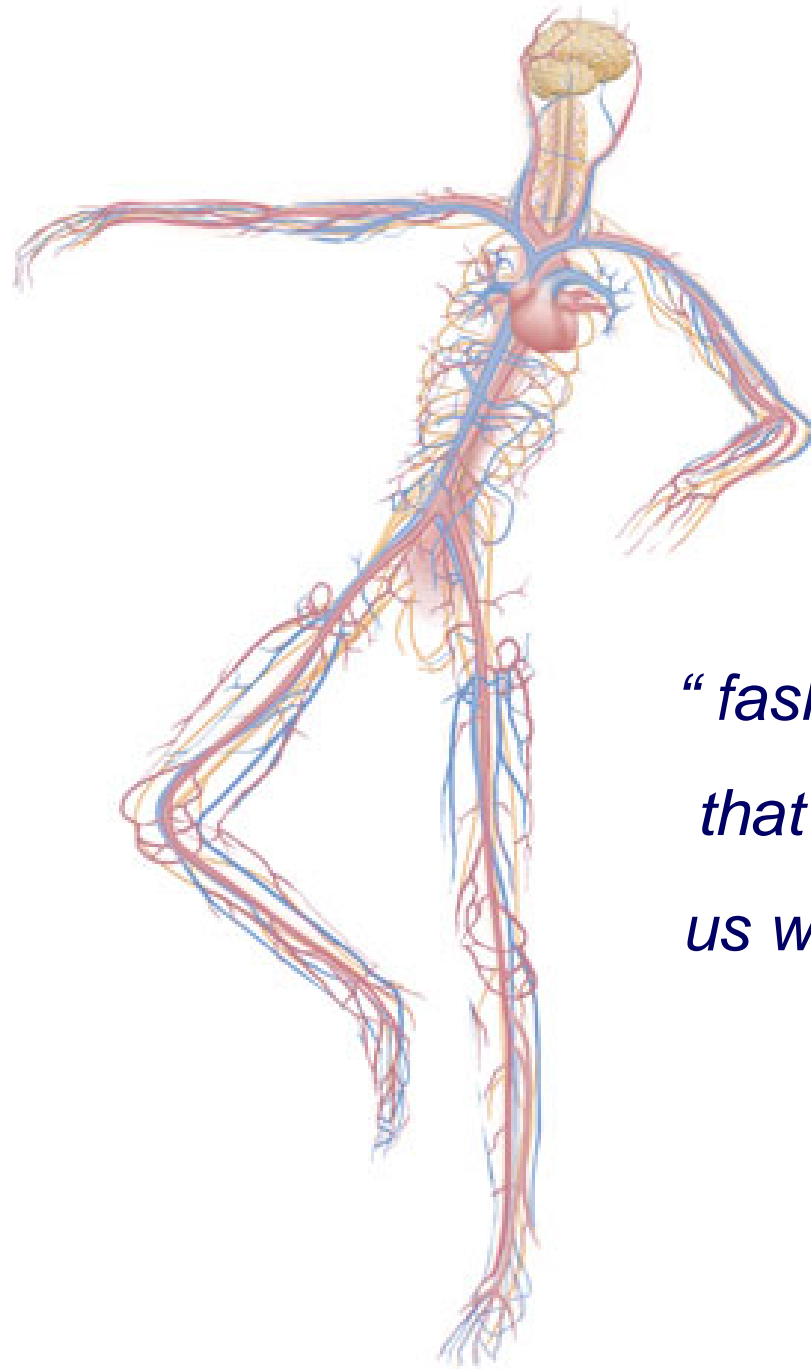
Dr Jenny Tillotson

user_mode = emotion + intuition in art + design, 9 - 11th May 2003, Tate Modern, UK

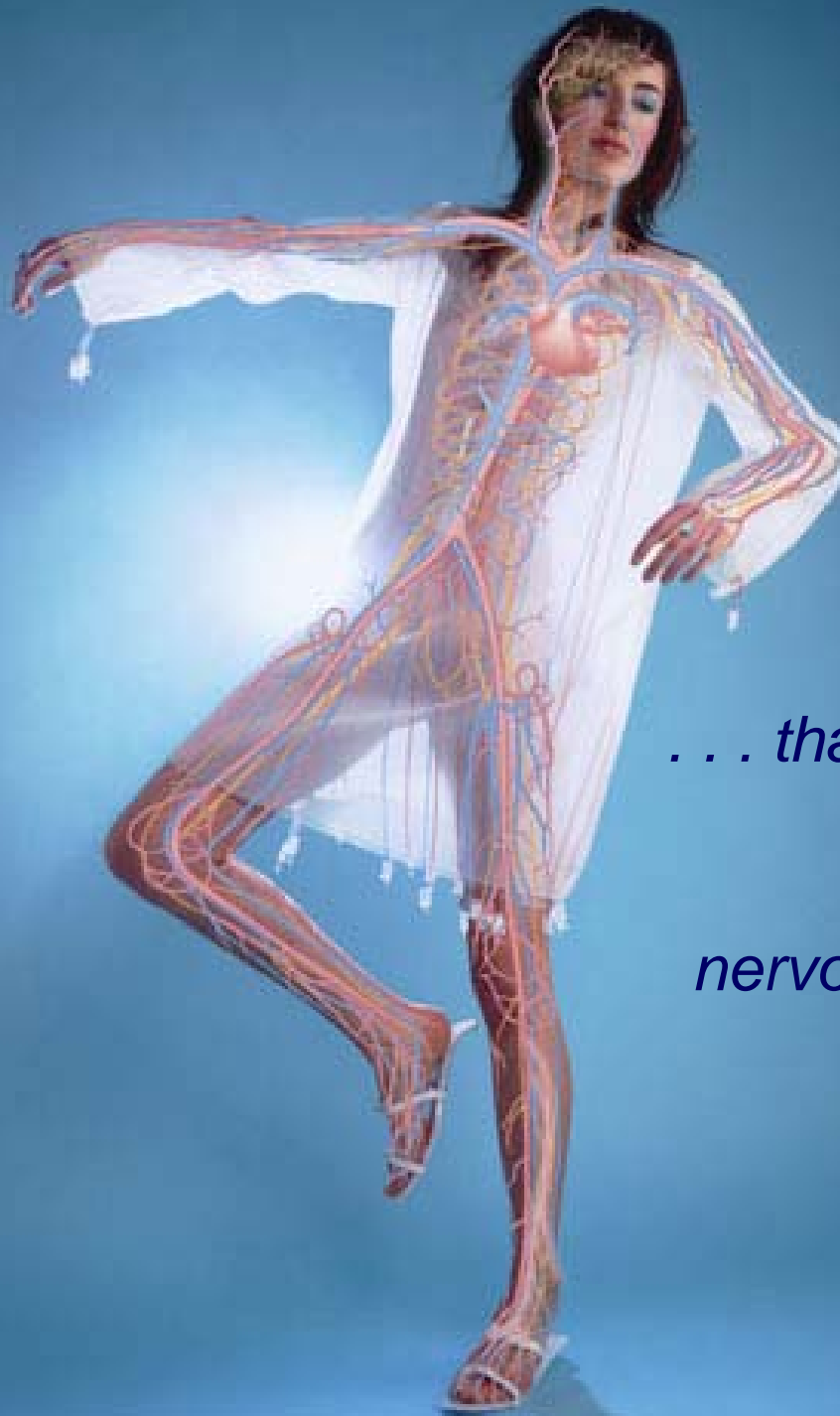


smart second skin

scentory design™



*“fashion is the recognition
that nature has endowed
us with one skin too few . . .*



*. . . that a fully sentient being
should wear its
nervous system externally”*

J G Ballard

A heart-shaped pendant, possibly made of metal or glass, hangs from a thin chain. The background consists of diagonal stripes in shades of purple, blue, and pink. The text "heart of glass" is overlaid in the bottom left corner.

heart of glass

sensitive dress

re-cabling fashion



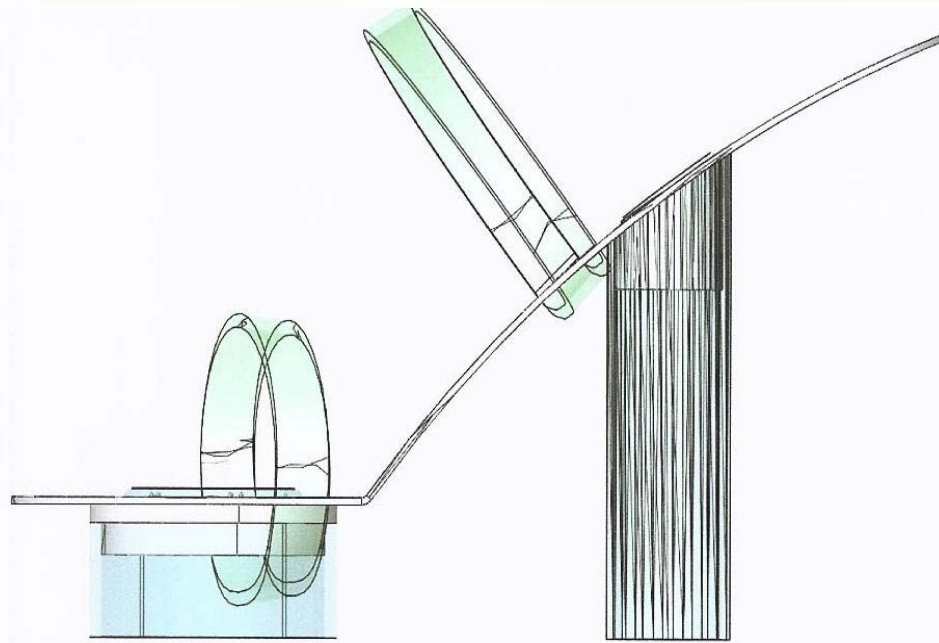
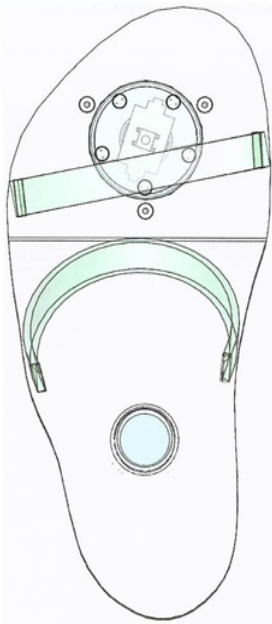
adeline andre
PARIS



clothes that make scents

sensitive fashion

sensitive shoes

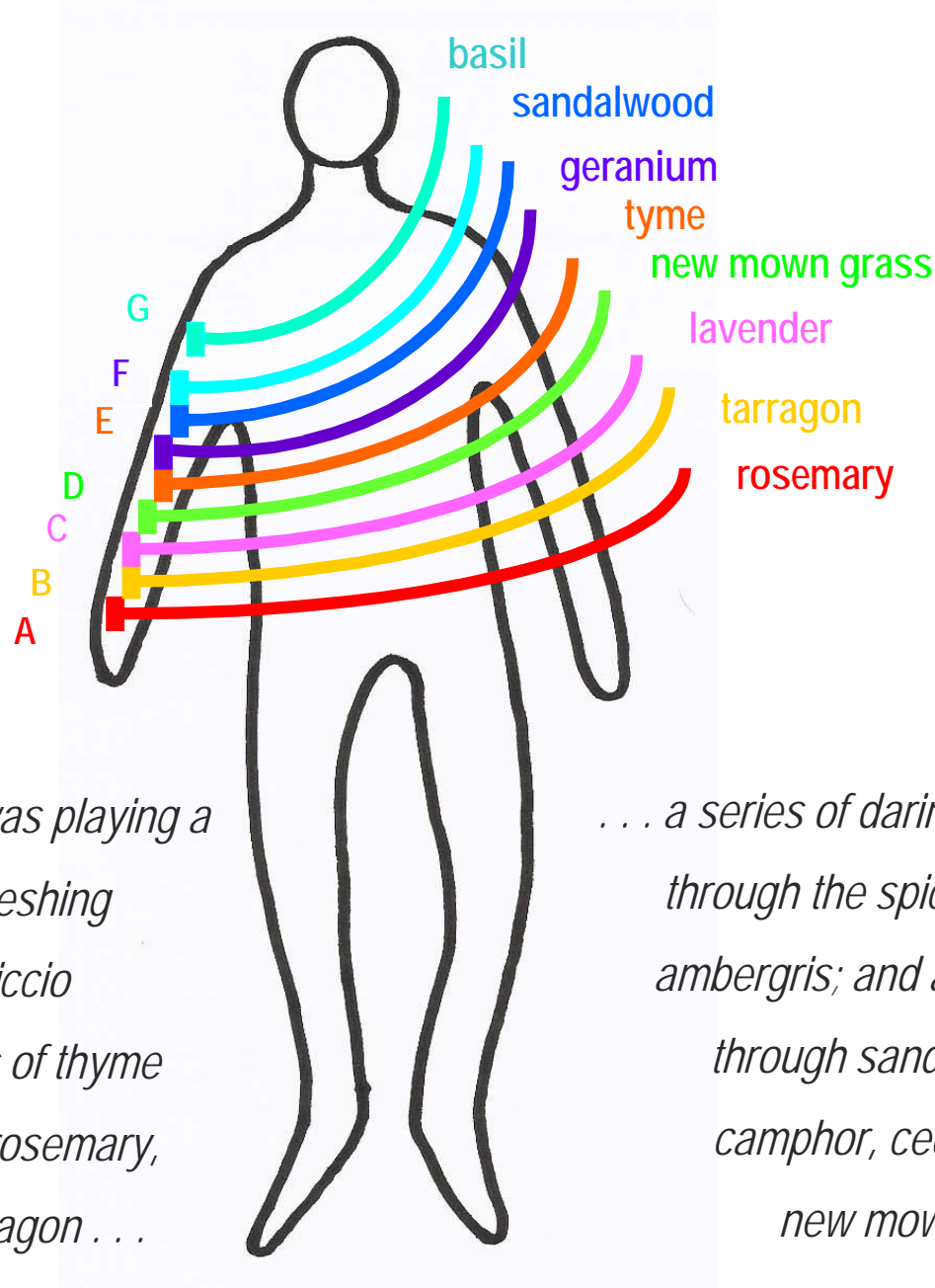


'Phoebe's shoes' by Steve McIntyre



wellness wonder whirl

... a science fashion story



*The **scentOrgan** was playing a
delightfully refreshing
Herbal Capriccio
rippling arpeggios of thyme
and lavender, of rosemary,
basil, myrtle, tarragon . . .*

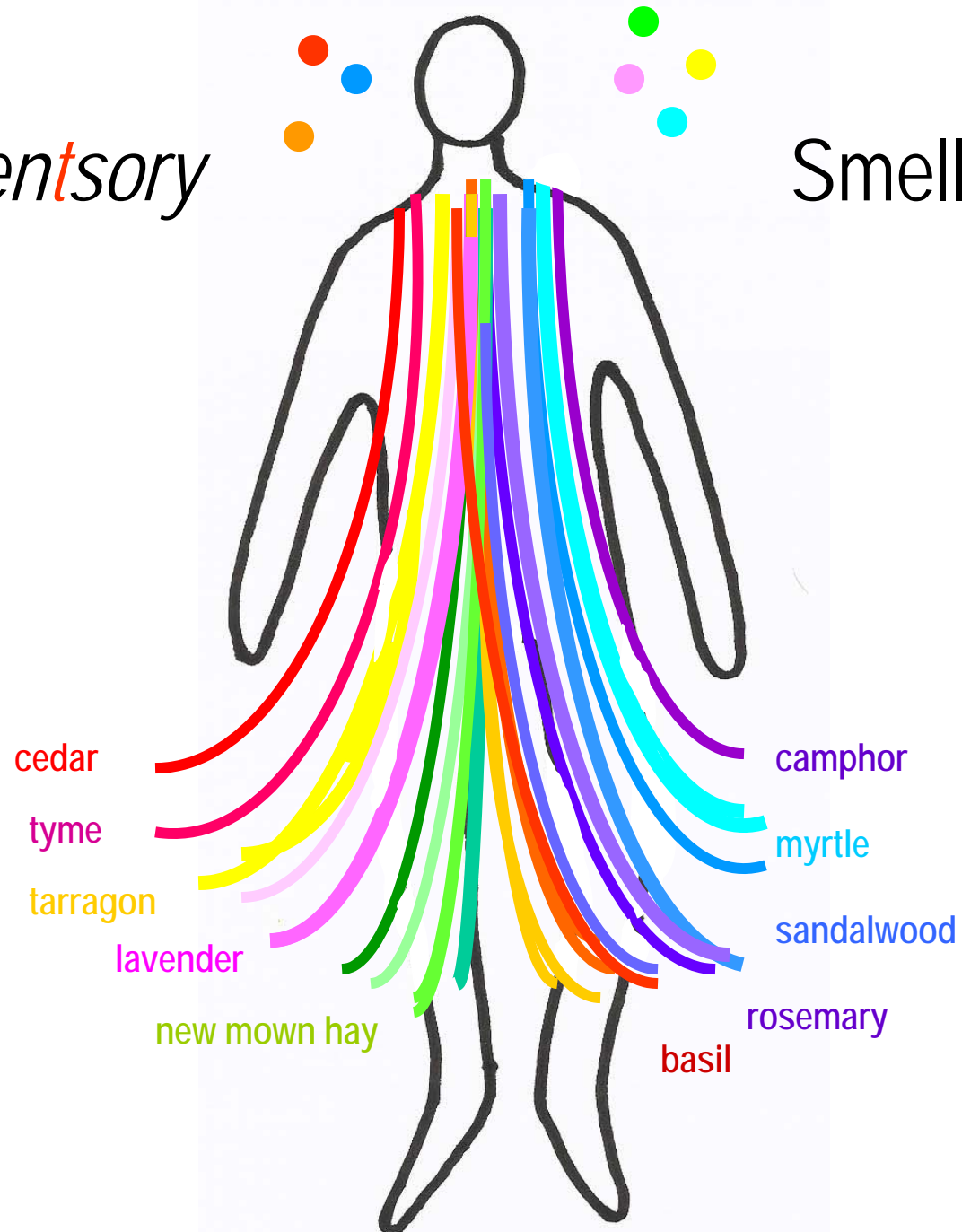
Aldous Huxley

*. . . a series of daring modulations
through the spice keys into
ambergris; and a slow return
through sandalwood,
camphor, cedar and . . .
new mown hay*

Brave New World

Scentsory

Smell Bubble



pick-me-up

feels good

sooth

confidence

glowing

bright

energise

caring ♥ chameleon

dreamy sleep

happiness

'massage'

relaxation

self esteem

healing

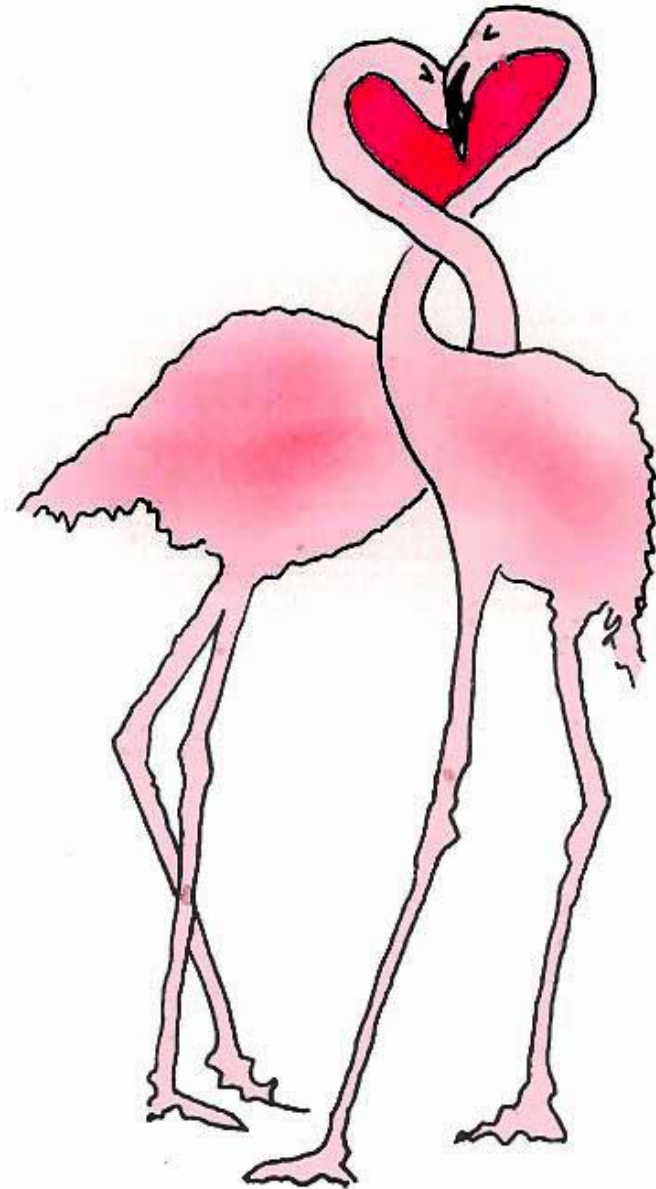
stimulate



"Hug me till you drug me"

Brave New World.

fashion emotion





flacon de sens

6^{xx} sense
essence



aroma rainbow

