

Creative Portfolio

Hormazd Narielwalla

2008

May: Launch of *Dead Man's Patterns*, artist's book.

2009

Oct: *A Study On Anansi*, solo show, Paul Smith Gallery, London (sponsored).

2010

March: *Markt*, group show, Lincoln Centre, New York, curated by Diane Pernet (ashadedviewonfashion.com).

April: *Drawing Out*, group show, Royal Melbourne Institute of Technology, Australia.

Oct: *Hat-Parade*, solo show, Bernstock Speirs, London.

Art Below, official billboard display, Old Street Tube station, London.

2011

April: *Fairy-God, Fashion-Mother*, 4Fashionshake III, Athens.

Drawing and the body, KG52 Gallery, Stockholm, Sweden alongside Helen Storey, Lucy Orta and Charlotte Hodes. Work appeared on the cover of the exhibit brochure.

July: Launch of *The Savile Row Cutter*, published by Bene-Factum, London.

Sept: *Block Party*, Crafts Council, England, national touring exhibit with work featured alongside Yinka Shonibare, Charlotte Hodes, Lucy Orta, Simon Thorogood and Shelley Fox.

Nov: *Fairy-God, Fashion-Mother*, solo show, Modern Pantry, London.

2012

Jan: *Dead Man's Patterns Memento Mori*, solo show at Sheridan&Co, London.

Feb: *Imprint*, group show, Centre of Possible Studies, Serpentine Gallery, London.

April: Showcase, Harvey Nichols, Knightsbridge, London.

May: Independent stall, The Other Art Fair, funded by SEE, University of Arts, London.

July: *Summer Salon*, group show, Islington Arts Factory, London.

Dec: *Lady Gardens*, solo show, Long White Cloud, London.

2013

Feb: *Love Nest*, solo show, Margaret Street Gallery, London.

Pap(ler) Fashion, Galerie Stihl, Waiblingen, Germany produced by ATOPOS cvc in association with Barbican, London.

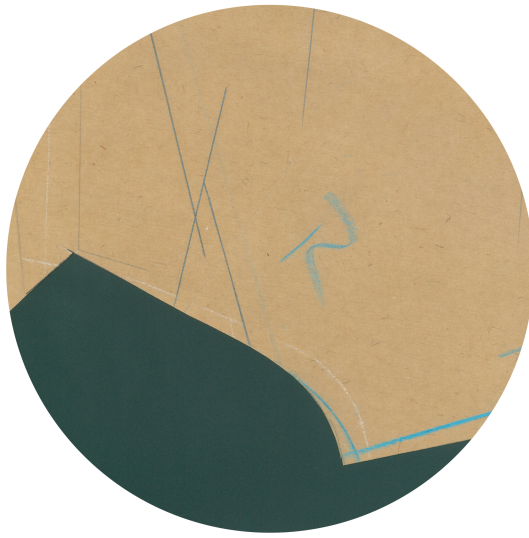
April: *UNIT 3*, group show, Degreeart, Vyner Street, London.

May: Project Space, *COLLECT 13*, by Crafts Council, Saatchi Gallery, London.

Nov: *Connect*, group show, A-Side B-Side gallery, London

2014

Jan: *Le Petit Echo De La Mode*, solo show, Indian Art Fair 2014, represented by Birla Academy of Art, Kolkata.



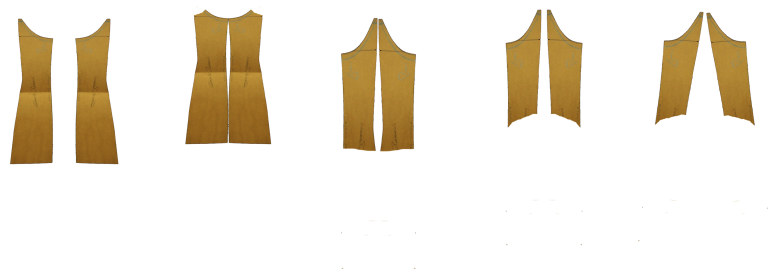
Dead Man's Patterns, 2008, Page 8, 42 x 29.5 cm, artist's book (digital close up of pattern)



Dead Man's Patterns, 2008, Page 11, 42 x 29.5 cm, artist's book (digital collage illustration)



Dead Man's Patterns, 2008, Page 13, 42 x 29.5 cm, artist's book (digital play of pattern)



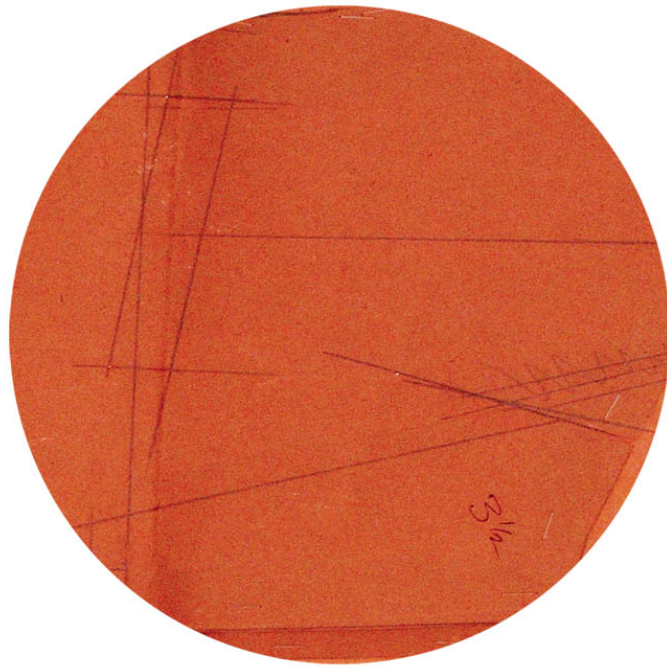
Dead Man's Patterns, 2008, Page 17, 42 x 29.5 cm, artist's book (digital play of pattern)



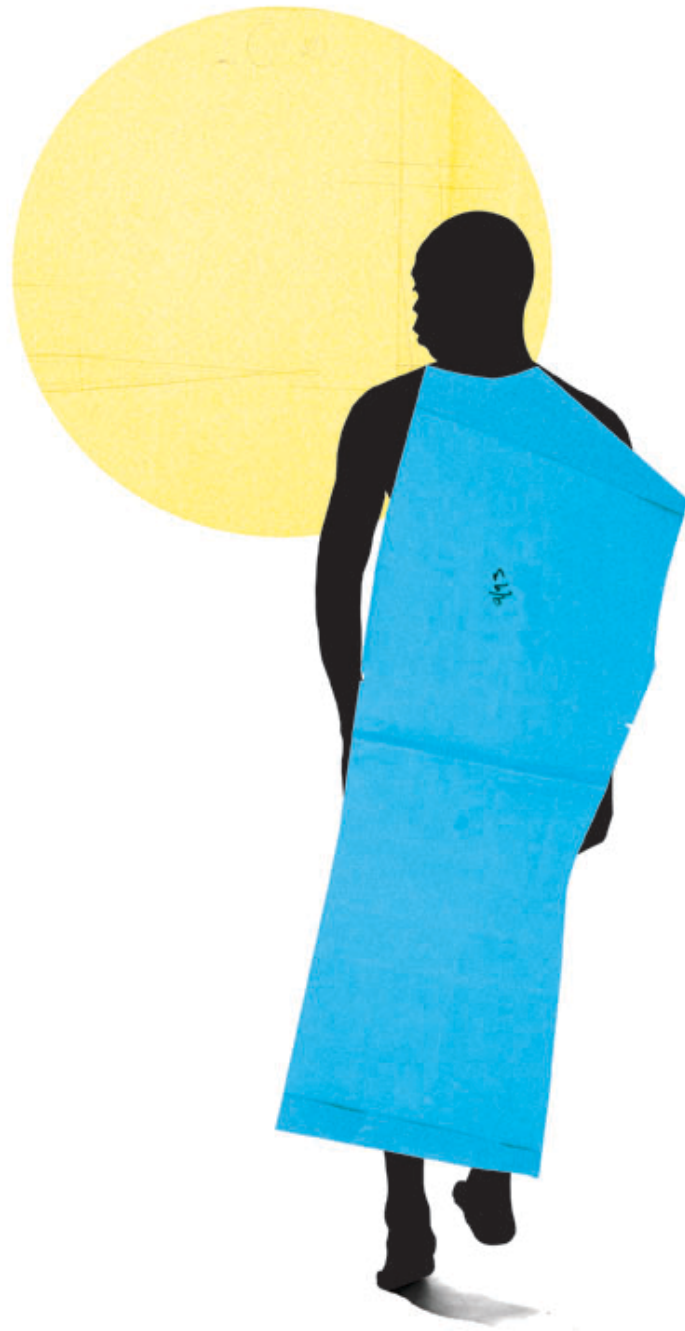
A Study on Anansi, 2009, 80 x 60 cm
(digital illustration using Savile Row bespoke tailoring pattern)



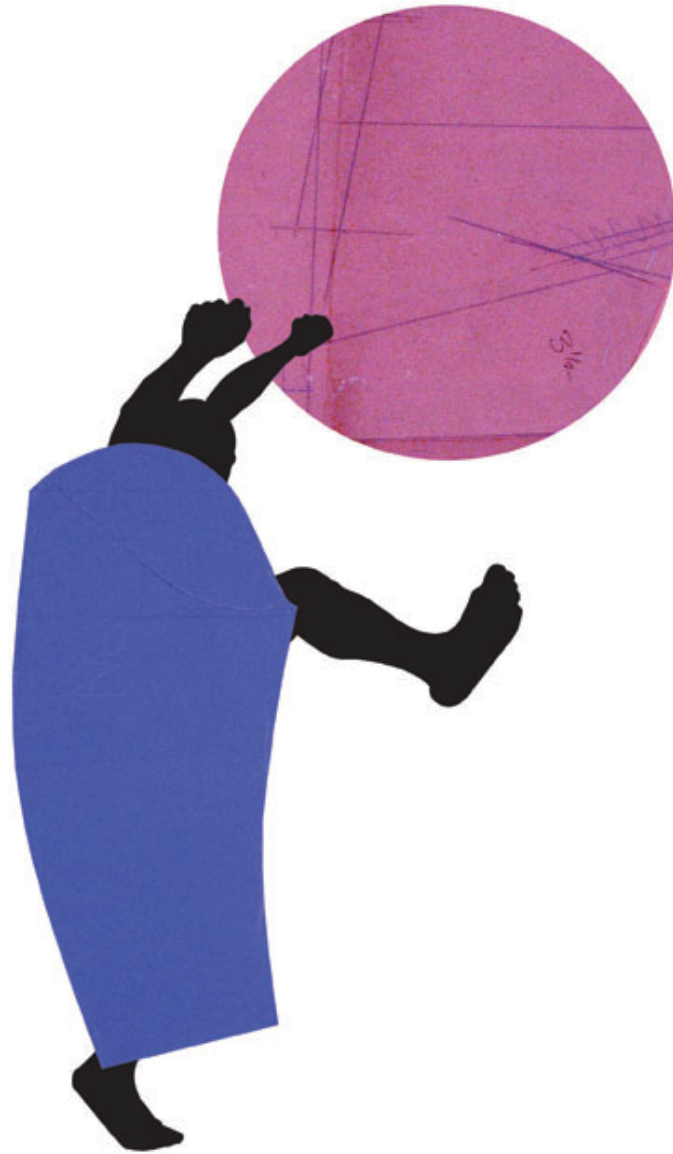
A Study on Anansi, 2009, 80 x 60 cm
(digital illustration using Savile Row bespoke tailoring pattern)



A Study on Anansi, 2009, 80 x 60 cm
(digital illustration using Savile Row bespoke tailoring pattern)



A Study on Anansi, 2009, 80 x 60 cm
(digital illustration using Savile Row bespoke tailoring pattern)



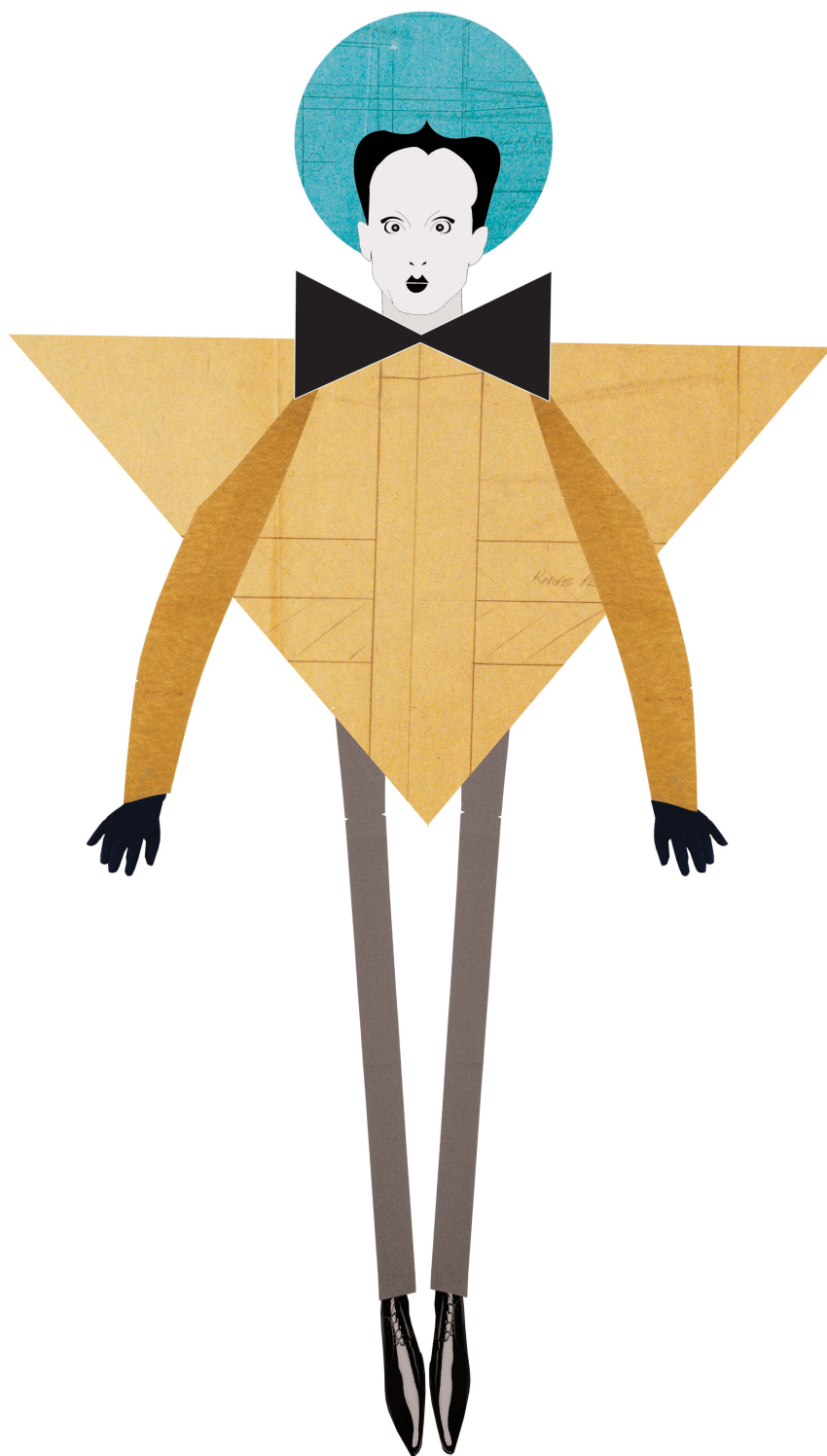
A Study on Anansi, 2009, 80 x 60 cm
(digital illustration using Savile Row bespoke tailoring pattern)



A Study on Anansi, 2009, 80 x 60 cm
(digital illustration using Savile Row bespoke tailoring pattern)



A Little Bit of Klaus, A Little Bit of Homi, 2010, 80 x 60 cm
(digital illustration using Savile Row bespoke tailoring pattern)



A Little Bit of Klaus, A Little Bit of Homi, 2010, 80 x 60 cm
(digital illustration using Savile Row bespoke tailoring pattern)



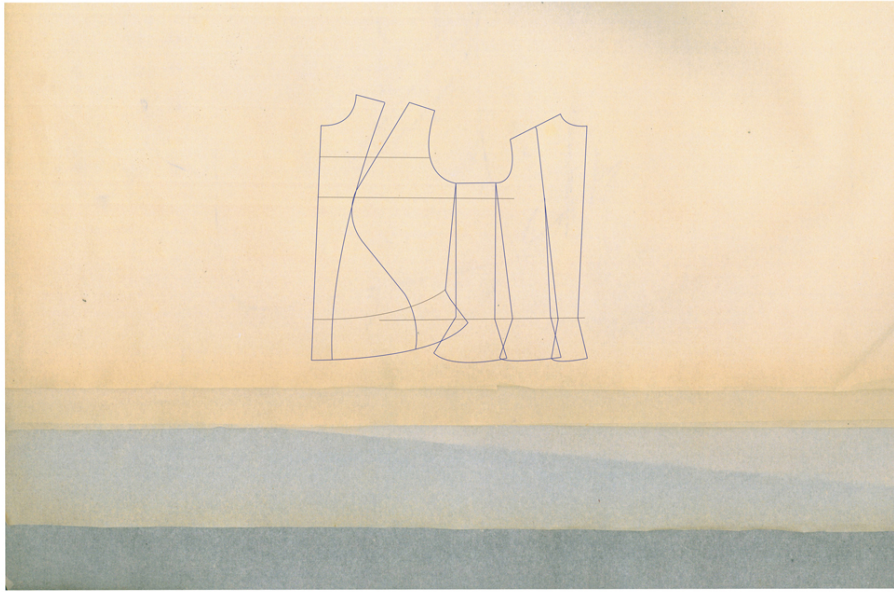
A Little Bit of Klaus, A Little Bit of Homi, 2010, 80 x 60 cm
(digital illustration using Savile Row bespoke tailoring pattern)



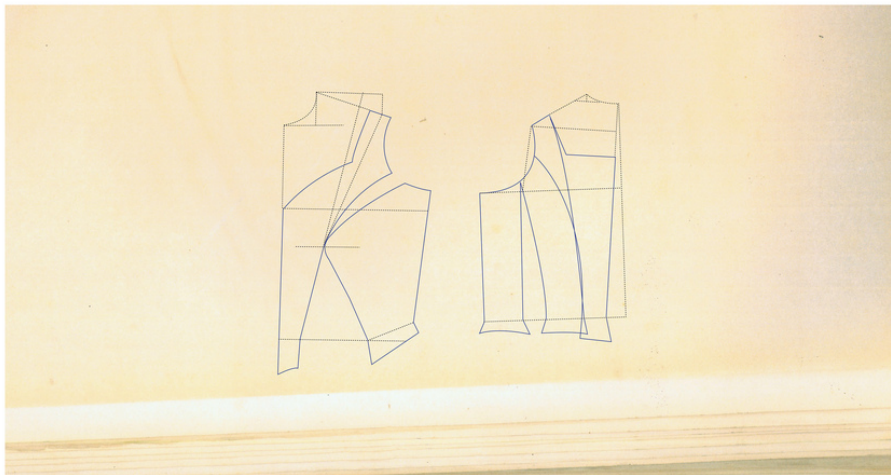
A Little Bit of Klaus, A Little Bit of Homi, 2010, 80 x 60 cm
(digital illustration using Savile Row bespoke tailoring pattern)



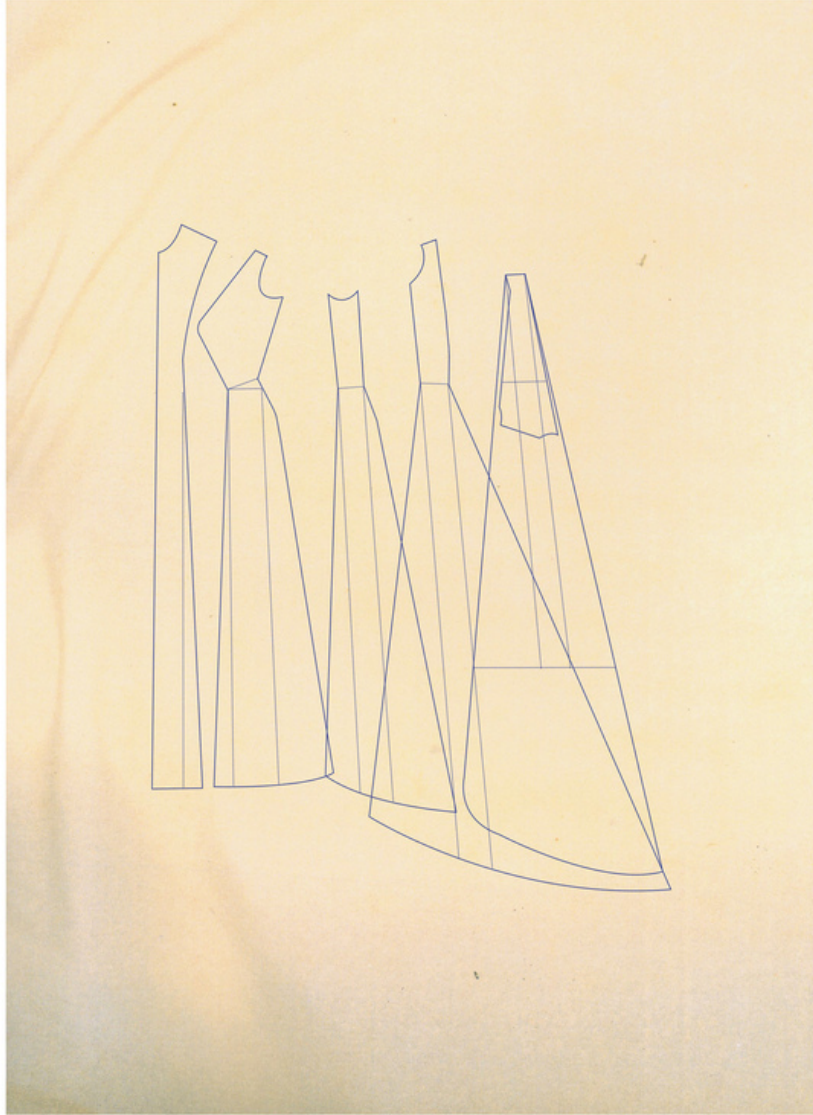
A Little Bit of Klaus, A Little Bit of Homi, 2010, 80 x 60 cm
(digital illustration using Savile Row bespoke tailoring pattern)



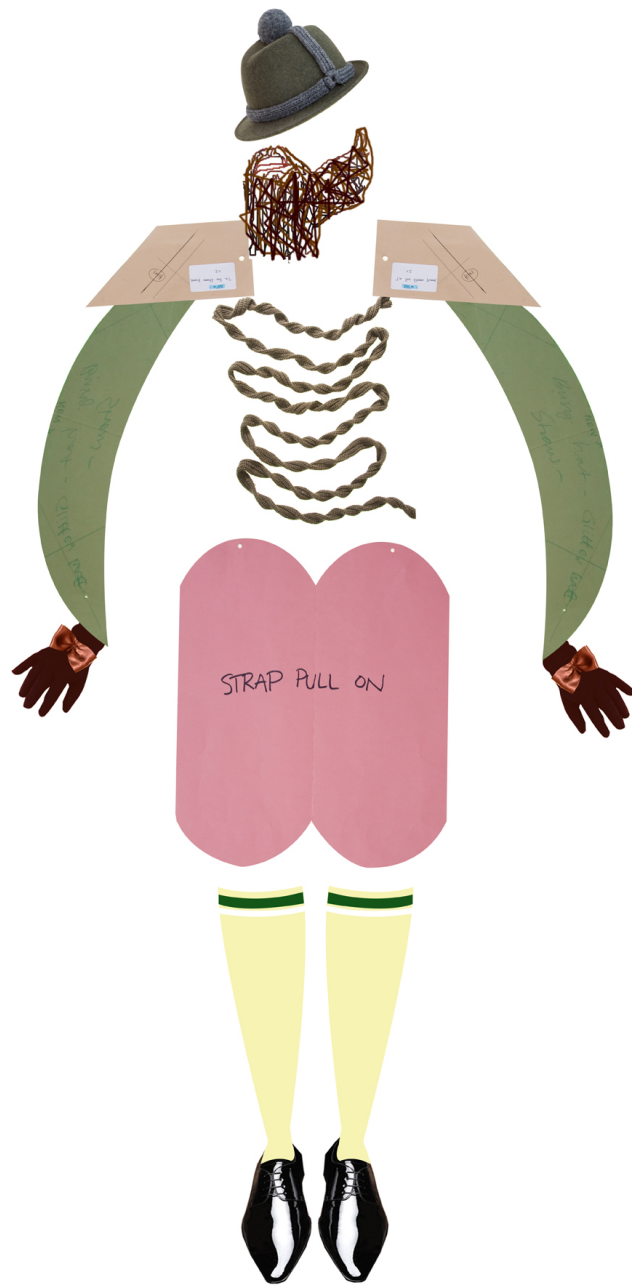
Couture Lines, 2010, 50 x 70 cm
(digital vector illustration using couture tailoring pattern)



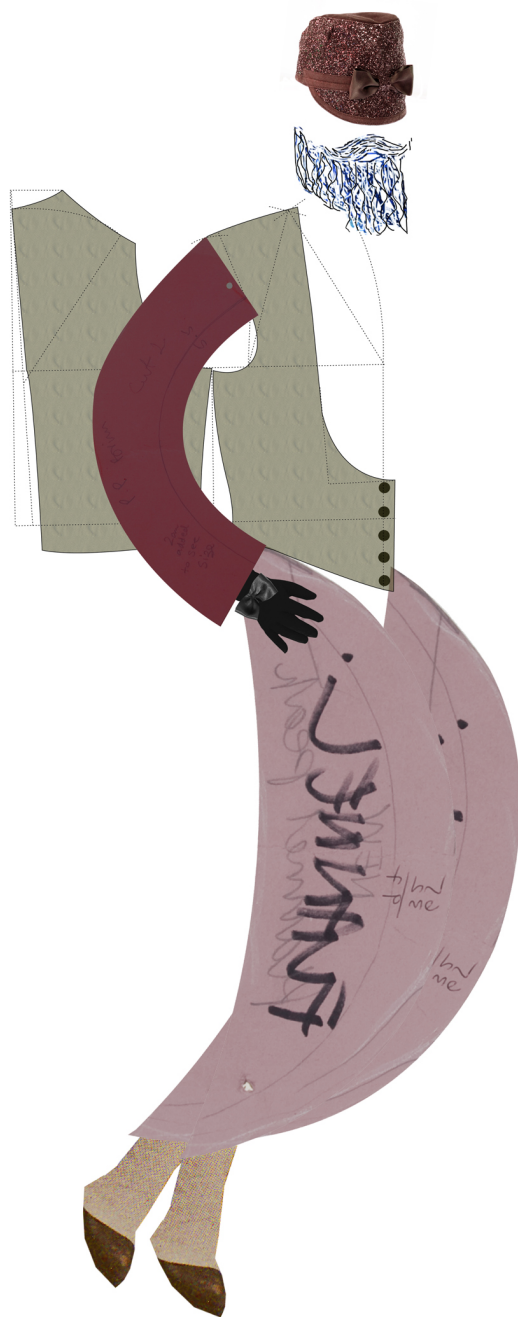
Couture Lines, 2010, 50 x 70 cm
(digital vector illustration using couture tailoring pattern)



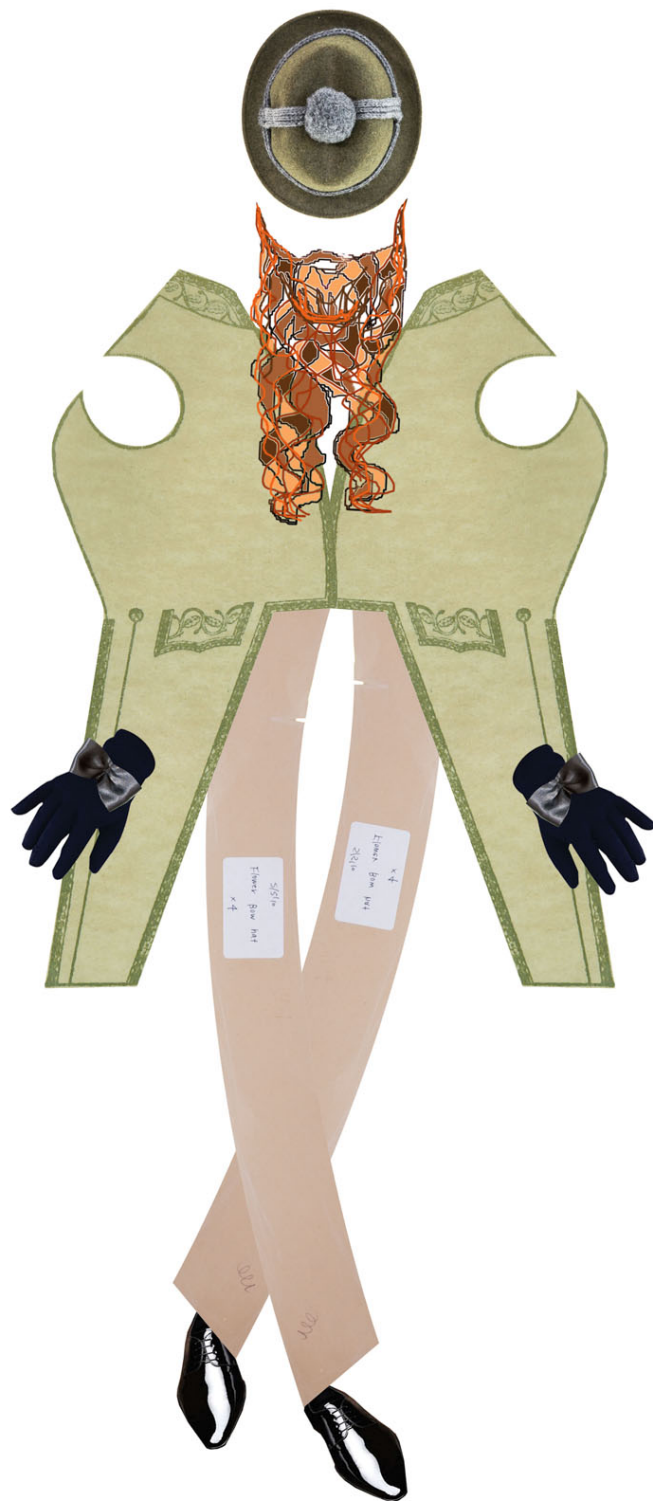
Couture Lines, 2010, 50 x 70 cm
(digital vector illustration using couture tailoring pattern)



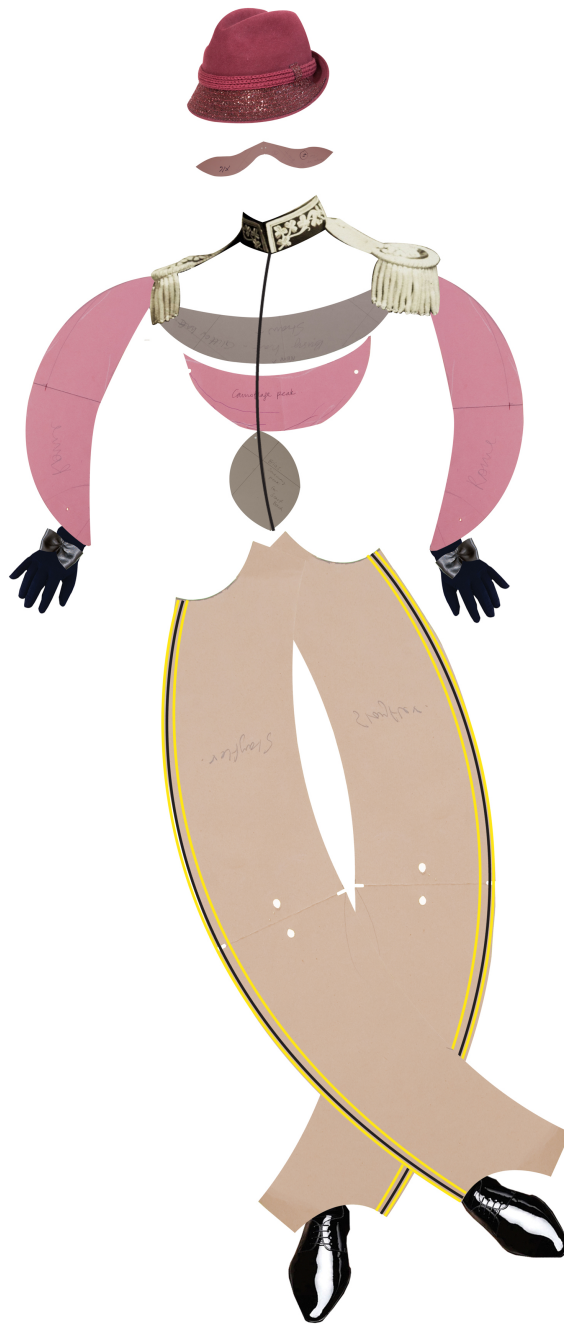
Hat Parade, 2010, 42 x 29.5 cm
(digital illustration using hat tailoring pattern, collaboration with milliners Bernstock Speirs)



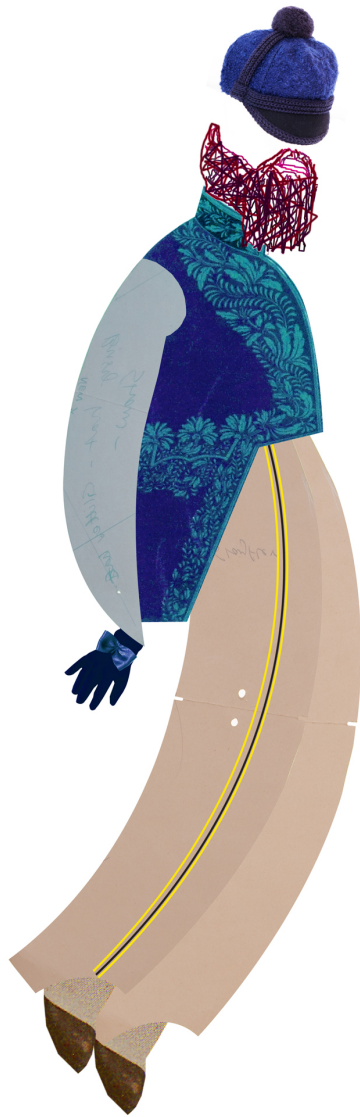
Hat Parade, 2010, 42 x 29.5 cm
(digital illustration using hat tailoring pattern, collaboration with milliners Bernstock Speirs)



Hat Parade, 2010, 42 x 29.5 cm
 (digital illustration using hat tailoring pattern, collaboration with milliners Bernstock Speirs)



Hat Parade, 2010, 42 x 29.5 cm
(digital illustration using hat tailoring pattern, collaboration with milliners Bernstock Speirs)



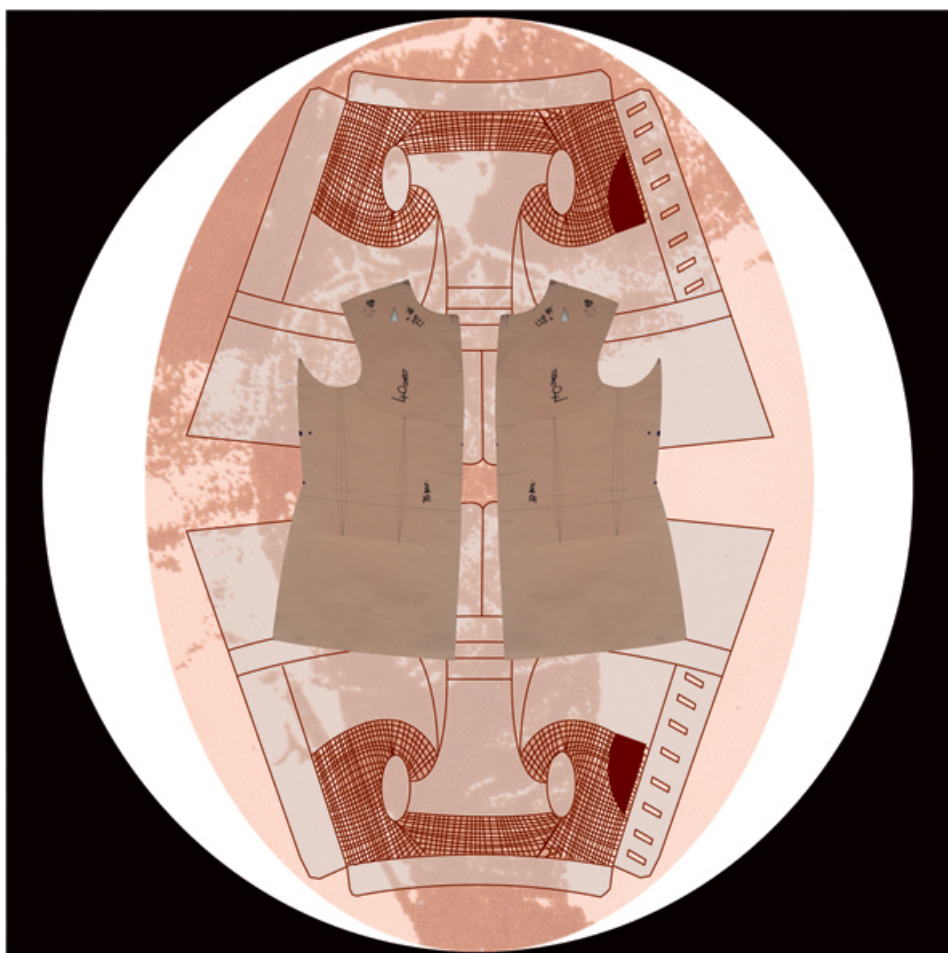
Hat Parade, 2010, 42 x 29.5 cm
(digital illustration using hat tailoring pattern, collaboration with milliners Bernstock Speirs)



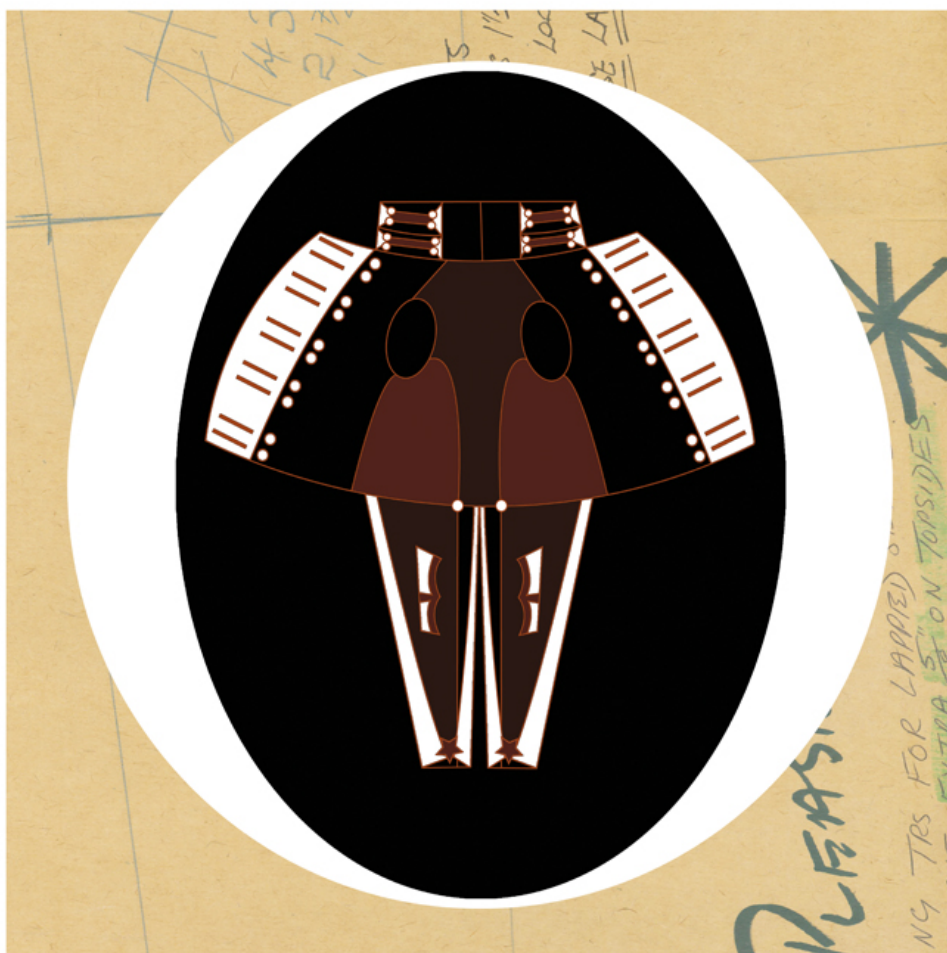
Hat Parade, 2010, 42 x 29.5 cm
(digital illustration using hat tailoring pattern, collaboration with milliners Bernstock Speirs)



Hat Parade Poster, 2010, 100 x 200 cm poster, Old Street Tube, London
(digital illustration using hat tailoring pattern, collaboration with milliners Bernstock Speirs)



Drawing and the Body, 2011, 70 x 70 cm
(digital collage illustration using bespoke Savile Row tailoring patterns)



Drawing and the Body, 2011, 70 x 70 cm
(digital collage illustration using vector drawing of uniform)



Drawing and the Body, 2011, 70 x 70 cm
(digital collage illustration using vector drawing of uniform)



Drawing and the Body, 2011, 70 x 70 cm
(digital collage illustration using uniform photograph)

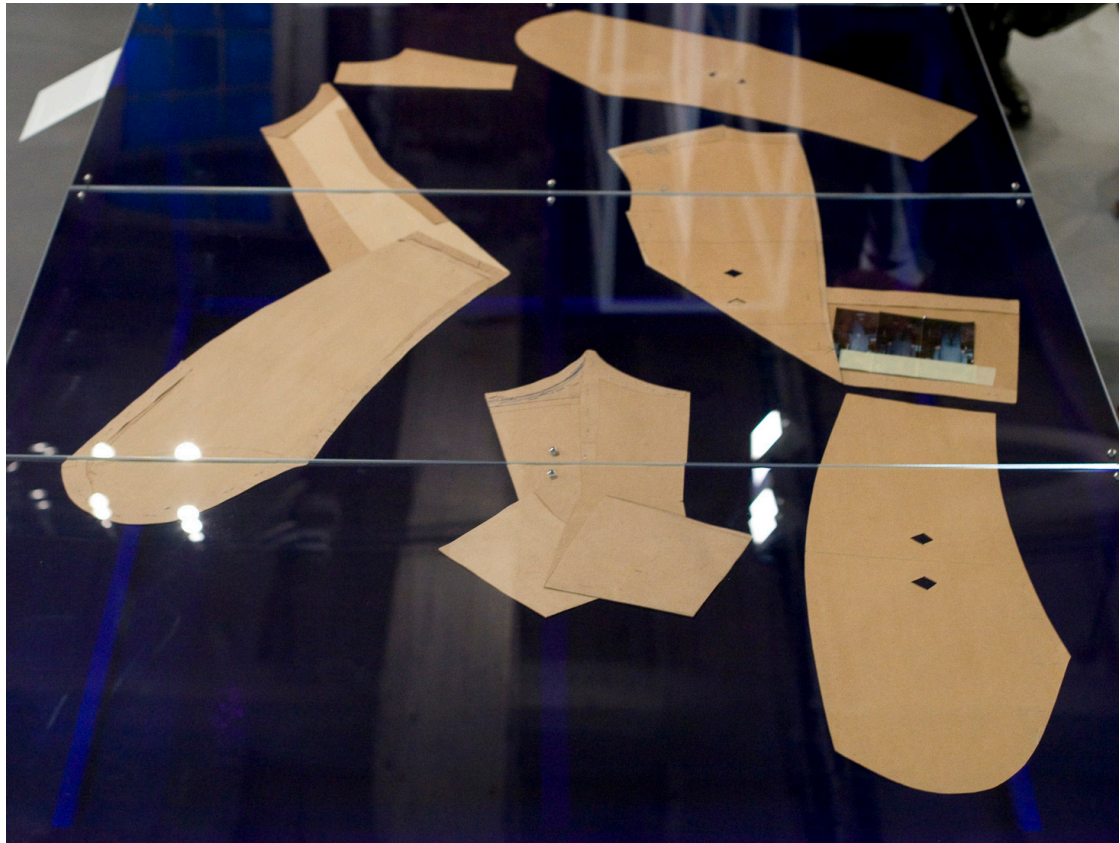
The Savile Row Cutter

№1 JACKET
Wt. 16 1/2, Lt. 24 1/2, Bust 36, W 32, Seat 38, Neck 15



Michael Skinner – Master Tailor
in conversation with Hormazd Narielwalla

The Savile Row Cutter, 2011, Bene-Factum publishers, London



Floating in the Lay, 177.8 x 127 cm, 2011
(physical collage installation using bespoke Savile Row tailoring patterns)



Fairy-God, Fashion-Mother, 2011, 84 x 59.4 cm
(collage illustration using bespoke Savile Row tailoring patterns)



Fairy-God, Fashion-Mother, 2011, 84 x 59.4 cm
(collage illustration using bespoke Savile Row tailoring patterns)



Fairy-God, Fashion-Mother, 2011, 84 x 59.4 cm
(collage illustration using domestic tissue patterns)



Fairy-God, Fashion-Mother, 2011, 84 x 59.4 cm
(collage illustration using bespoke Savile Row tailoring patterns)



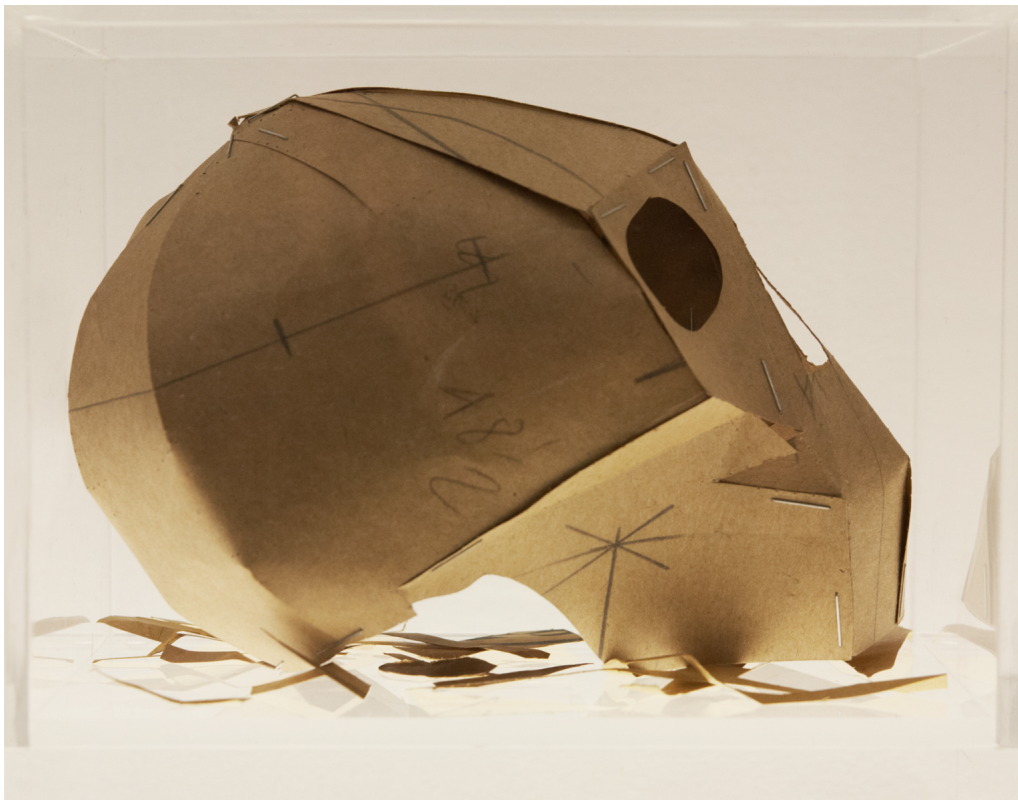
Fairy-God, Fashion-Mother, 2011, 84 x 59.4 cm
(collage illustration using bespoke Savile Row tailoring patterns)



Fairy-God, Fashion-Mother, 2011, 84 x 59.4 cm
(collage illustration using bespoke Savile Row tailoring patterns)



Dead Man's Patterns – Memento Mori Skull, 2012, 16 x 19 x 20 cm, edition of 50
(3D sculpture using bespoke Savile Row tailoring patterns)



Dead Man's Patterns – Memento Mori Skull, 2012, 16 x 19 x 20 cm, edition of 50
(3D sculpture using bespoke Savile Row tailoring patterns)



Dead Man's Patterns – Memento Mori Skull - negative, 2012, 84 x 59.4 cm
(2D original collage using negative cut-outs left over from making the skulls)



Dead Man's Patterns – Memento Mori Skull - negative, 2012, 84 x 59.4 cm
(2D original collage using negative cut-outs left over from making the skulls)



Dead Man's Patterns – Memento Mori Skull - negative, 2012, 84 x 59.4 cm
(2D original collage using negative cut-outs left over from making the skulls)



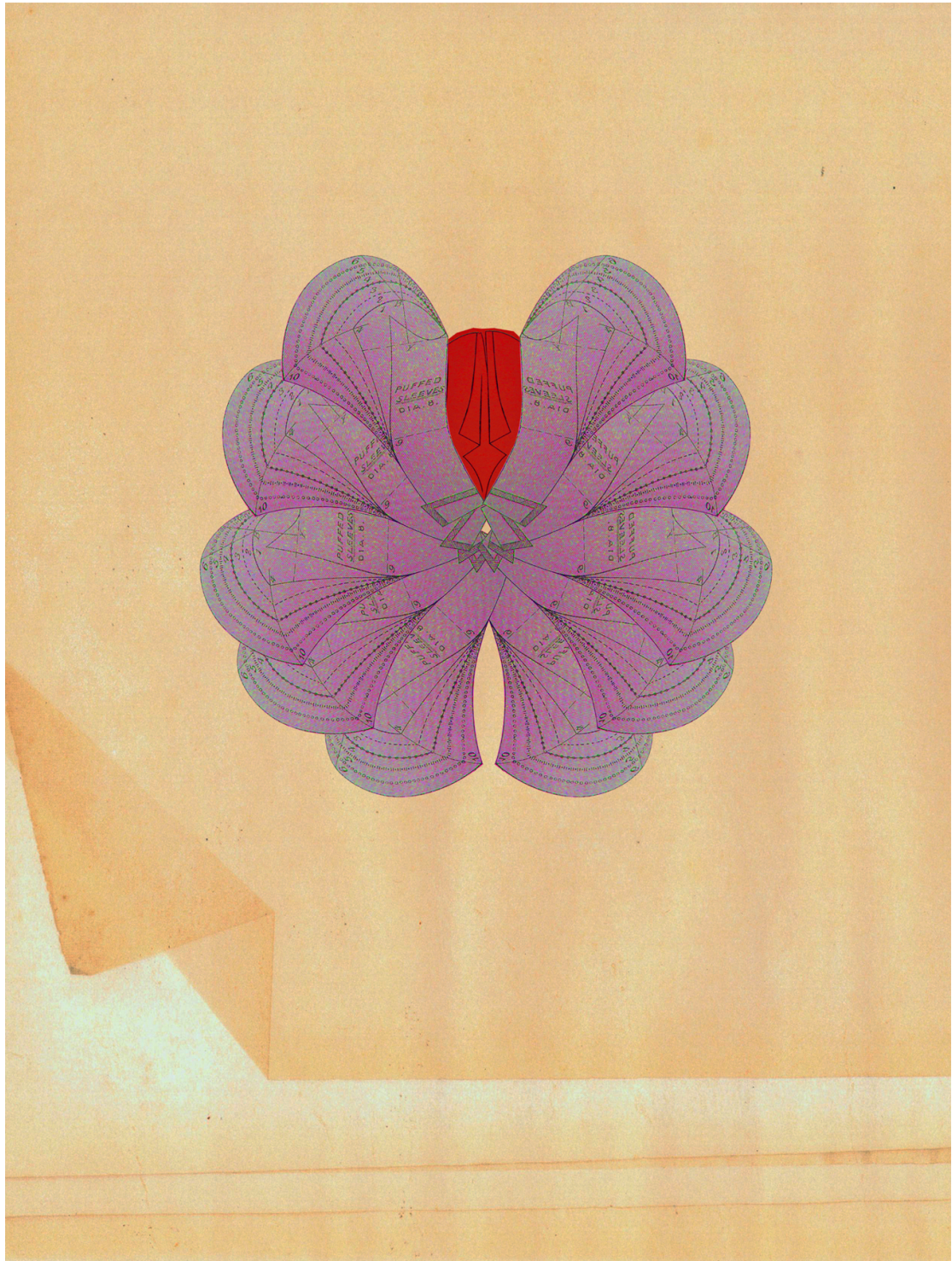
Dead Man's Patterns – Memento Mori Skull - negative, 2012, 84 x 59.4 cm
(2D original collage using negative cut-outs left over from making the skulls)



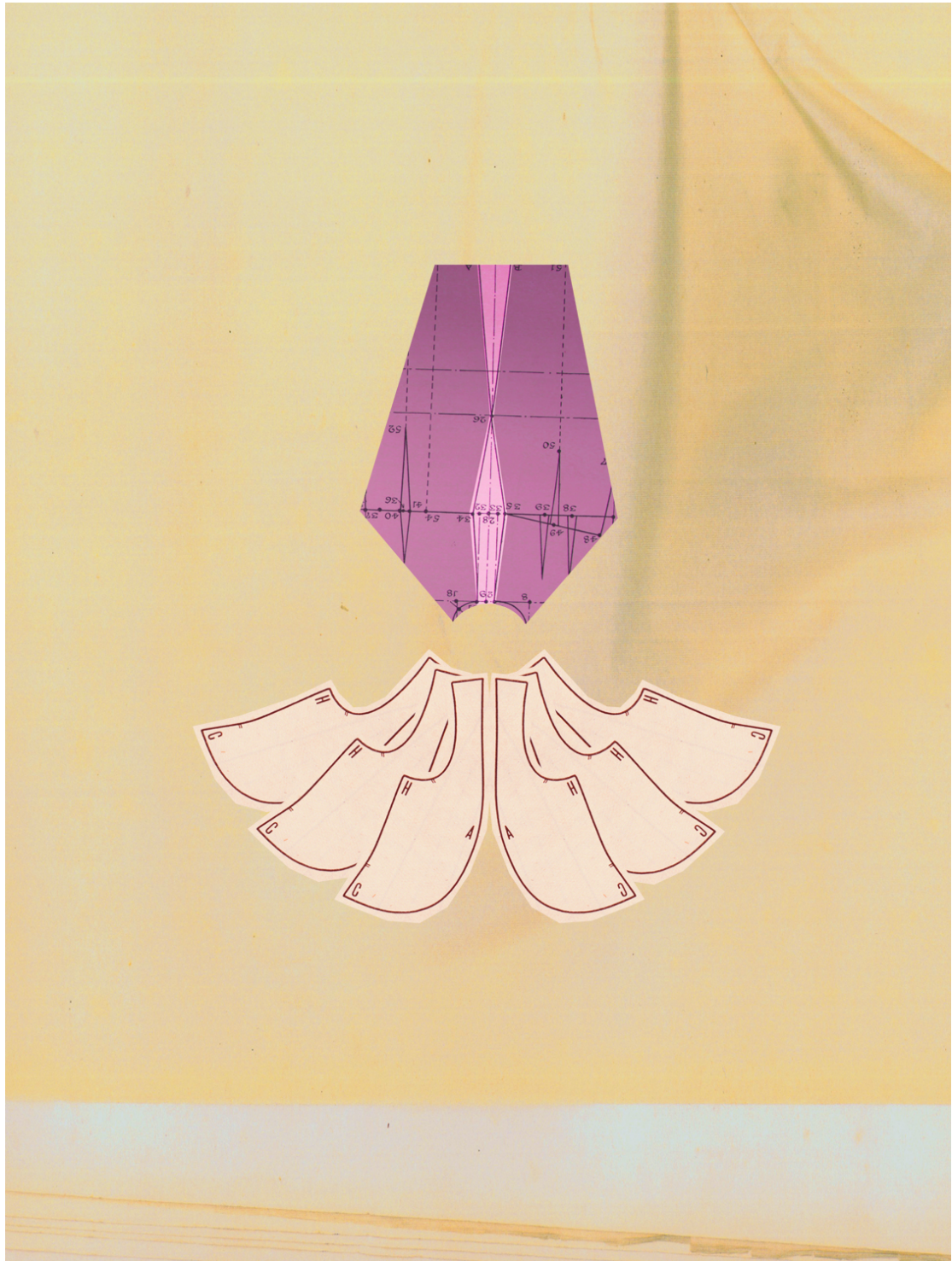
Dead Man's Patterns – Memento Mori Skull - negative, 2012, 84 x 59.4 cm
(2D original collage using negative cut-outs left over from making the skulls)



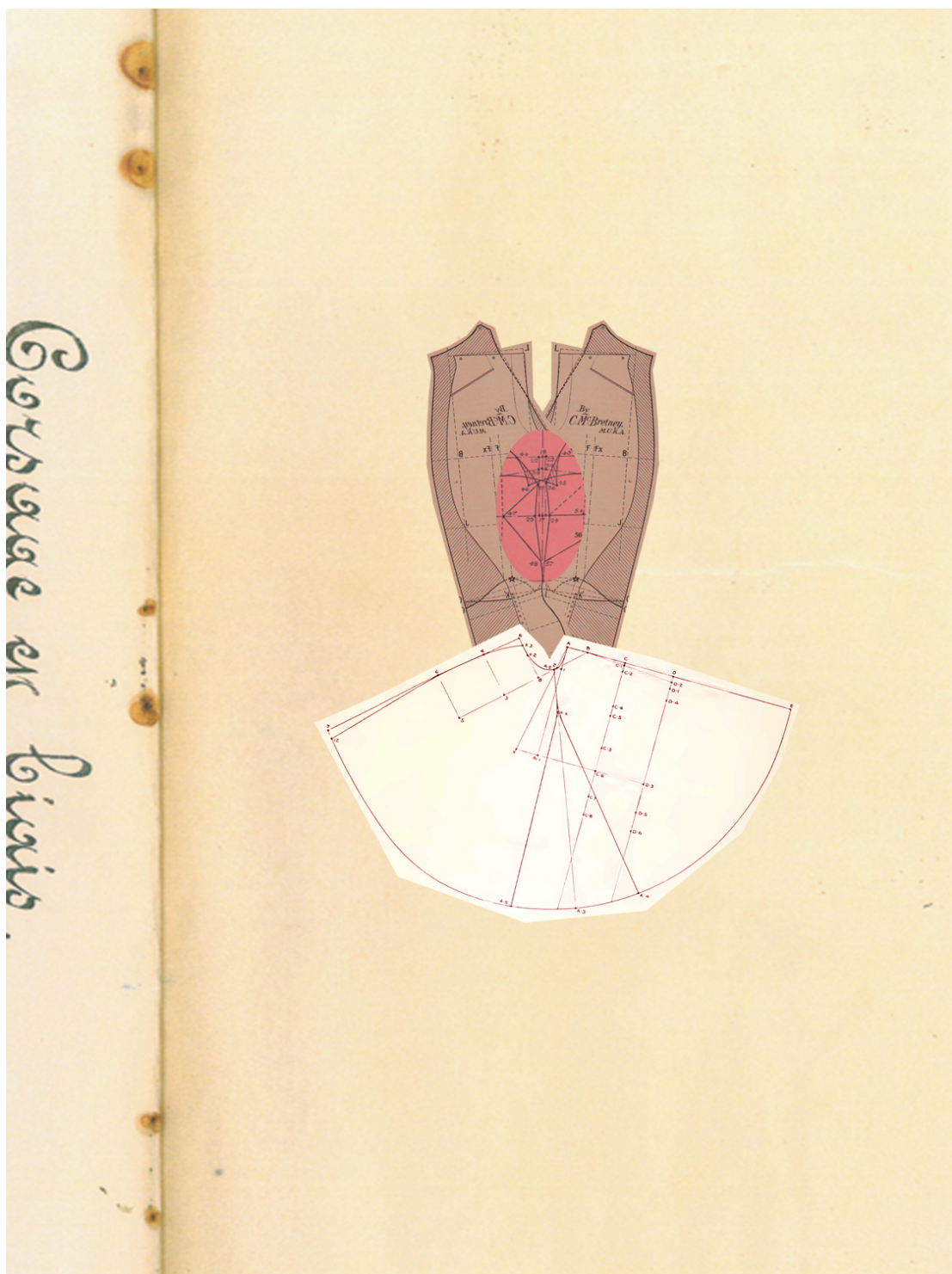
Dead Man's Patterns – Memento Mori Skull - negative, 2012, 84 x 59.4 cm
(2D original collage using negative cut-outs left over from making the skulls)



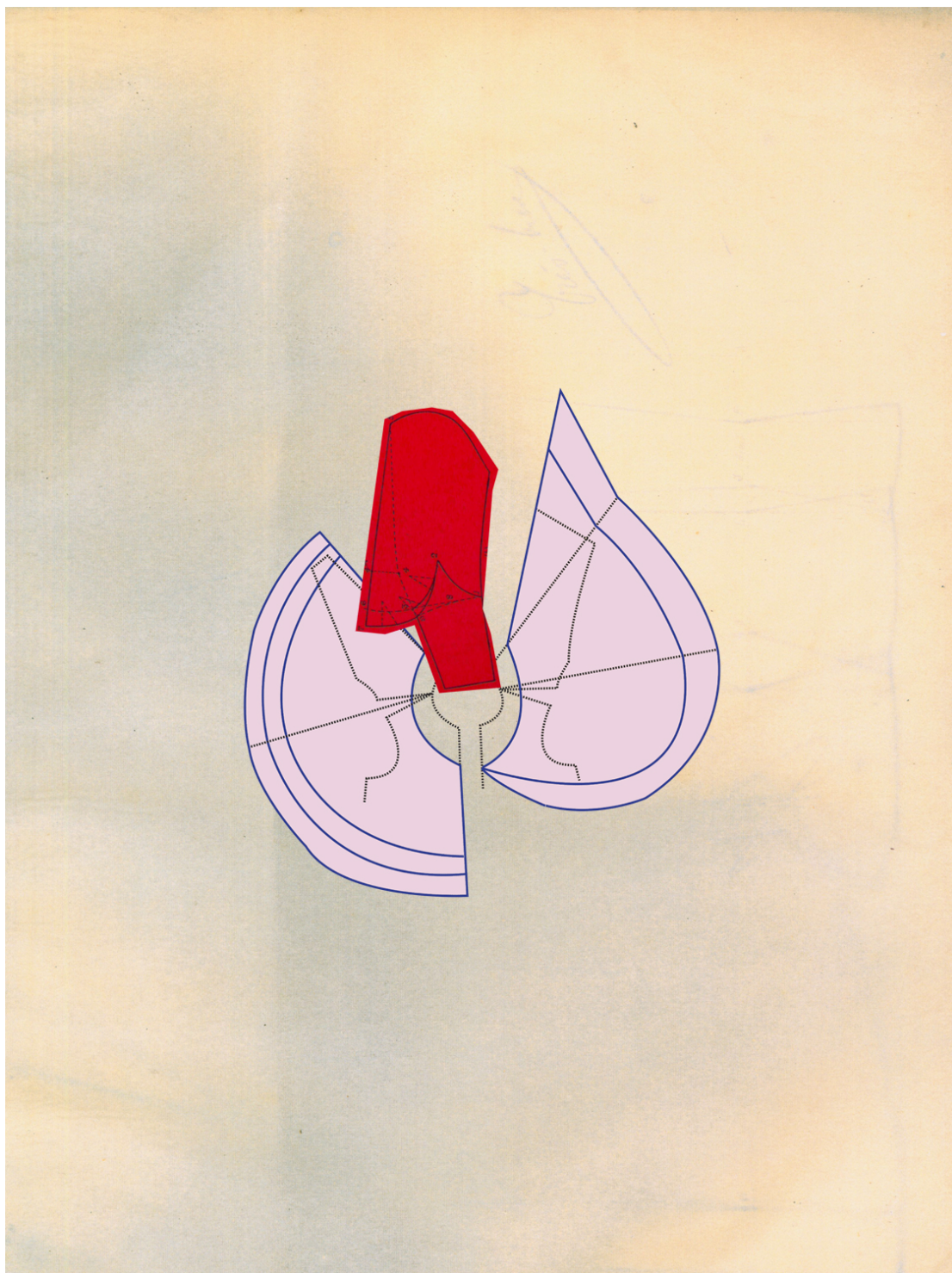
Imprint, 2012, 80 x 60 cm
(2D original collage using digital Victorian tailoring patterns)



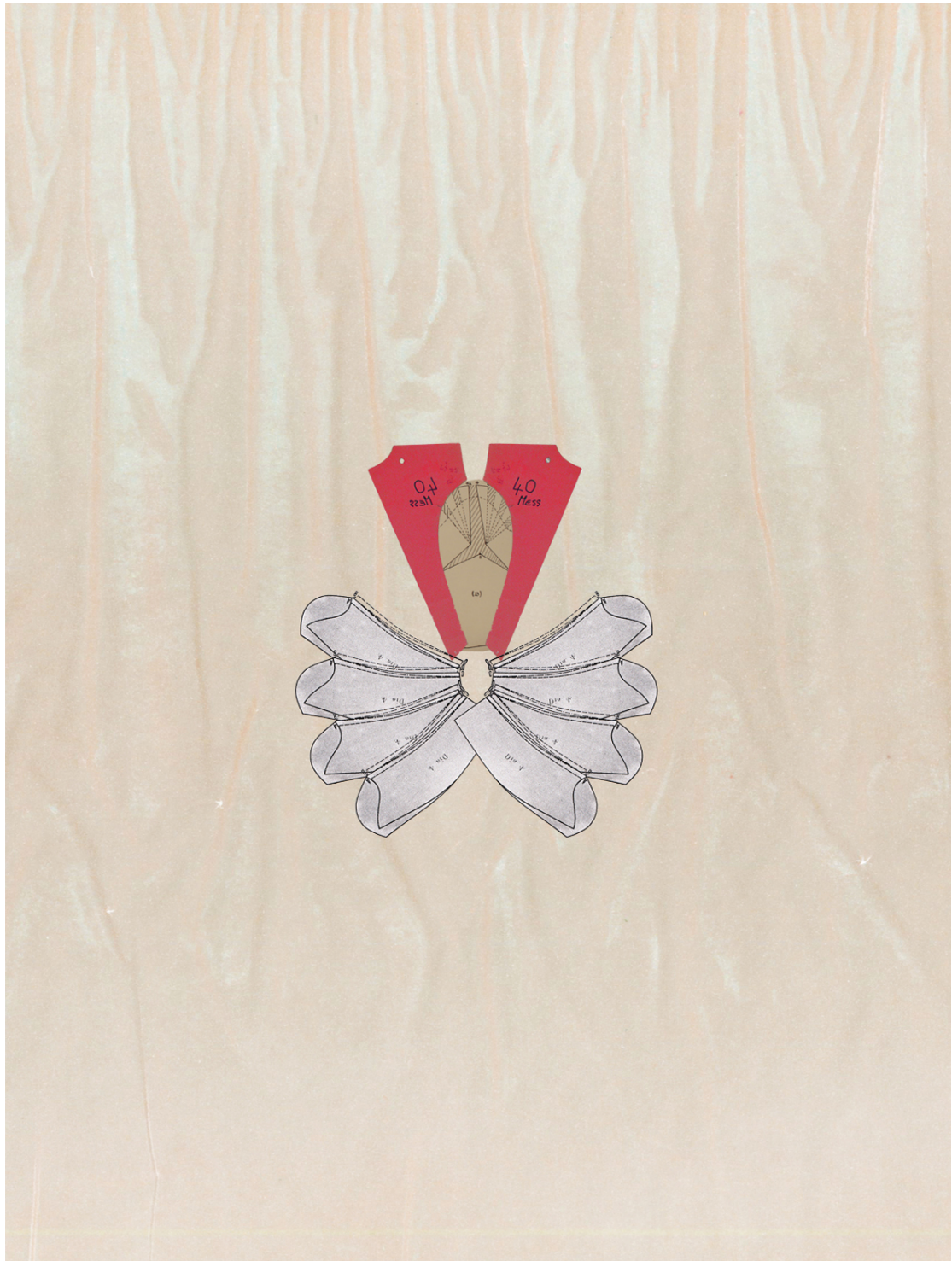
Imprint, 2012, 80 x 60 cm
(2D original collage using digital Victorian tailoring patterns)



Imprint, 2012, 80 x 60 cm
(2D original collage using digital Victorian tailoring patterns)



Imprint, 2012, 80 x 60 cm
(2D original collage using digital Victorian tailoring patterns)



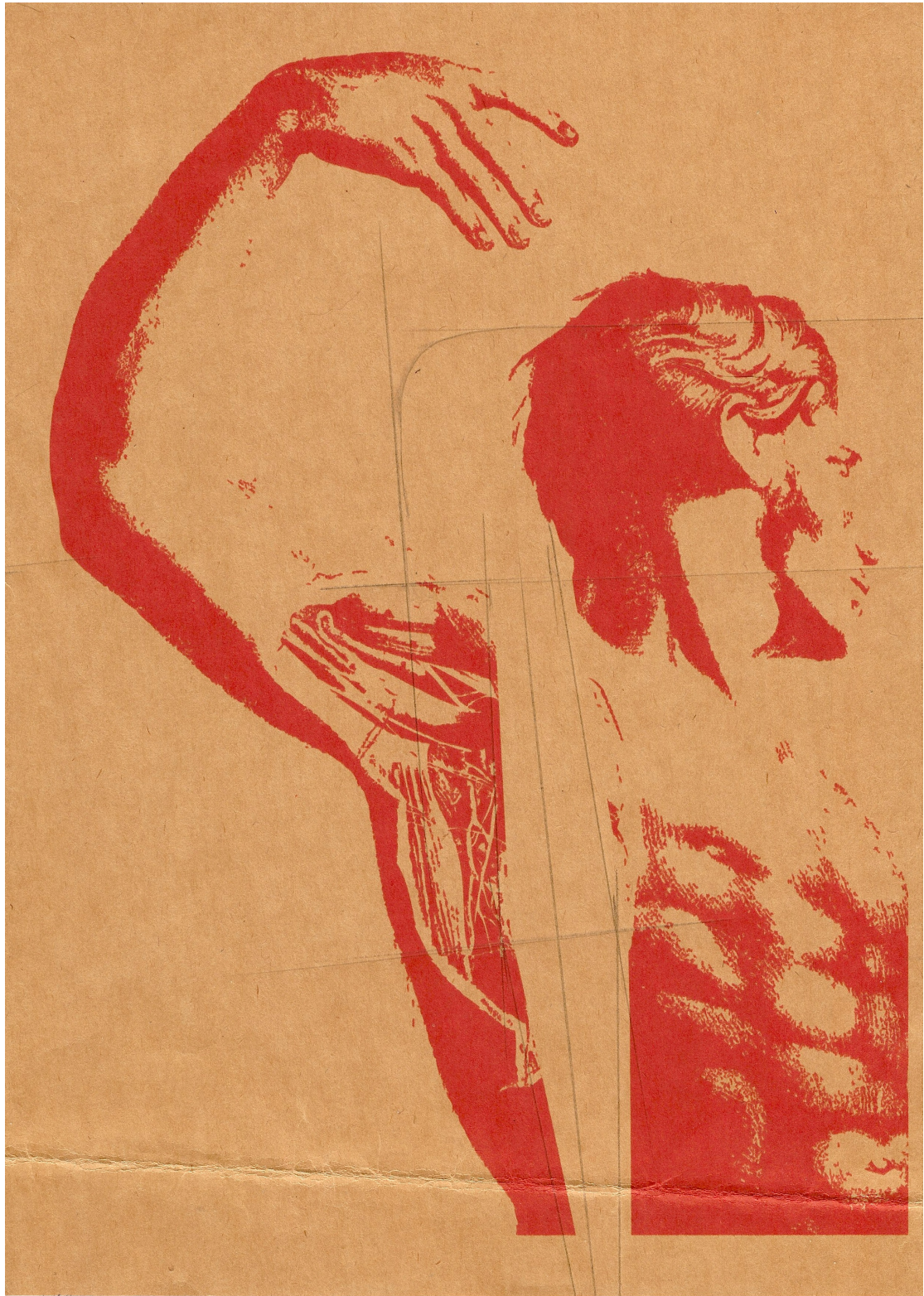
Imprint, 2012, 80 x 60 cm
(2D original collage using digital Victorian tailoring patterns)



Slashed, 2012, 42 x 29.7 cm
(2D inkjet print on original tailoring pattern cut in dimension)



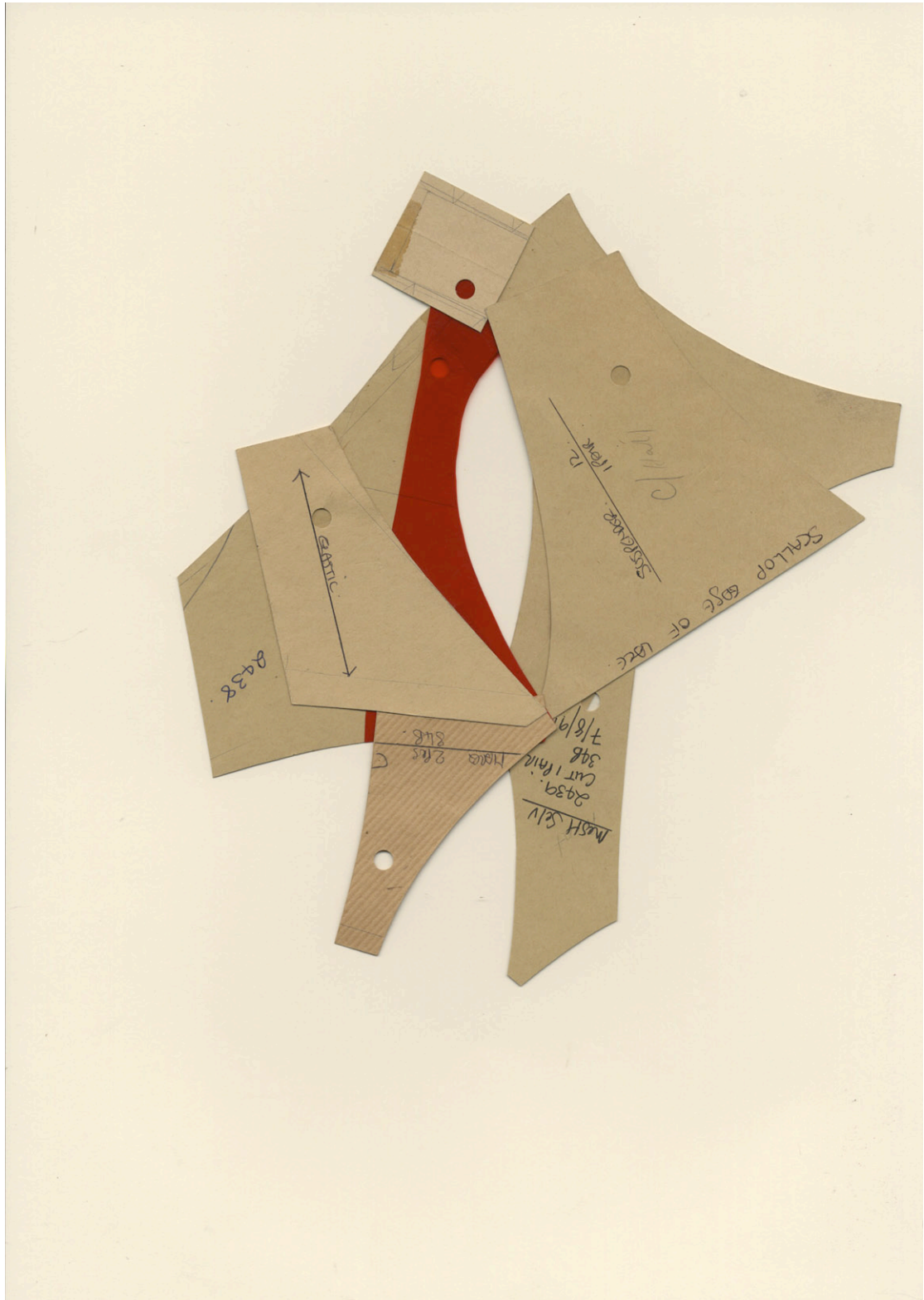
Slashed, 2012, 42 x 29.7 cm
(2D inkjet print on original tailoring pattern cut in dimension)



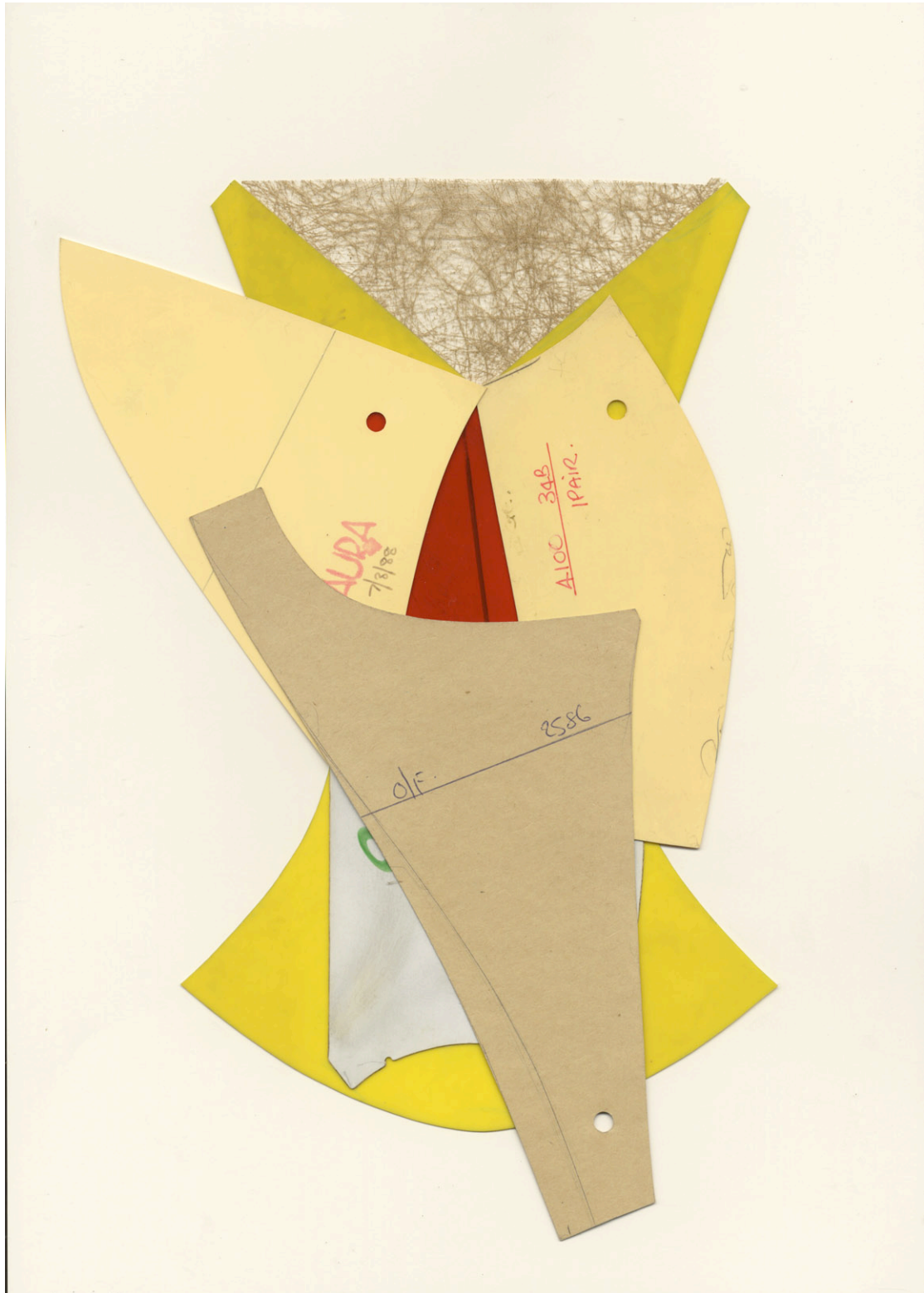
Slashed, 2012, 42 x 29.7 cm
(2D inkjet print on original tailoring pattern cut in dimension)



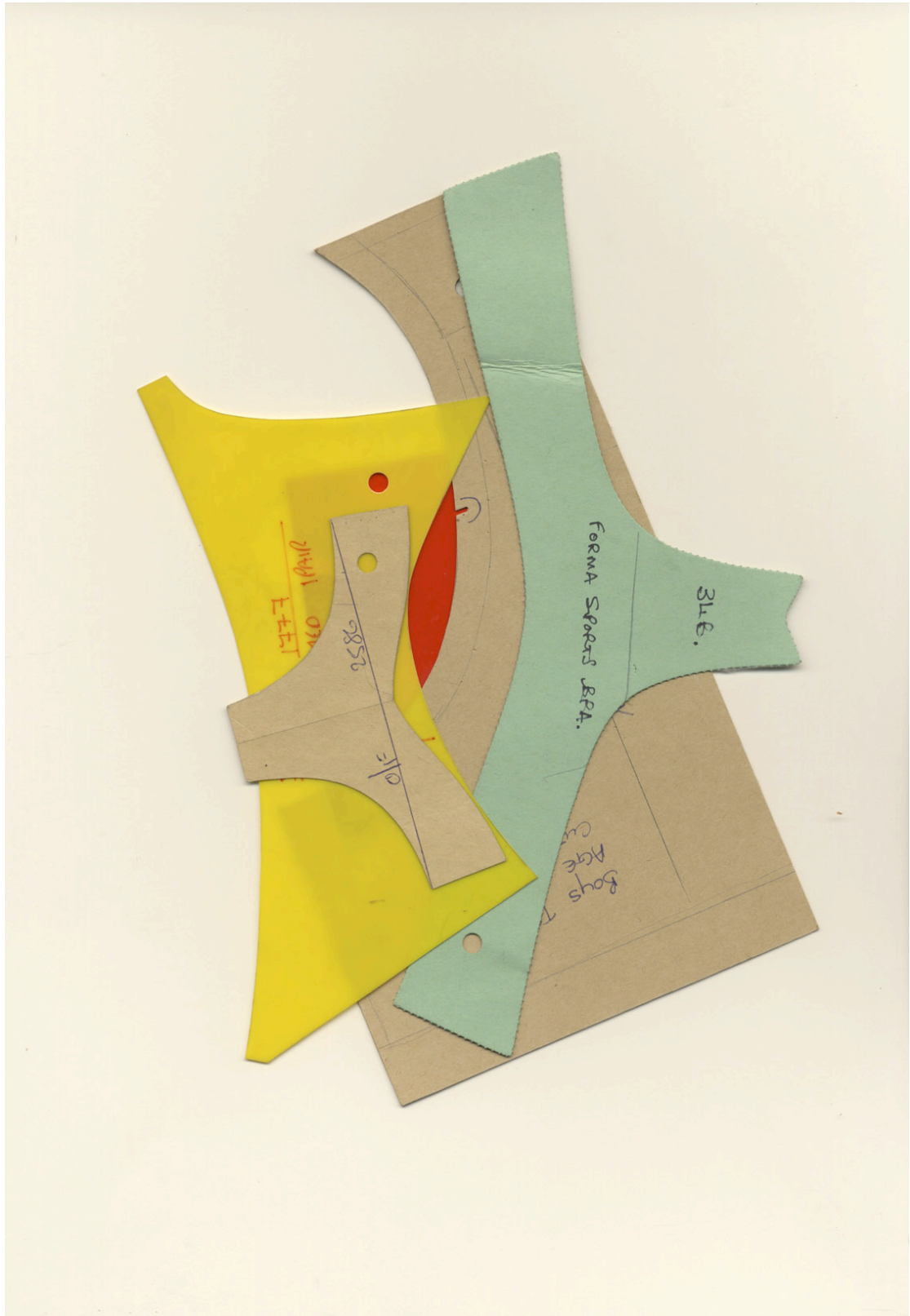
Slashed, 2012, 42 x 29.7 cm
(2D inkjet print on original tailoring pattern cut in dimension)



Angelica from *Lady Gardens* series, 2012, 42 x 29.5 cm
(2D original collage using industrial women's lingerie pattern)



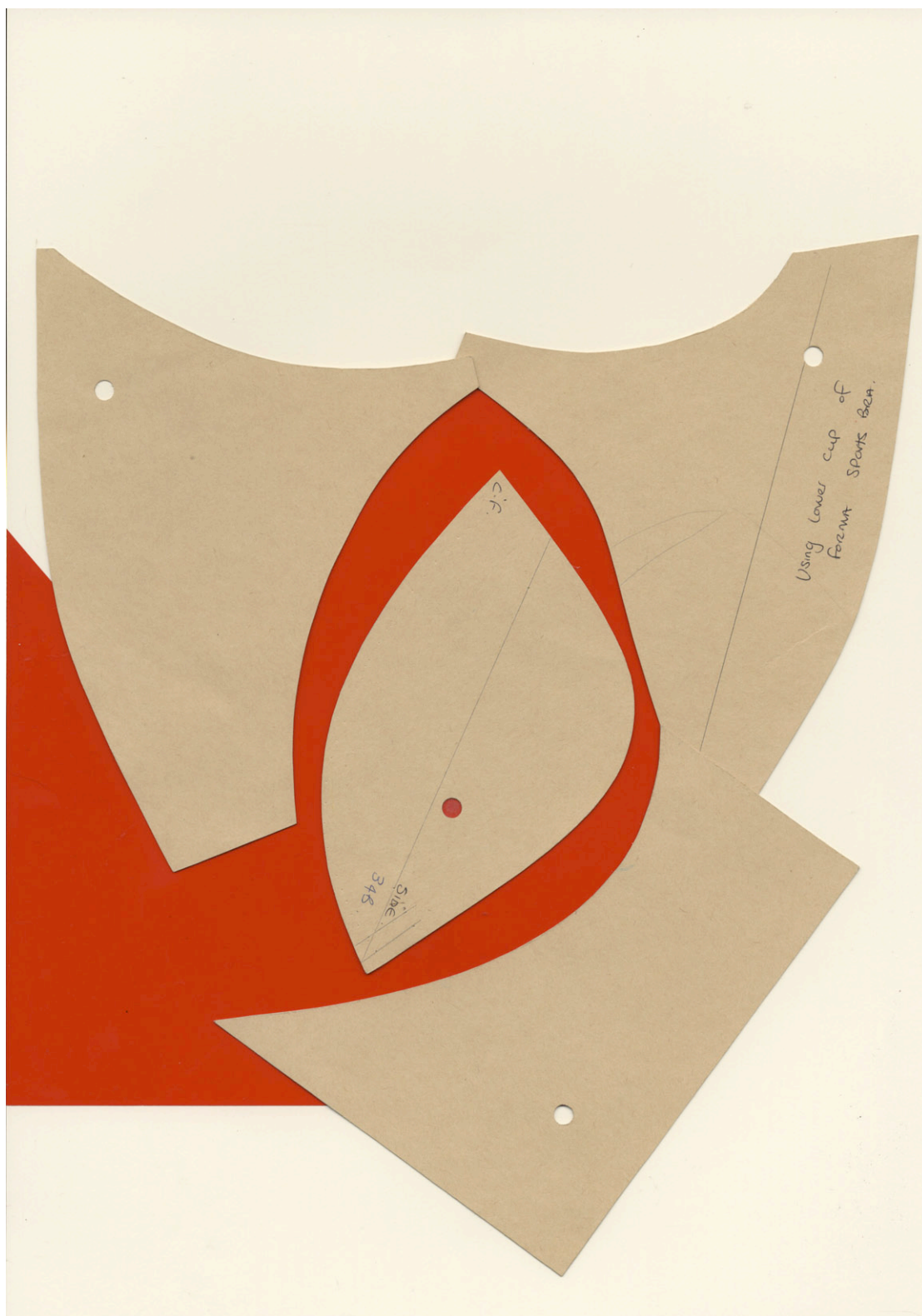
Filix from *Lady Gardens* series, 2012, 42 x 29.5 cm
(2D original collage using industrial women lingerie pattern)



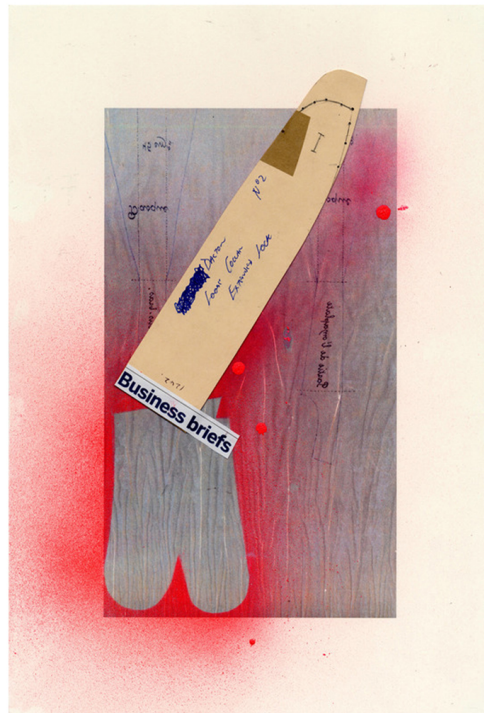
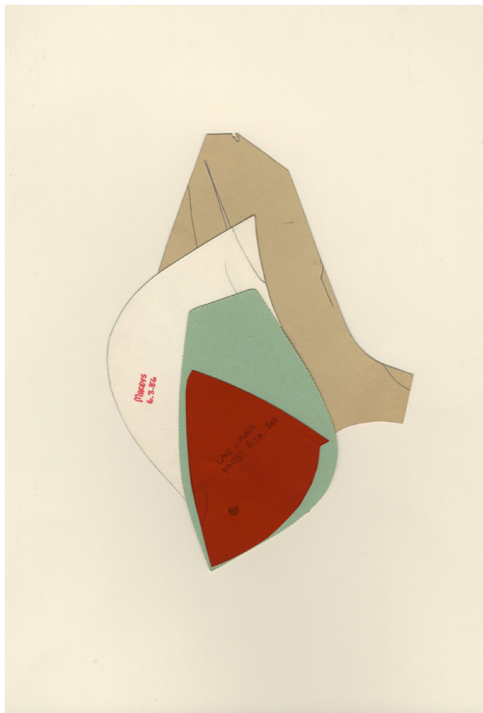
Diospyros from *Lady Gardens* series, 2012, 42 x 29.5 cm
(2D original collage using industrial women lingerie pattern)



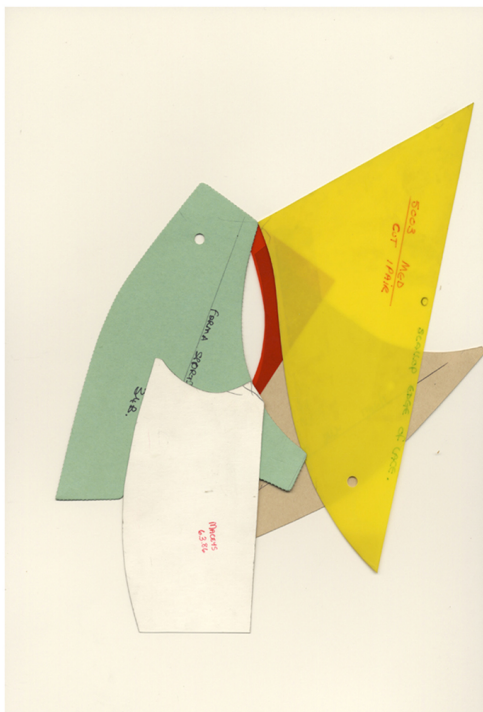
Phalangium from *Lady Gardens* series, 2012, 42 x 29.5 cm
(2D original collage using industrial women lingerie pattern)



Amygdalus from *Lady Gardens* series, 2012, 42 x 29.5 cm
(2D original collage using industrial women lingerie pattern)



Love Nest series, 2013, diptych, 42 x 29.5 cm
(2D original collage using industrial women lingerie and bespoke Savile Row shirt pattern)



Love Nest series, 2013, diptych, 42 x 29.5 cm
(2D original collage using industrial women lingerie and bespoke Savile Row shirt pattern)



Skull Tower, 2013, diptych, 140 x 46 x 46 cm
(3D original collage sculpture using bespoke Savile Row tailoring pattern)



Love Gardens, 2013, 58.5 x 40.5 x 30 cm
(3D paper relief original collage sculpture using quarter scale military tailoring pattern)



Love Gardens, 2013, 58.5 x 40.5 x 30 cm
(3D paper relief original collage sculpture using quarter scale military tailoring pattern)



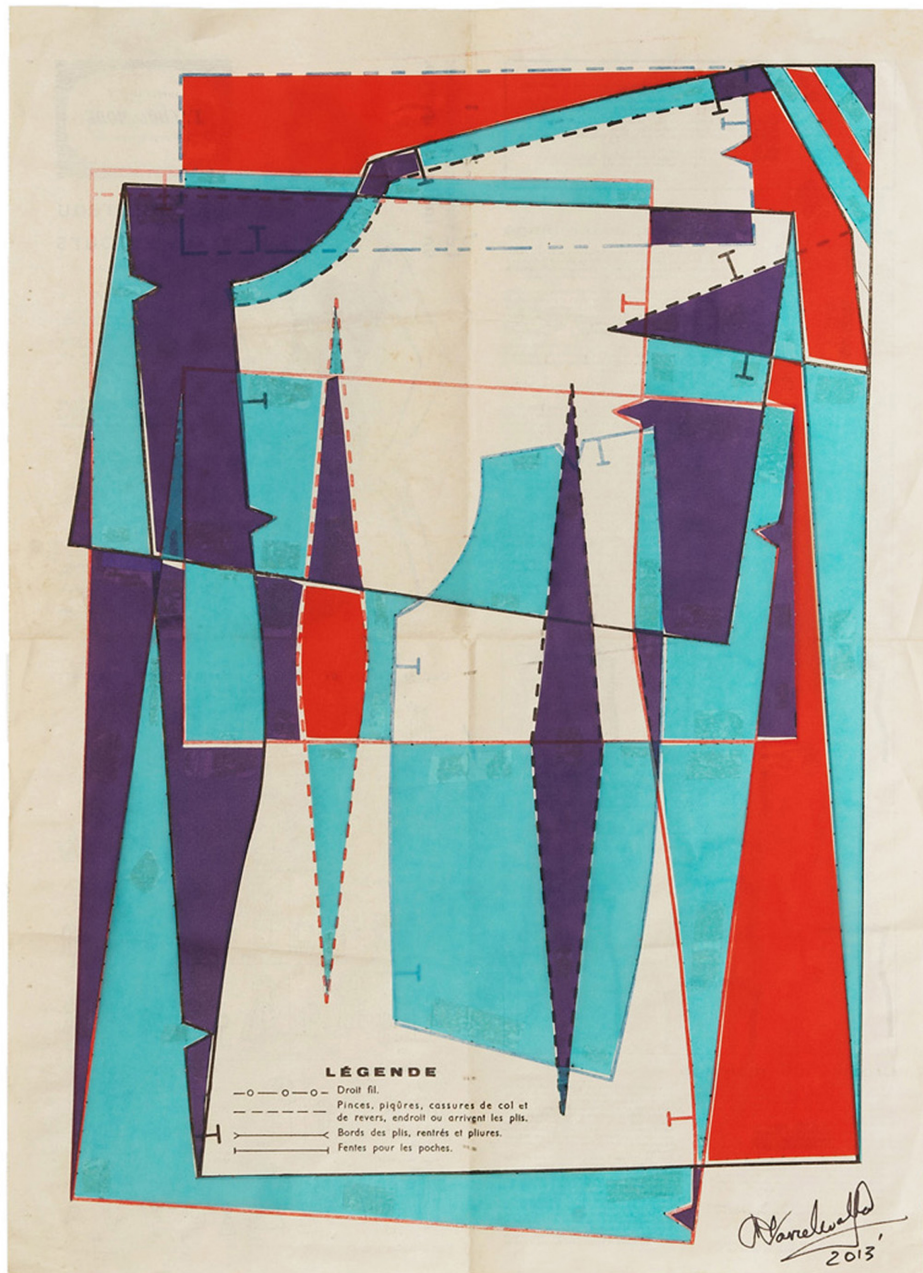
Love Gardens, 2013, 58.5 x 40.5 x 30 cm
(3D paper relief original collage sculpture using quarter scale military tailoring pattern)



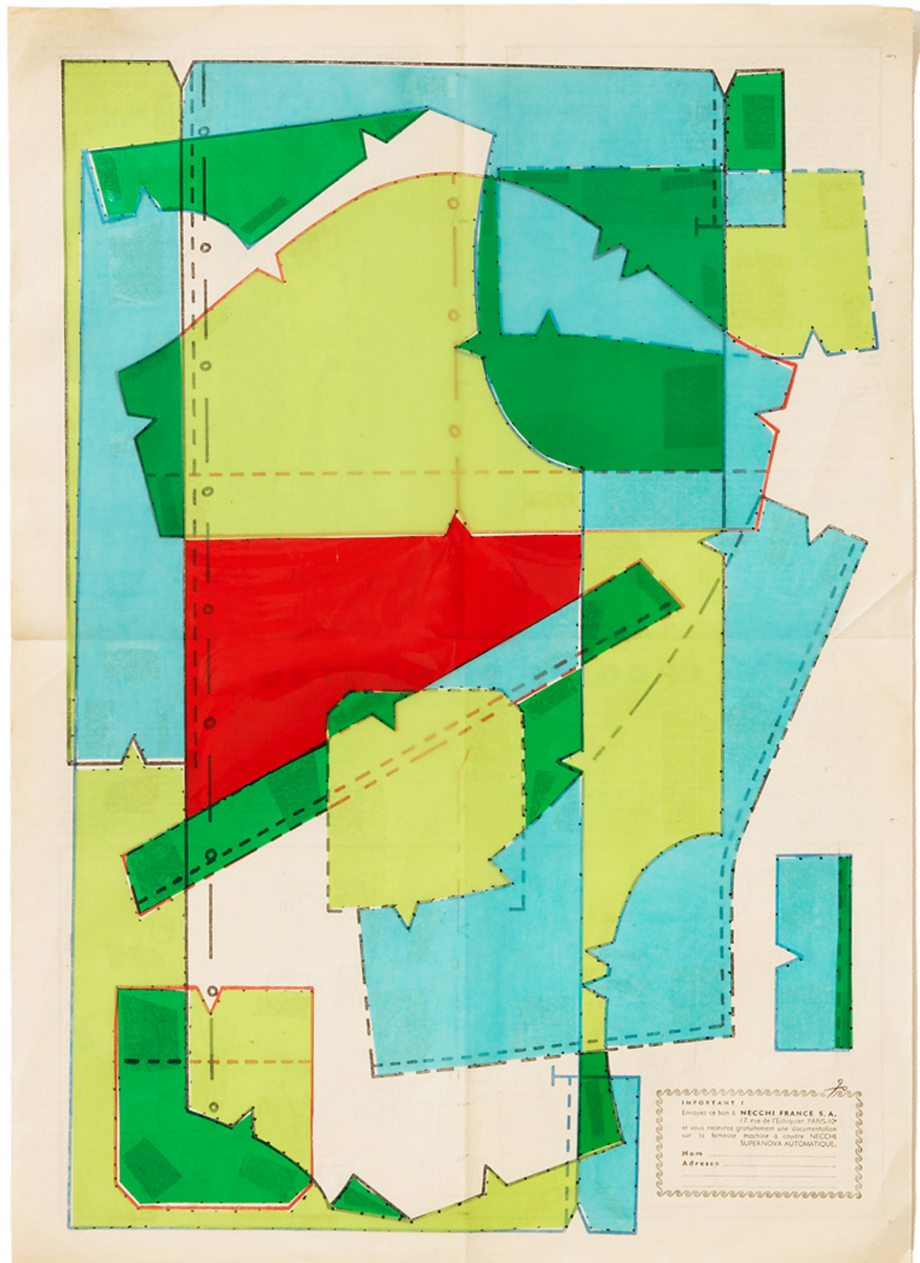
Love Gardens, 2013, 58.5 x 40.5 x 42 cm
(3D paper relief original collage sculpture using quarter scale military tailoring pattern)



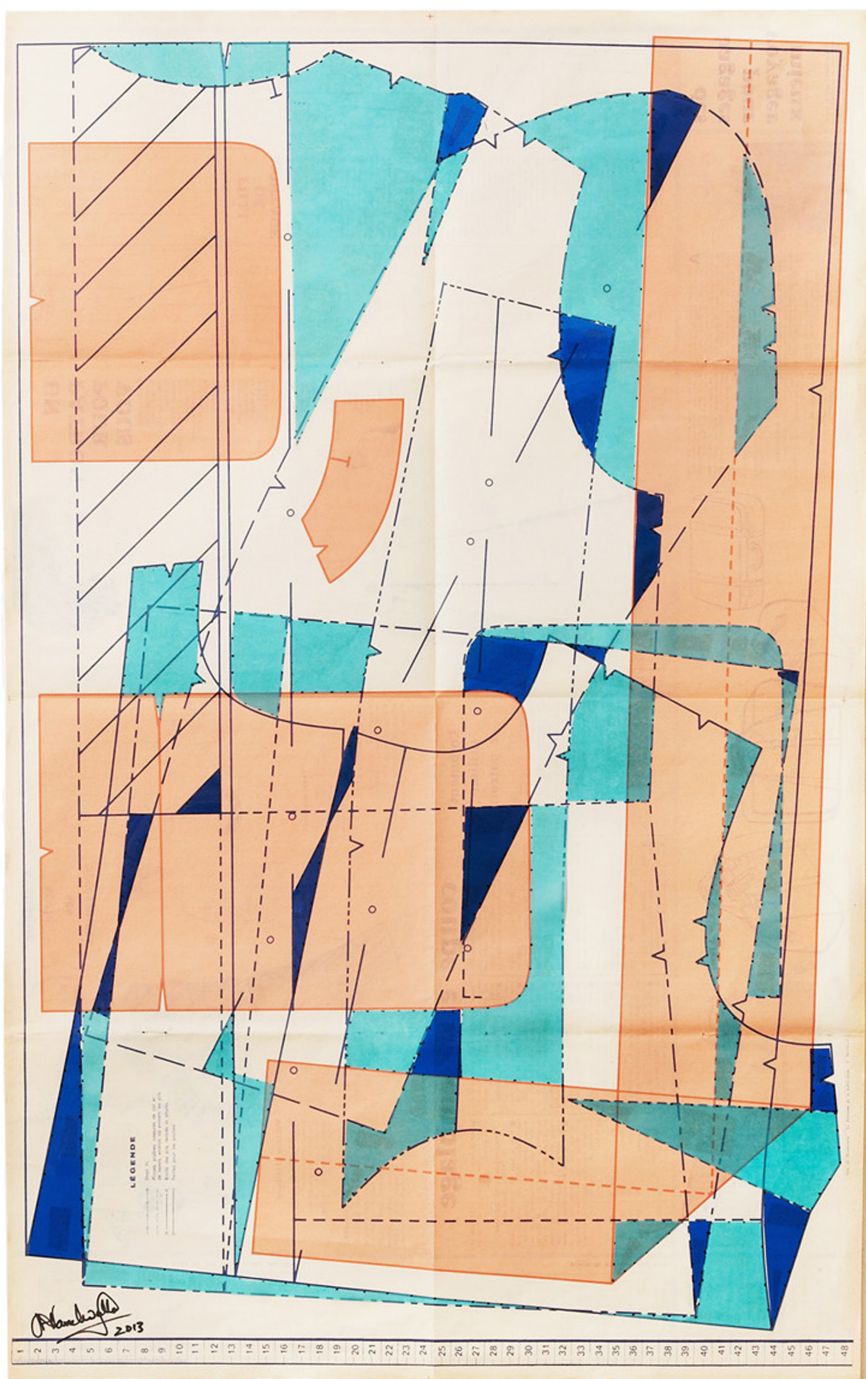
Love Gardens, 2013, 58.5 x 40.5 x 30 cm
(3D paper relief original collage sculpture using negative space of quarter scale military tailoring pattern)



Le Petit Echo de la Mode No.1, 2013, 54 x 39 cm
(2D original collage using original French domestic patterns)



Le Petit Echo de la Mode No.2, 2013, 54 x 38.4 cm
 (2D original collage using original French domestic patterns)



Le Petit Echo de la Mode No. 15, 2013, 78 x 48.5 cm
 (2D original collage using original French domestic patterns)

