

# SOLSTICE & CLT Conference 2016

Exploring Online Teaching and Learning Spaces in  
an Art and Design Environment (an Audio Enquiry)  
John Jackson, University of the Arts London

Edge Hill  
University



9<sup>th</sup> & 10<sup>th</sup> June 2016

# Exploring online Teaching Spaces in an Art & Design Environment (an audio enquiry)

John Jackson  
Educational Developer  
University of the Arts London



# The next generation of creative talent

The most exciting new work from UAL's freshest graduates at our Summer Shows

[Funding for creative talent](#)

[See our Summer Shows](#)

Study at UAL

All levels

Search

# **Digital Learning Spaces - an audio enquiry with academic practitioners.**

## **Rationale**

Academics respond well to being inspired by examples of 'real' 'Teaching Enhanced Learning' (TeL) practice. Collecting short case studies of use and posting them openly will provide a pool of inspiration which will help to move practice into digital spaces where appropriate.

The case studies are designed to elicit the 'learning design' thinking behind the use of 'Teaching Enhanced Learning' (TeL) and to contextualise the value of the incorporation of digital spaces. In this way they are design-first, tech-second in emphasis. The case studies will be organised to highlight the modes of use or learning-design rather than the discipline to encourage cross-disciplinary inspiration.

# Why an 'audio enquiry'?

Immediacy

Interviewee ease

Straight forward

Flexible

# Technology Enhanced Learning @ UAL

Exploring digital learning spaces

HOME

## Delivering a low residency post graduate course to international students

[Leave a reply](#)



TAGS

[Central Saint Martins](#)

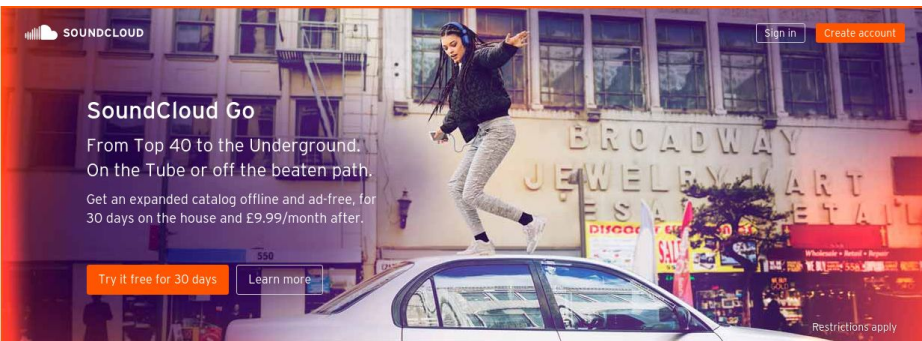
[Cordwainers Plus](#) [CSM Industry LCC LCF](#) [Foundation London College of Fashion](#)

[Moodle](#) [photography](#) [podcasts](#)

[reflective practice](#) [research skills](#)

[technology enhanced learning](#) [TEL](#)

[Workflow](#)



# tunestotube

[upload](#) [faq](#) [contact](#) [login](#)

The quick and easy way to upload your MP3 to YouTube

[f Recommended](#) 7.4K

.mp3 → **YouTube**

Start by clicking the button below - you will be taken to Google Accounts so you can allow TunesToTube to interface with your YouTube Channel



After you've connected your YouTube account, you will be sent back to TunesToTube where you can upload your MP3s to YouTube

# Question 1

“What are your aspirations  
for your course?”

## Question 2

“How does the course design support these aspirations?”



## Question 3

“What benefits have come from taking this approach?”

## Question 4

“Any other thoughts / reflections?”

# Interviewees:

Criteria

Preparations

Logistics

Examples

# CENTRAL SAINT MARTINS

[About CSM](#)
[Courses](#)
[News](#)
[What's On At CSM](#)
[CSM Public](#)
[People](#)
[CSM Research](#)
[Business and Innovation](#)

[← Previous](#)

In this section



## MA ARTS AND CULTURAL ENTERPRISE

MA Arts and Cultural Enterprise acknowledges the need for multi-skilled individuals who can both generate the ideas for original arts and cultural events, and provide leadership for the teams that realise them. The course is aimed at graduates with some work experience who wish to challenge themselves by developing innovative approaches to arts management and cultural production.

Two study routes are available, a two year part-time option, and a Flexible Learning option which is a unit-by-unit approach that allows candidates up to five years to complete. Both routes are low-residency and combine online learning and intensive face-to-face sessions.

This course is part of the: [Culture & Enterprise Programme](#).

### Open days:

[Wednesday 15 June, 6:30pm](#)

[Wednesday 20 July, 6:30pm](#)

[Wednesday 7 September, 6:30pm](#)

[Wednesday 28 September, 6:30pm](#)

### Any questions?

Please email the Course Leader, Charlotte Bonham-Carter, [✉](mailto:c.bonhamcarter@csm.arts.ac.uk)  
[c.bonhamcarter@csm.arts.ac.uk](mailto:c.bonhamcarter@csm.arts.ac.uk)

## Delivering a low residency post graduate course to international students

[Leave a reply](#)



[Direct link to podcast.](#)

In conversation with:

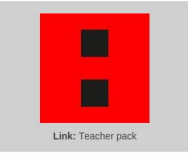
Tim Morgan, Learning Technologist

Teaching and learning themes: low residency; synchronous and asynchronous online learning; international collaboration

- Content
- General Course Resources
- Unit 1
- Unit 2
- Unit 3

- Programme
- Business and Management
- Culture and Enterprise

Teacher Pack



Live Classroom & schedule

**LONDON ONLINE SESSIONS:**

- Mon 13th June 18:15 - 19:45
- Wed 22th June 18:15 - 19:45

**HONG KONG ONLINE SESSIONS:**

- Mon 13th June 2:00 - 3:30 (BST)

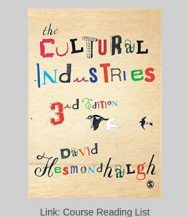
**RECORDED SESSION:**

- UNIT 1 recordings
- UNIT 2 recordings
- UNIT 3 recordings

**CALENDAR:**

- Google Calendar
- Schedule

MAACE course reading list



# 15/16 MA Arts and Cultural Enterprise - London

## General Course Resources



## Welcome to MA ACE

General Course Resources

### Unit 1



## Researching arts and cultural enterprise

Unit 1 Resources

### Unit 2



## Practice, Policy and Markets

Unit 2 Resources

### Unit 3



## Local and Global Challenges

Unit 3 Resources



[Direct link to podcast.](#)

In conversation with:

Georgia Steele, Programme Leader; Tim Meara Curriculum Co-ordinator  
Teaching and learning themes: research skills, reflective practice.

Course name, level – [Foundation](#)

College – Central Saint Martins

Student numbers – 600

Digital Space(s) used and discussed: [Workflow](#)

Key quotes: *“we quickly recognised the potential (of Workflow) as a space for critical practice and writing ...” “now pretty strong evidence to support more international students getting higher grades now because of the ways in which they are now working ...”*

Public work

Profile pages

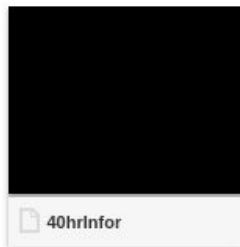
Skillshare

College

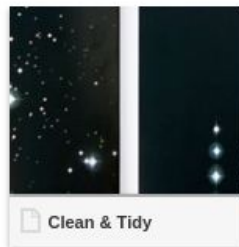
Course



t-shirts



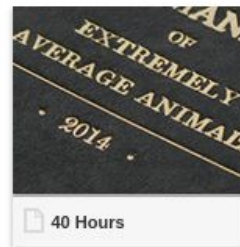
40hrInfor



Clean & Tidy



24 HOUR



40 Hours



Advertising



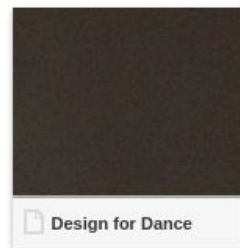
UNIT 3 Typography



Curation Project (1)



unit 7 pics



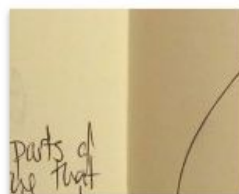
Design for Dance



Exhibition Week 1...



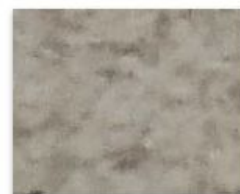
Album Covers



UNIT 2



U3\_Block\_1 Typog...



FINAL WORKS FOR I...



# LONDON COLLEGE OF COMMUNICATION

[About LCC](#) [Courses](#) [News](#) [Events](#) [People](#) [LCC Research](#) [Business & Innovation](#)

[← Previous](#)

In this section



## BA (HONS) PHOTOGRAPHY

### PLACES AVAILABLE 2016/17

This course has places available. View the [How to apply section](#) on this page for more details. For a full list of UAL courses open for 2016/17 entry, including others available at London College of Communication, visit the [Places available](#) page.

BA (Hons) Photography at LCC is a rigorous and robust programme which takes a conceptual approach to the study of photography. This involves researching and studying photography theoretically, as well as practically, and it's this combination which enables students to produce a conceptually strong practice and increasingly find their own voice within it.

### Open Days

The next Open Day for this course will be held on **Saturday 4 June** at London College of Communication. [Book your place now](#)

## Developing Research Skills

[Leave a reply](#)



[Direct link to podcast.](#)

In conversation with:

Matthew Hawkins, Senior Lecturer

Teaching and learning theme - Developing research skills.

Course name, level - [BA \(Hons\) Photography](#)

College - LCC

Student numbers - 278

Digital space(s) used and discussed - [Workflow](#)

Key quotes: *"The practice of uploading research and experimentation into Workflow by individual students enabling them to share it in tutorial groups with their peer group has been exciting in a way of promoting peer learning, debate and discussion about individuals' ideas ... "*

## Sharing and showcasing work

[Leave a reply](#)



[Direct link to podcast.](#)

In conversation with:

Sarah Day, Acting Course Leader

Teaching and learning themes: sharing and showcasing work, including securely with industry partners.

Course – [BA \(Hons\) Footwear](#)

College – London College of Fashion (LCF) Cordwainers

Student numbers – 155

Digital space(s) used and discussed – [Workflow](#)

Key quotes: *“When you’re working with an industry partner it’s very difficult for them to come to the college on a regular basis and provide feedback to students – to have a live link that they can login to, see the work and keep up to speed with what the students are doing is endlessly useful”*

# Discoveries / Themes

Importance of eStudio / ePortfolio within our context  
Critical Reflection / Research / Collaboration  
Determining potential for 'pure online' courses

More to come ...

# Links

[Blog](#)

[Soundcloud](#)